

HJC

HIGHER VALUES



Chadwick Place

Surbiton, KT6 5RZ

Guide Price £950,000

A four bedroom terraced town house situated on the highly regarded and much sought after St James Park development. This super town house offers versatile and generously proportioned living space. The accommodation includes a good sized lounge, well appointed kitchen/diner with doors opening onto the garden, main bedroom with ensuite, guest bedroom with ensuite, two further bedrooms and a family bathroom. The property also benefits off street parking, garage and easy access to the town centre and station. Chain free. Council Tax Band F.

Material Info: Water / Electricity / Sewerage: Mains. Heating: Gas Mains. Broadband: Fibre (FTTC). Mobile Coverage: Indoor: Likely Outdoor: Likely.

- Prestigious St James development
- Kitchen/Dining Room
- Four Bedrooms
- Family Bathroom
- Off Street Parking
- Terraced Town House
- Living Room
- En-suites to both Double Bedrooms
- Close To Surbiton Station
- No Onward Chain

Floor Plan

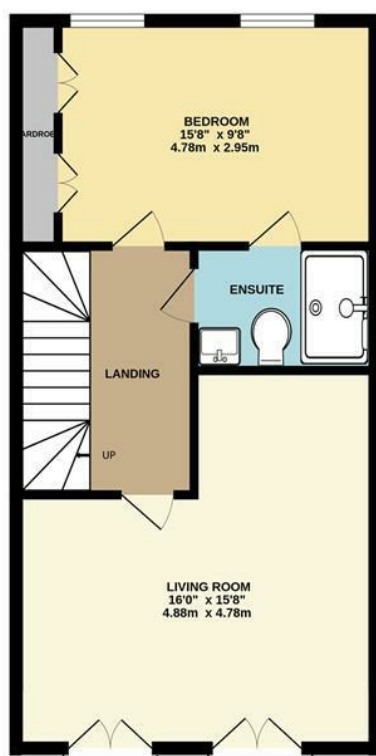


GROUND FLOOR

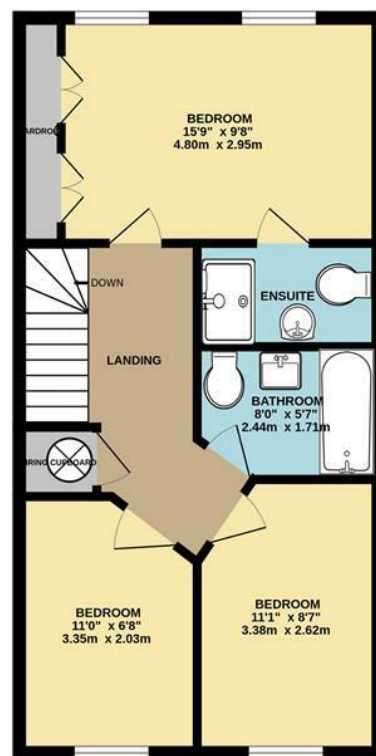


CHADWICK PLACE, LONG DITTON
INTERNAL FLOOR AREA
(APPROX.) 1475 sq ft/ 137.0 sq m

Whilst every attempt has been made to ensure the accuracy of this floor plan, measurement of doors, windows, rooms and any other items are approximate and no responsibility is taken for any error, omission or mis-statement.
Made with Metropix © 2024.

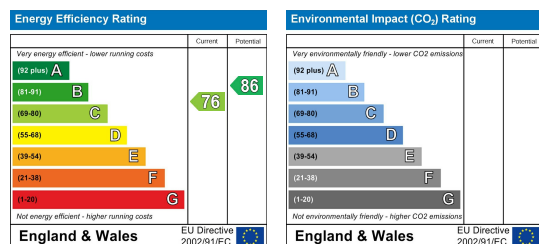


FIRST FLOOR



SECOND FLOOR

Energy Efficiency Graph



These particulars, whilst believed to be accurate are set out as a general outline only for guidance and do not constitute any part of an offer or contract. Intending purchasers should not rely on them as statements of representation of fact, but must satisfy themselves by inspection or otherwise as to their accuracy. No person in this firm's employment has the authority to make or give any representation or warranty in respect of the property.