

HJC

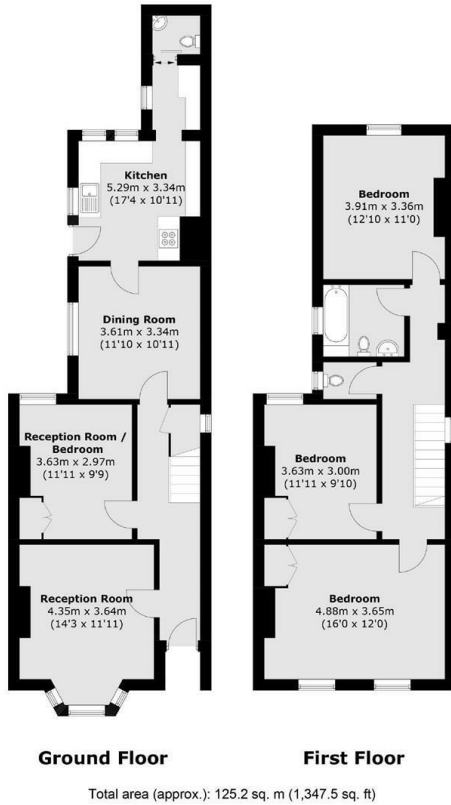
HIGHER VALUES



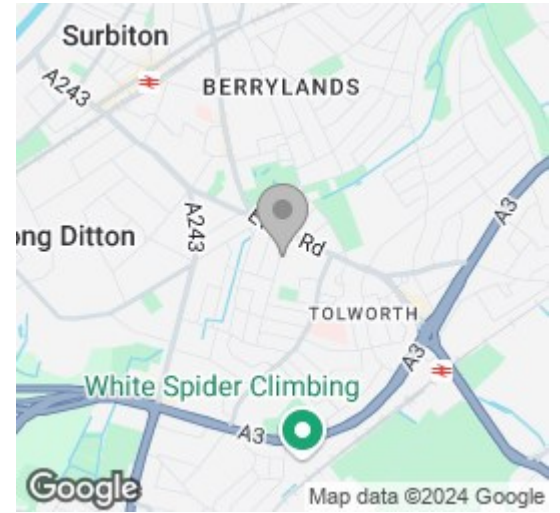
28 Douglas Road
, Surbiton, KT6 7SA
£2,995 Per Month



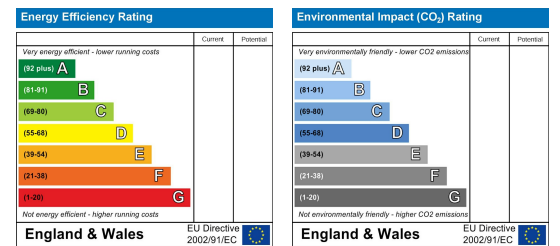
Floor Plan



Area Map



Energy Efficiency Graph



Viewing

Please contact our HJC Surbiton Office on 020 8390 0404 if you wish to arrange a viewing appointment for this property or require further information.

- Detached family home
- Versatile living space
- Double glazing
- Council tax band F
- Off-street parking to rear
- Modern kitchen with door on to garden
- Character property
- 3/4 double bedrooms



Detached family home in a lovely location. The property comprises: living room, dining room, kitchen with door on to garden, downstairs cloakroom and an additional reception room which could be utilised as an office or a 4th bedroom. Upstairs, there are 2 large doubles, and further double bedroom, full bathroom suite and an additional loo. This charming property also benefits from off-street parking for 2 cars to the rear, and new double glazed windows throughout. Available mid October, unfurnished.



These particulars, whilst believed to be accurate are set out as a general outline only for guidance and do not constitute any part of an offer or contract. Intending purchasers should not rely on them as statements of representation of fact, but must satisfy themselves by inspection or otherwise as to their accuracy. No person in this firm's employment has the authority to make or give any representation or warranty in respect of the property.