

HJC

HIGHER VALUES



Langley Avenue

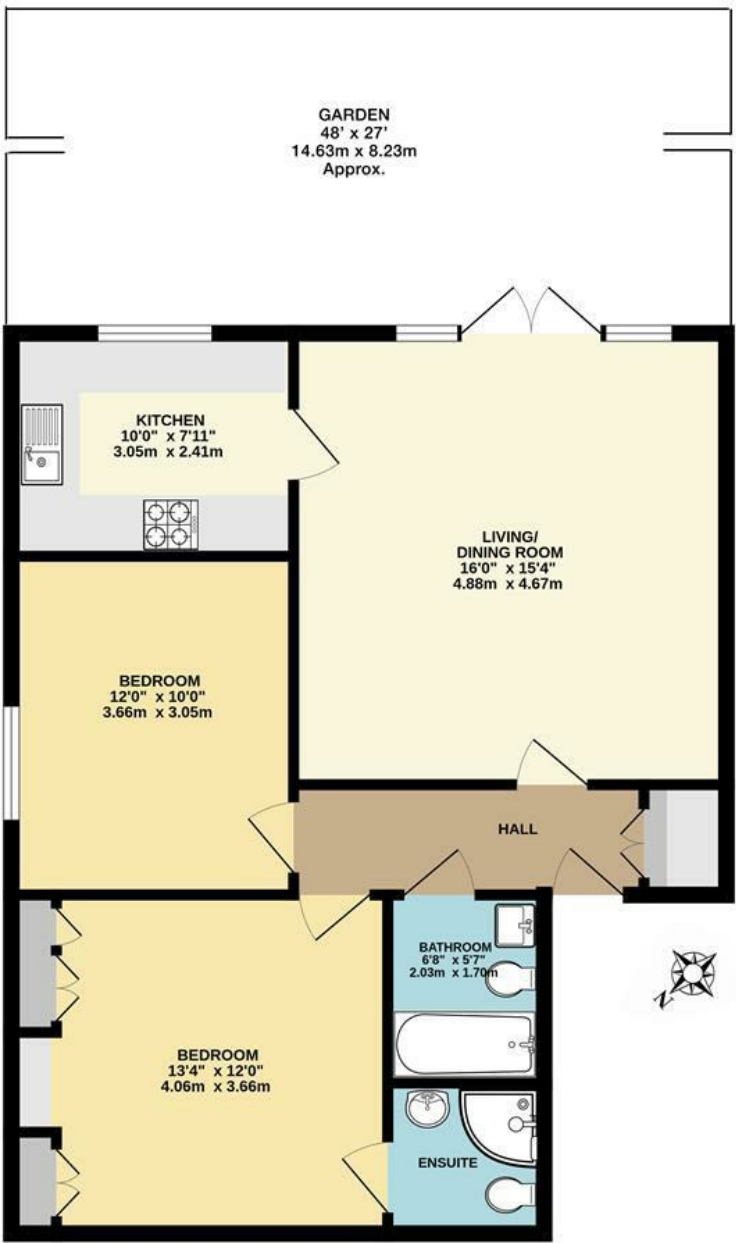
Surbiton, KT6 6QL

Guide Price £625,000

A unique opportunity to acquire a modern purpose-built apartment within the Southborough conservation area of Surbiton, within proximity of the town centre. This ground floor apartment has been finished to the highest quality by the current owners. The accommodation comprises a main bedroom with custom fitted wardrobes and refitted ensuite, second double bedroom, family bathroom, separate kitchen with granite work surfaces and spacious living room with Amitco flooring and direct access to the south facing private rear garden with Trex composite decking area. Further benefits include underfloor heating, an allocated parking space and a share of the freehold. Council Tax D.

- Ground Floor Garden Flat
- Living Room with French Doors Opening onto the Private Garden
- Main Bedroom with Ensuite
- Family Bathroom
- Close to Surbiton Station
- Entry Door System
- Refitted Kitchen
- Second Double Bedroom
- Allocated Parking Space
- Close to The River Thames and Surbiton High Street

Floor Plan

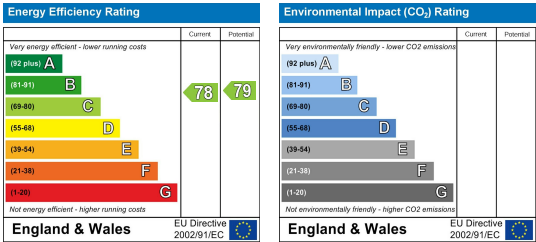


GROUND FLOOR GARDEN FLAT

Whilst every attempt has been made to ensure the accuracy of this floor plan, measurement of doors, windows, rooms and any other items are approximate and no responsibility is taken for any error, omission or mis-statement. Made with Metropix © 2024.

LANGLEY AVENUE, SURBITON
INTERNAL FLOOR AREA (APPROX.) 745 sq ft/ 69 sq m

Energy Efficiency Graph



These particulars, whilst believed to be accurate are set out as a general outline only for guidance and do not constitute any part of an offer or contract. Intending purchasers should not rely on them as statements of representation of fact, but must satisfy themselves by inspection or otherwise as to their accuracy. No person in this firms employment has the authority to make or give any representation or warranty in respect of the property.