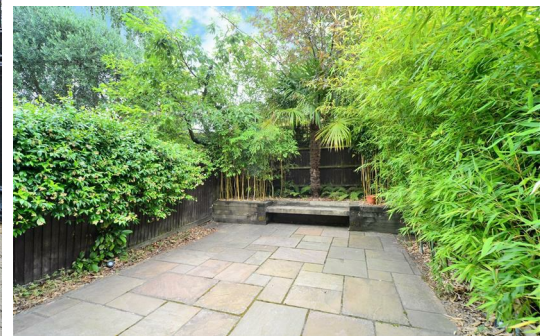


HJC

HIGHER VALUES



Williams Grove

Surbiton, KT6 5RW

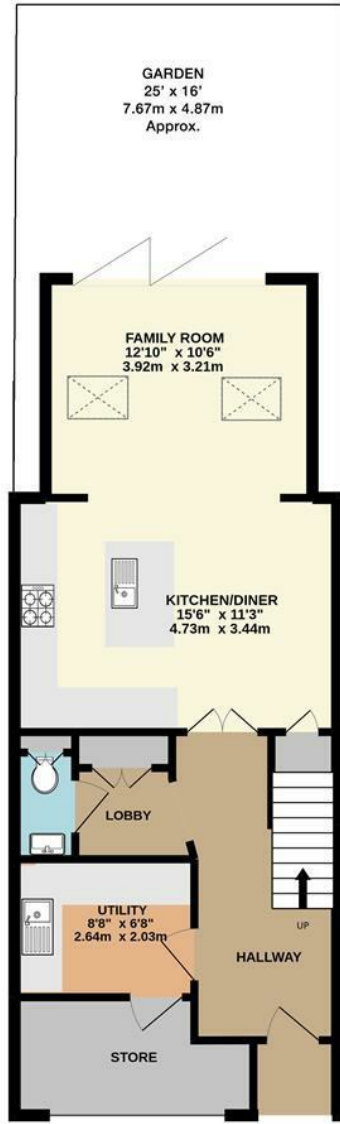
Guide Price

£1,100,000

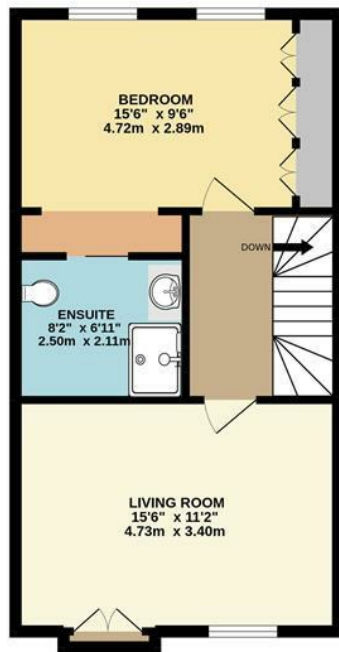
Set on the prestigious St James Development is this stunning mid terrace town house. The accommodation on the ground floor includes a large entrance hall, excellent utility room leading into further storage from a converted garage, downstairs cloakroom, with additional storage. The large kitchen/dining area flows through to open plan family area with bi-fold doors opening out onto the garden. To the first level features a large double bedroom, fitted wardrobes and En-suite, living room with French doors onto a Juliette balcony. To the second level is the main bedroom with En-suite, two further bedrooms and family bathroom. This truly is a lovely family home, that has been renovated to a very high standard, all within walking distance to Surbiton Station, River Thames, Nuffield Gym and parks. Council Tax Band F.

- Prestigious St James development
- Open Plan Dining Room
- Large Utility
- Two Further Bedrooms
- Off Street Parking
- Spacious Kitchen/dining room
- Downstairs cloakroom
- Two Double Bedrooms with En-Suites
- Family Bathroom
- No Onward Chain

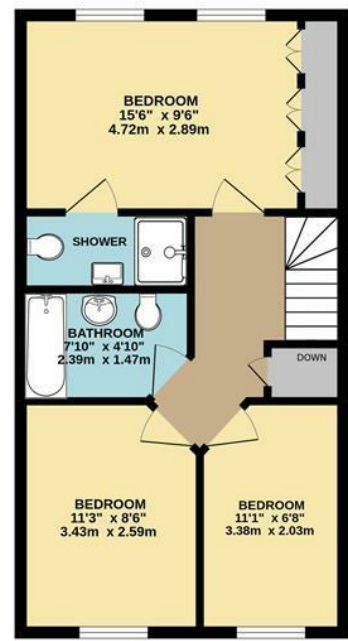
Floor Plan



GROUND FLOOR



FIRST FLOOR



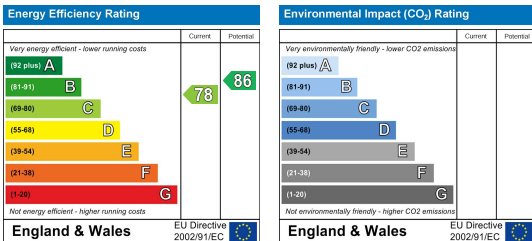
SECOND FLOOR

WILLIAMS GROVE, LONG DITTON INTERNAL FLOOR AREA (APPROX.) 1540 sq ft/ 143.07 sq m

Whilst every attempt has been made to ensure the accuracy of this floor plan, measurement of doors, windows, rooms and any other items are approximate and no responsibility is taken for any error, omission or mis-statement. Made with Metropix © 2022.



Energy Efficiency Graph



These particulars, whilst believed to be accurate are set out as a general outline only for guidance and do not constitute any part of an offer or contract. Intending purchasers should not rely on them as statements of representation of fact, but must satisfy themselves by inspection or otherwise as to their accuracy. No person in this firm's employment has the authority to make or give any representation or warranty in respect of the property.