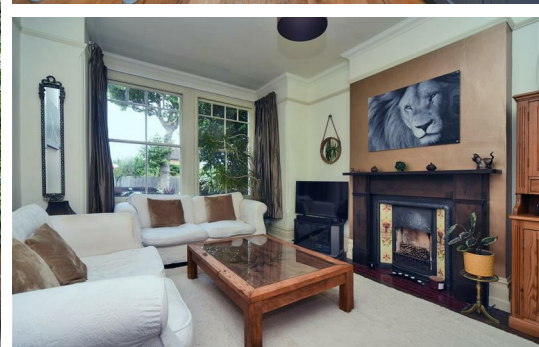


# HJC

HIGHER VALUES



## Balaclava Road

Surbiton, KT6 5PN

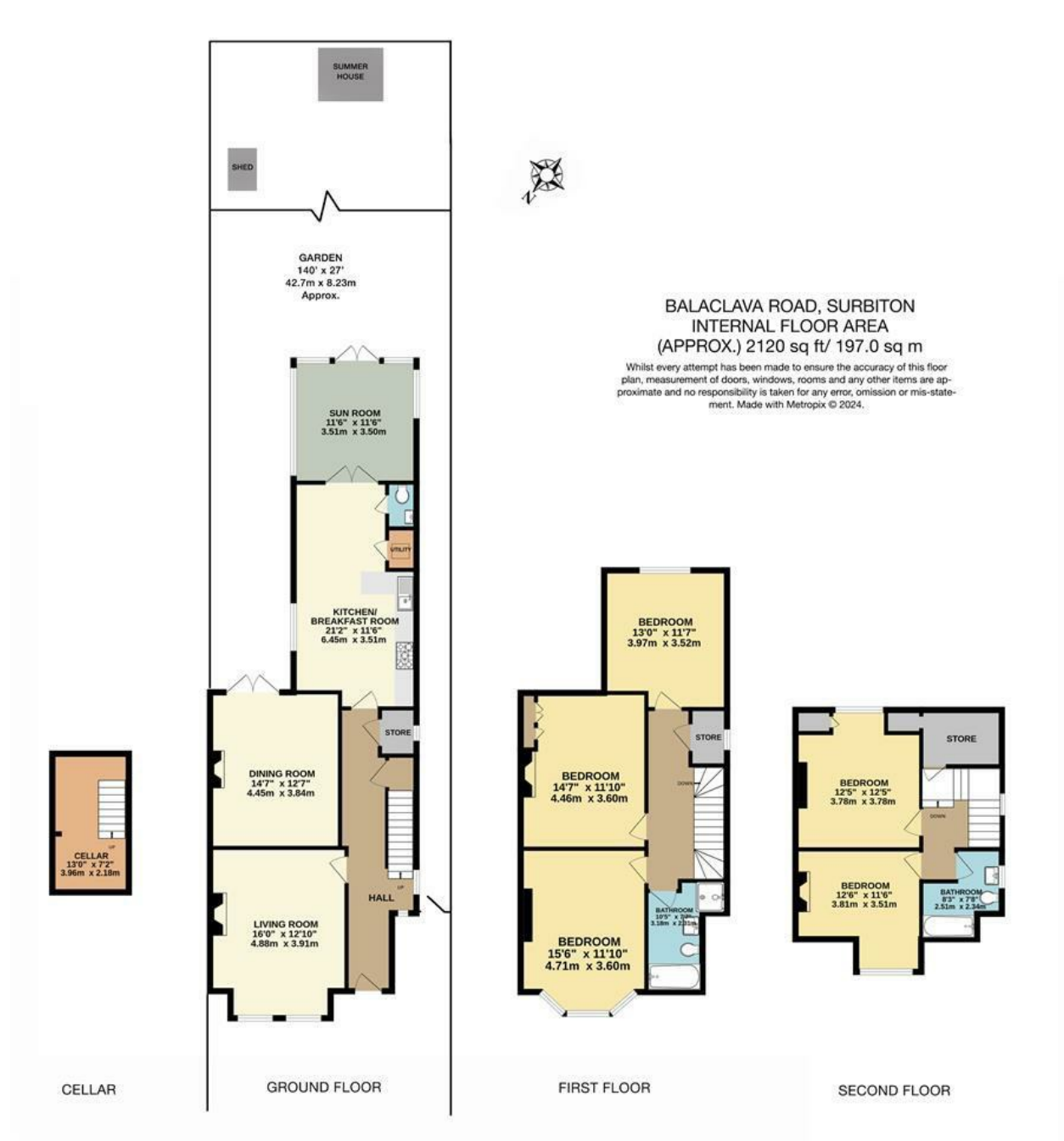
Guide Price

£1,500,000

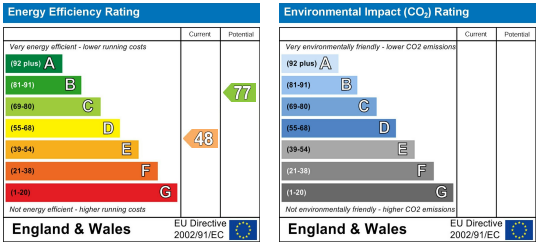
A beautifully presented and imposing semi-detached five bedroom character home situated on a popular and well-regarded residential road. The property enjoys flexible accommodation and well proportioned living space. Further benefits include a larger than usual secluded rear garden and off-street parking. The property is located close to Surbiton's town centre, mainline station and the River Thames. Council Tax band G.

- Victorian Family Home with a Wealth of Character
- Stunning Bespoke Shaker Style Kitchen
- Two Bathrooms and Downstairs WC
- Beautiful Timber Framed Conservatory with Stained Glass Panels
- Close to Surbiton Station
- Two Reception Rooms with Feature Fireplace
- Five Double Bedrooms
- Stunning Mature Rear Garden
- Off Street Parking
- Close to Local amenities and the River Thames

Floor Plan



Energy Efficiency Graph



These particulars, whilst believed to be accurate are set out as a general outline only for guidance and do not constitute any part of an offer or contract. Intending purchasers should not rely on them as statements of representation of fact, but must satisfy themselves by inspection or otherwise as to their accuracy. No person in this firms employment has the authority to make or give any representation or warranty in respect of the property.