

HJC

HIGHER VALUES



Tolworth Road

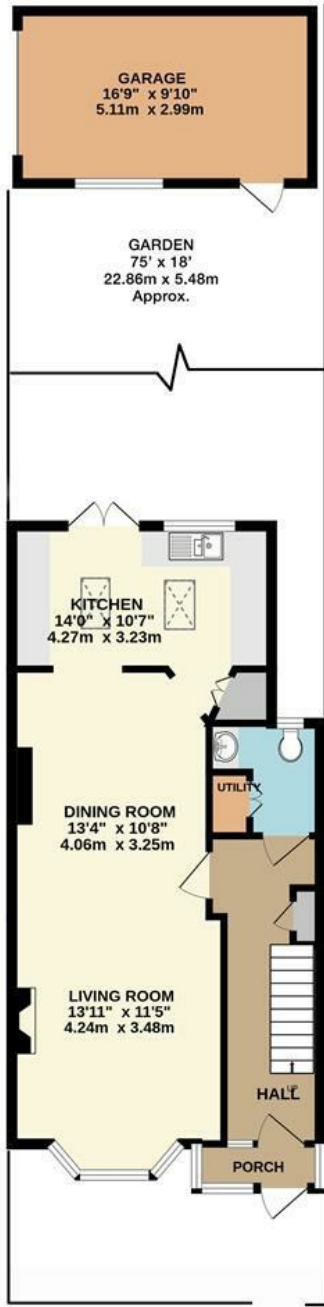
Surbiton, KT6 7SZ

Guide Price £675,000

This beautifully renovated 2 double bedroom character terraced house is a stunning blend of classic charm and modern convenience. Open plan living and dining room fitted with an elegant log burner. The space flows into a newly fitted kitchen with French doors opening on to the rear garden. Also, a benefit on the ground floor is the downstairs cloak room which doubles as a utility room, providing practicality without compromising on style. Beautifully fitted upstairs shower room. The heart of this home extends outdoors to a lovely garden, enhanced by its thoughtful landscaping. Located close to local transport connections and amenities. Council Tax Band D.

- Stunning Terraced Home
- Refitted Kitchen
- 2 Double Bedrooms
- Upstairs Shower Room
- Garage and 2 Storage Sheds
- Tastefully Renovated
- Open Plan Living/Dining Room with Log Burner
- Downstairs WC/Utility Room
- Lovely Private garden with Entertaining Area
- Close proximity to local transport connections and amenities

Floor Plan

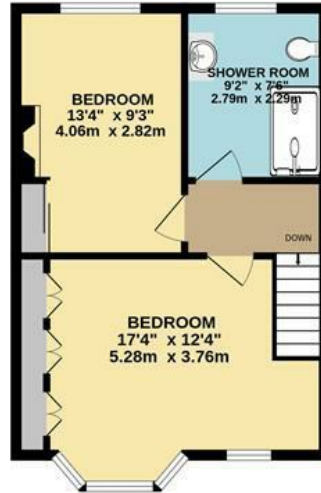


GROUND FLOOR

TOLWORTH ROAD, SURBITON
INTERNAL FLOOR AREA
(APPROX.) 968 sq ft/ 90.0 sq m

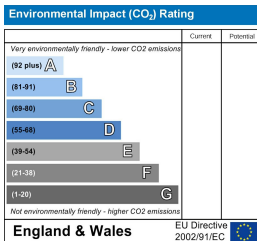
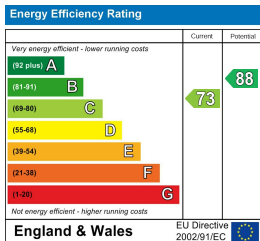
GARAGE 160 sq ft/ 14.86 sq m

Whilst every attempt has been made to ensure the accuracy of this floor plan, measurement of doors, windows, rooms and any other items are approximate and no responsibility is taken for any error, omission or mis-statement.
Made with Metropix © 2024.



FIRST FLOOR

Energy Efficiency Graph



These particulars, whilst believed to be accurate are set out as a general outline only for guidance and do not constitute any part of an offer or contract. Intending purchasers should not rely on them as statements of representation of fact, but must satisfy themselves by inspection or otherwise as to their accuracy. No person in this firm's employment has the authority to make or give any representation or warranty in respect of the property.