



HIGHER VALUES



Chadwick Place

Surbiton, KT6 5RZ

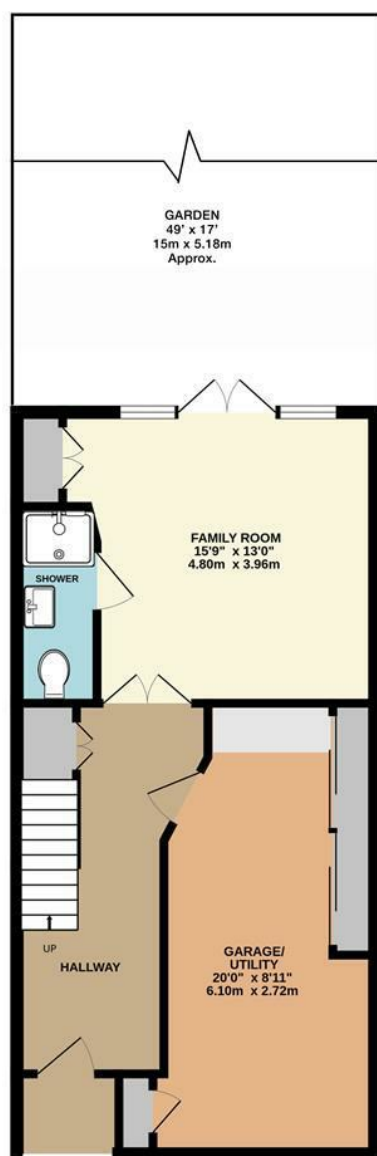
Guide Price

£1,000,000

Set on the prestigious St James development, we are delighted to offer this wonderful 4 bedroom terrace townhouse. The ground floor welcomes you with a generously sized reception room, currently configured as a home office but versatile enough to serve as a bedroom. French doors open onto the pretty rear garden, inviting natural light and fresh air. A convenient shower room and an integral garage complete the ground floor. Ascending to the first floor, you'll discover a well-appointed contemporary kitchen/breakfast room and generous living room/dining room great for entertaining. On the second floor is the main bedroom boasting fitted wardrobes and an en-suite shower room. Two additional bedrooms and a family bathroom complete the upper level. Close to Surbiton Station, Town and Parks. Council Tax Band F.

- Prestigious St James development
- Downstairs Shower room
- Family Bathroom
- Integral Garage
- No Onward Chain
- 4 Bedrooms
- En-suite to Main Bedroom
- Spacious Contemporary Kitchen
- Off Street Parking
- Close to Surbiton Station and River Thames

Floor Plan

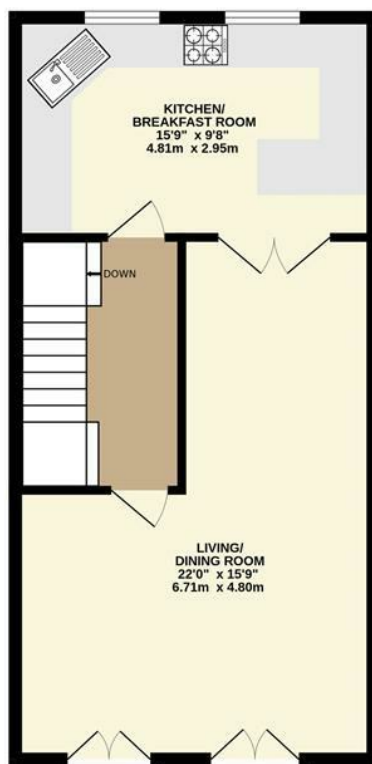


GROUND FLOOR

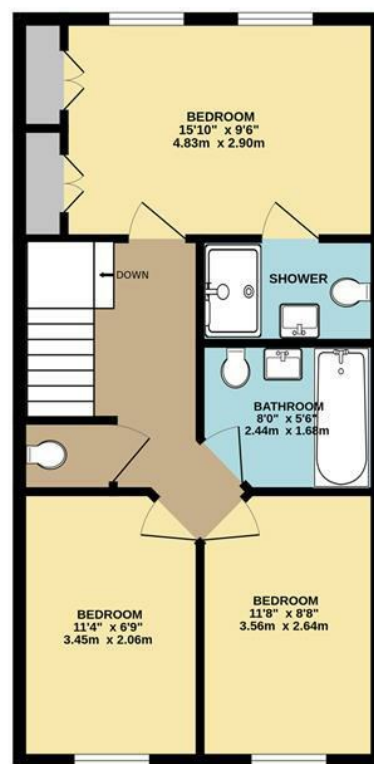


CHADWICK PLACE, LONG DITTON
INTERNAL FLOOR AREA
(APPROX.) 1530 sq ft/ 142.1 sq m

Whilst every attempt has been made to ensure the accuracy of this floor plan, measurement of doors, windows, rooms and any other items are approximate and no responsibility is taken for any error, omission or mis-statement.
Made with Metropix © 2024.

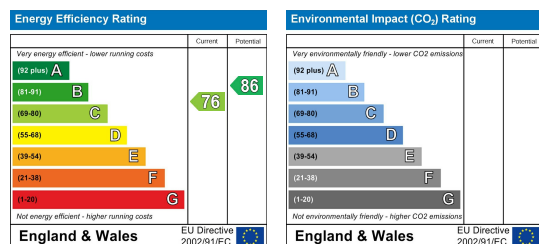


FIRST FLOOR



SECOND FLOOR

Energy Efficiency Graph



These particulars, whilst believed to be accurate are set out as a general outline only for guidance and do not constitute any part of an offer or contract. Intending purchasers should not rely on them as statements of representation of fact, but must satisfy themselves by inspection or otherwise as to their accuracy. No person in this firm's employment has the authority to make or give any representation or warranty in respect of the property.