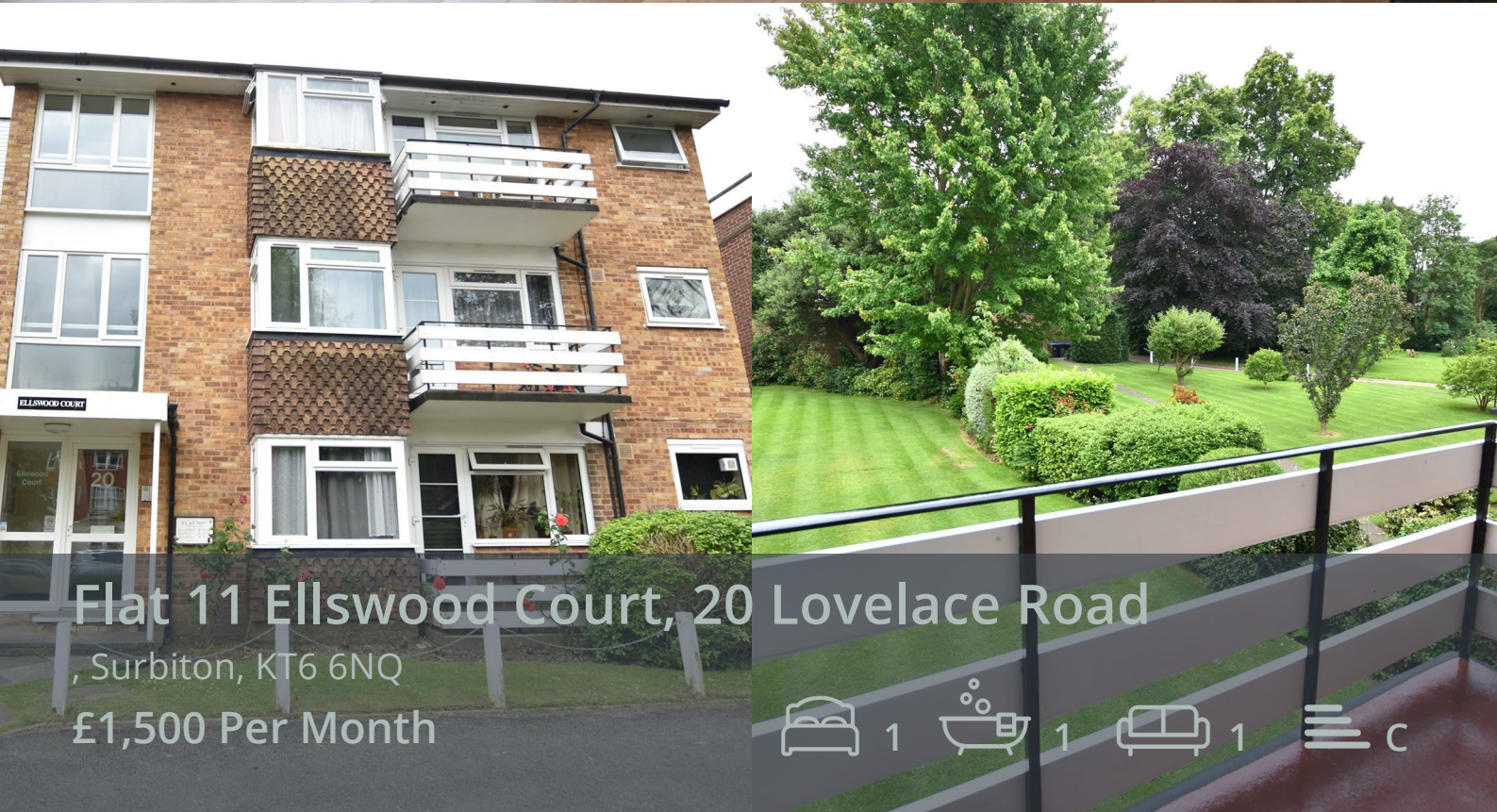


HJC

HIGHER VALUES



Flat 11 Ellswood Court, 20 Lovelace Road

, Surbiton, KT6 6NQ

£1,500 Per Month

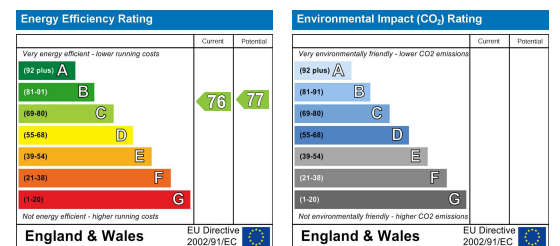


Floor Plan

Area Map



Energy Efficiency Graph



Viewing

Please contact our HJC Surbiton Office on 020 8390 0404 if you wish to arrange a viewing appointment for this property or require further information.

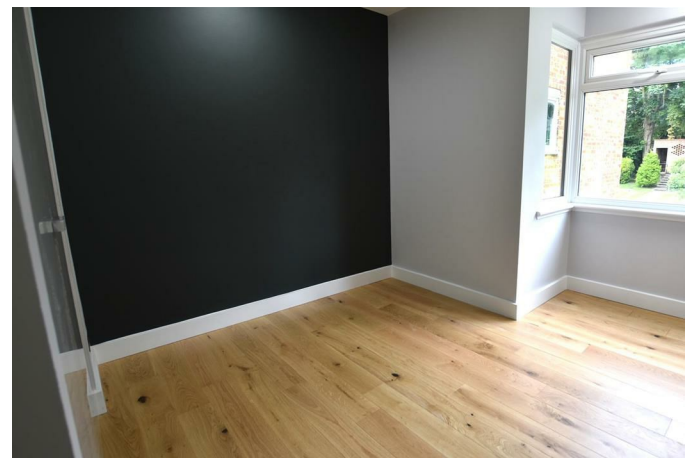
- FULLY REFURBISHED ▪ Top specification kitchen APARTMENT
- Luxury shower room ▪ Balcony and communal gardens
- Master bedroom with fitted wardrobe ▪ Available NOW
- Council tax band C



This refurbished one-bedroom apartment is a gem waiting to be discovered. The luxury fitted bathroom and kitchen add a touch of elegance to this property, making it a perfect blend of style and comfort.

Situated in a great location on Lovelace Road, this apartment offers convenience and easy access to all amenities. With 1 reception room, 1 bedroom, and 1 bathroom, this apartment is ideal for a single professional or a couple looking for a space to call their own.

Available unfurnished by the end of June. Contact us now to arrange a viewing and make this apartment your new sanctuary in Surbiton!



These particulars, whilst believed to be accurate are set out as a general outline only for guidance and do not constitute any part of an offer or contract. Intending purchasers should not rely on them as statements of representation of fact, but must satisfy themselves by inspection or otherwise as to their accuracy. No person in this firm's employment has the authority to make or give any representation or warranty in respect of the property.