

HJC

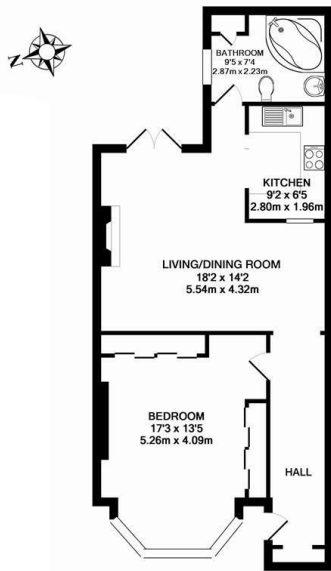
HIGHER VALUES



1, 40 Maple Road
, Surbiton, KT6 4AB
£1,550 Per Calendar Month

1 1 1 D

Floor Plan



LOWER GROUND GARDEN FLAT

INTERNAL FLOOR AREA (APPROX.) 665 sq ft/ 61.4 sq m

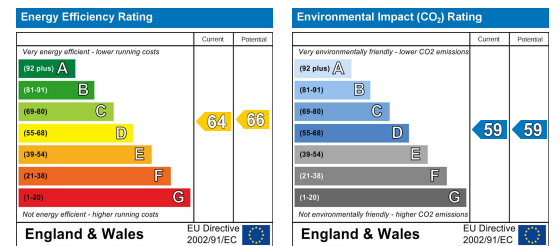
Garden extends to 50' (15.24m) approximately

Whilst every attempt has been made to ensure the accuracy of this floor plan, measurement of doors, windows, rooms and any other items are approximate and no responsibility is taken for any error, omission or mis-statement. Made with Metropix © 2016.

Area Map



Energy Efficiency Graph



Viewing

Please contact our HJC Surbiton Office on 020 8390 0404 if you wish to arrange a viewing appointment for this property or require further information.

- Beautiful basement ▪ Large private garden apartment
- Brand new bathroom ▪ Fully re-painted
- Big bedroom with storage ▪ Semi-open plan
- Sought after Maple Road ▪ Council tax band C location!

COMING SOON! Offered to let is this beautiful, larger than average one bedroom Conversion apartment in this highly sought after tree lined location in Surbiton. The apartment has a private rear garden accessed from the reception, generous bedroom, semi-open plan kitchen and brand new bathroom suite. Within a short walk to the station and shops. Viewings Sat 15th June! Available 22nd June!

These particulars, whilst believed to be accurate are set out as a general outline only for guidance and do not constitute any part of an offer or contract. Intending purchasers should not rely on them as statements of representation of fact, but must satisfy themselves by inspection or otherwise as to their accuracy. No person in this firm's employment has the authority to make or give any representation or warranty in respect of the property.