

# HJC

HIGHER VALUES



## Williams Grove

Surbiton, KT6 5RP

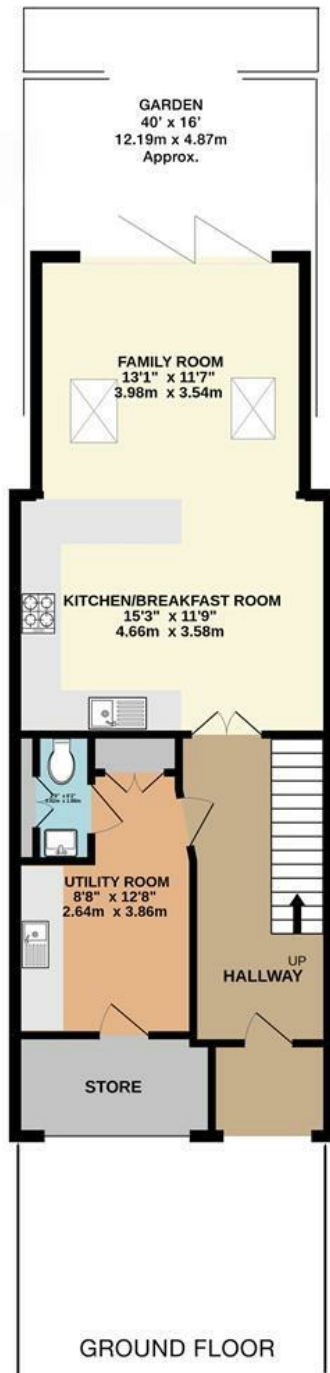
Guide Price

£1,050,000

This delightful and spacious town house, situated in a quiet cul-de-sac in the sought-after St James Development, features a fabulous open plan kitchen/breakfast family room. The bi-fold doors open onto the garden with a southerly aspect, allowing natural light to flood in. This space is perfect for family gatherings and entertaining. Additional features include a beautiful first floor reception room, utility room, downstairs wc and storage space, providing practicality and versatility. The property offers multiple bedrooms: a main bedroom with an en-suite, a second double bedroom also with an en-suite, and two further bedrooms. Also, a well-appointed family bathroom on the top floor. Heating options include gas central heating and underfloor heating on the ground floor, ensuring comfort throughout this home. The property also benefits from a private driveway, providing convenient parking right at your doorstep. Located within walking distance to the Nuffield Gym, River Thames, and Surbiton Station. Council Tax Band F.

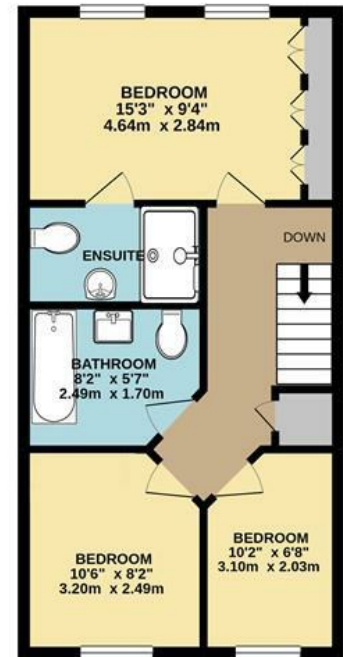
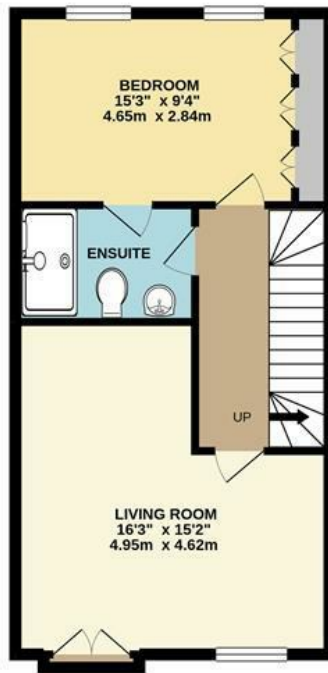
- Prestigious St James development
- Stunning kitchen/breakfast/family room
- En-suites to both Double Bedrooms
- Utility room
- Close To Surbiton Station
- Extended terrace town house
- Four bedrooms
- Family bathroom
- Garden with Southerly Aspect
- Off street parking

# Floor Plan

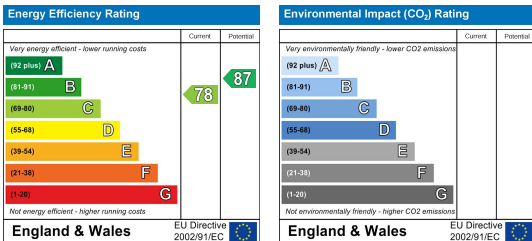


## WILLIAMS GROVE, LONG DITTON INTERNAL FLOOR AREA (APPROX.) 1590 sq ft/ 147.72sq m

Whilst every attempt has been made to ensure the accuracy of this floor plan, measurement of doors, windows, rooms and any other items are approximate and no responsibility is taken for any error, omission or mis-statement.  
Made with Metropix © 2024.



# Energy Efficiency Graph



These particulars, whilst believed to be accurate are set out as a general outline only for guidance and do not constitute any part of an offer or contract. Intending purchasers should not rely on them as statements of representation of fact, but must satisfy themselves by inspection or otherwise as to their accuracy. No person in this firm's employment has the authority to make or give any representation or warranty in respect of the property.