

# HJC

HIGHER VALUES



## Pound Close

Surbiton, KT6 5JW

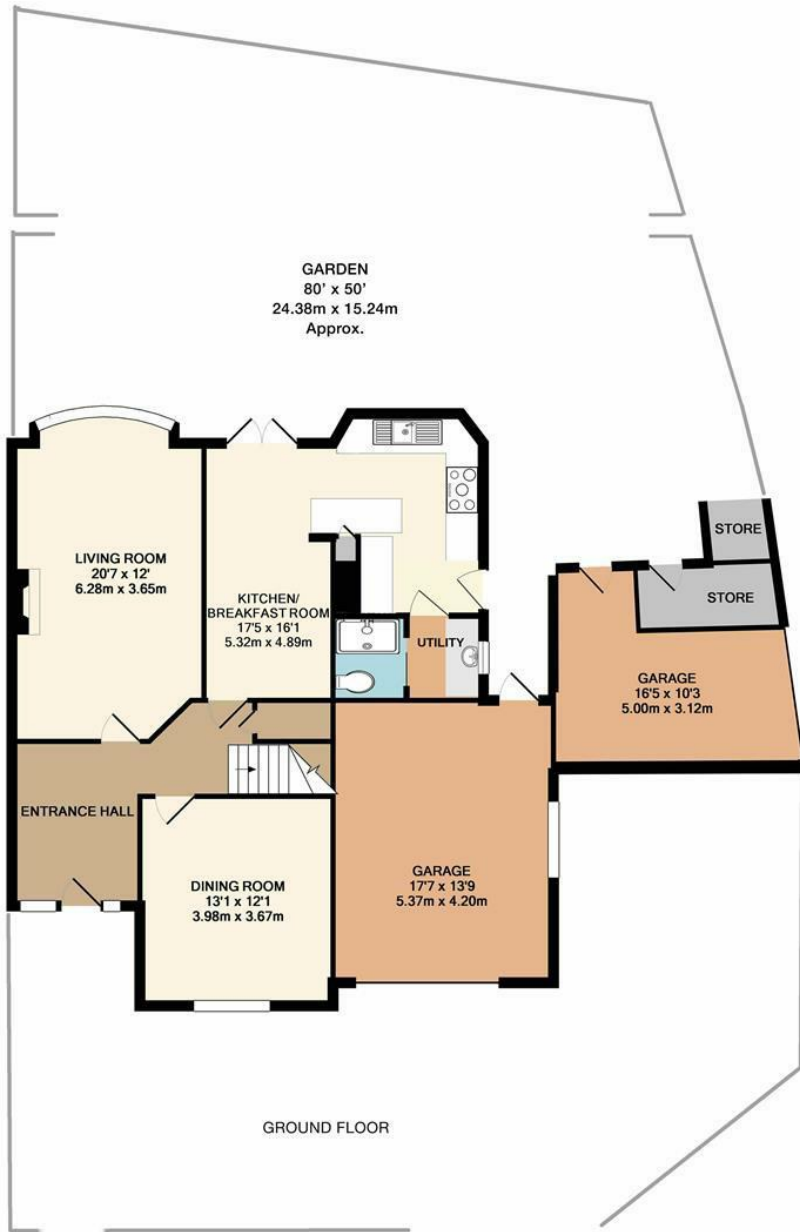
Guide Price

£1,225,000

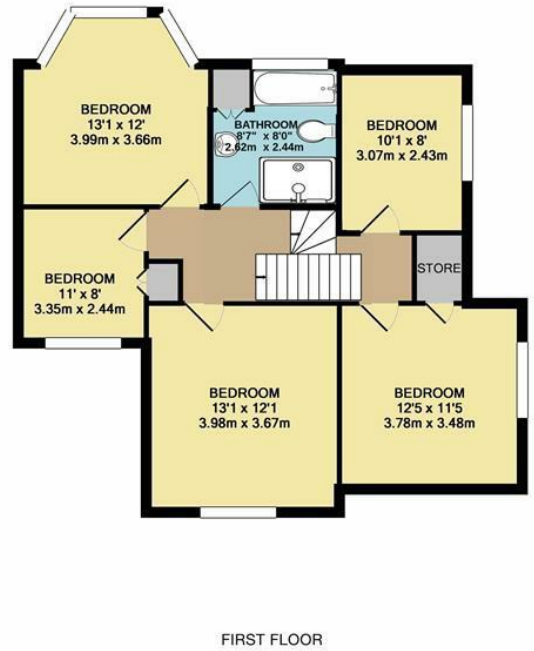
An attractive and spacious well-presented five bedroom halls-adjointing semi-detached family home situated on a large corner plot in a popular and well regarded residential location. This charming home enjoys well-proportioned living space with generous room sizes and period features. There is a lovely westerly facing garden, osp for 2 cars, integral garage and a detached garage. The property is situated in a cul-de-sac close to local shops and 3/4 of a mile from Surbiton town centre and mainline station. Council tax band F.

- Extended semi-detached family home
- 2 Reception rooms
- 3/4 mile to Surbiton station
- Westerly facing garden
- Two garages and osp
- Five bedrooms
- Utility area
- Very well presented situated on a large corner plot
- Kitchen/breakfast room
- No onward chain

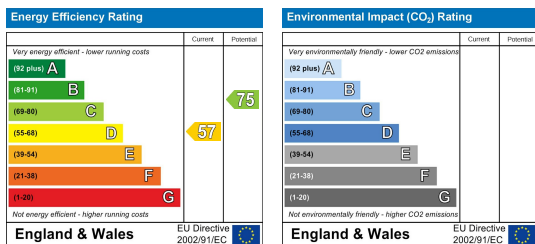
# Floor Plan



POUND CLOSE, SURBITON  
INTERNAL FLOOR AREA (APPROX.)  
2060 sq ft/ 191.4 sq m



## Energy Efficiency Graph



These particulars, whilst believed to be accurate are set out as a general outline only for guidance and do not constitute any part of an offer or contract. Intending purchasers should not rely on them as statements of representation of fact, but must satisfy themselves by inspection or otherwise as to their accuracy. No person in this firm's employment has the authority to make or give any representation or warranty in respect of the property.