

# HJC

HIGHER VALUES



## Hastings Drive

Surbiton, KT6 5NX

Guide Price £775,000

A charming semi-detached house located in a sought-after area of Surbiton close to the station and local amenities. This delightful property is beautifully presented and boasts a modern fitted kitchen and reception room with conservatory providing a large family space, two bedrooms and a modern bathroom. Situated in a peaceful neighbourhood, the property offers a pretty sunny garden to relax and unwind in. There is allocated parking for one vehicle along with a garage. Council Tax Band E.

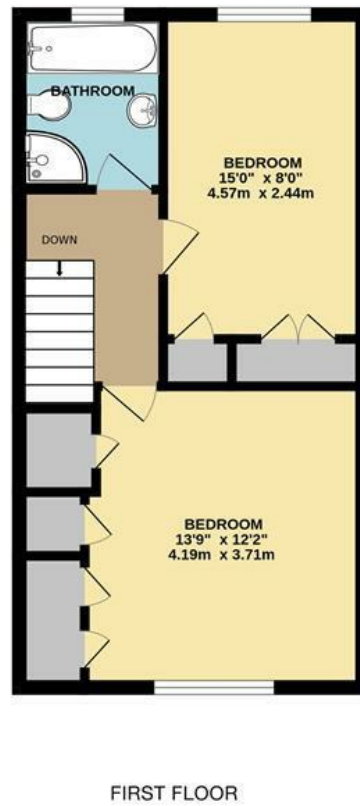
- Close to Surbiton Station
- Large Reception Room
- Modern Fitted Kitchen
- Downstairs Cloakroom
- Cul-de-Sac location
- 2 Double Bedrooms
- Conservatory
- Off street parking and garage
- Garden with side access
- Close to local Schools, River Thames & Kingston

# Floor Plan

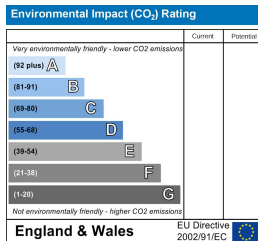
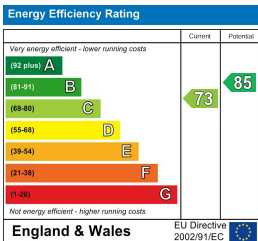


## HASTINGS DRIVE, SURBITON INTERNAL FLOOR AREA (APPROX.) 872 sq ft/ 81.0 sq m

Whilst every attempt has been made to ensure the accuracy of this floor plan, measurement of doors, windows, rooms and any other items are approximate and no responsibility is taken for any error, omission or mis-statement. Made with Metropix © 2022.



## Energy Efficiency Graph



These particulars, whilst believed to be accurate are set out as a general outline only for guidance and do not constitute any part of an offer or contract. Intending purchasers should not rely on them as statements of representation of fact, but must satisfy themselves by inspection or otherwise as to their accuracy. No person in this firm's employment has the authority to make or give any representation or warranty in respect of the property.