

HJC

HIGHER VALUES



Grove Road

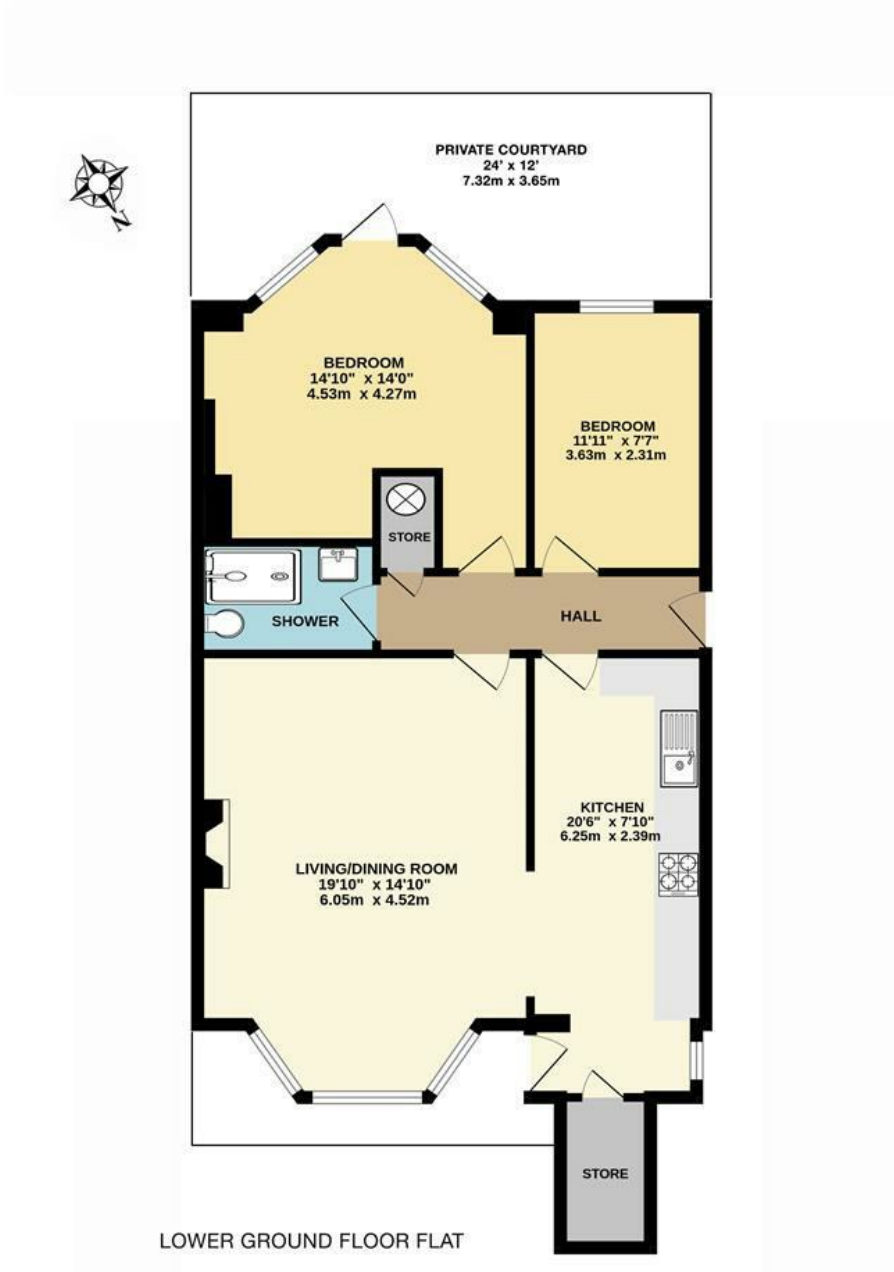
Surbiton, KT6 4DW

This exceptional apartment, set within an attractive character conversion, offers a delightful living experience. The property boasts a spacious reception room, a well-equipped fitted kitchen, and two fantastic bedrooms. The high ceilings add to the sense of space, and the apartment also comes with the added benefit of a private allocated parking space and garden area. Its prime location ensures easy access to the popular Farmer's Market, charming bars and restaurants on Maple Road, and the convenient Surbiton mainline station. Council Tax Band D.

- Character Conversion Flat
- Spacious Living Room with Bay Window
- River Road Location
- Private Garden area and Allocated Parking
- 2 Double Bedrooms
- Separate Kitchen
- Close to Surbiton Station
- Share of Freehold

Guide Price £500,000

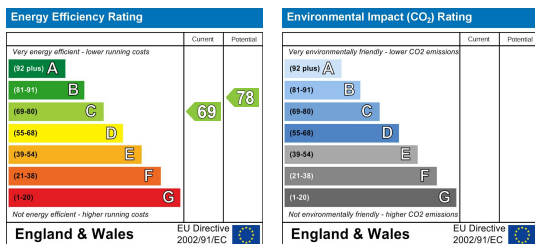
Floor Plan



GROVE ROAD, SURBITON
INTERNAL FLOOR AREA (APPROX.) 825 sq ft/ 76.6 sq m

Whilst every attempt has been made to ensure the accuracy of this floor plan, measurement of doors, windows, rooms and any other items are approximate and no responsibility is taken for any error, omission or mis-statement. Made with Metropix © 2024.

Energy Efficiency Graph



These particulars, whilst believed to be accurate are set out as a general outline only for guidance and do not constitute any part of an offer or contract. Intending purchasers should not rely on them as statements of representation of fact, but must satisfy themselves by inspection or otherwise as to their accuracy. No person in this firm's employment has the authority to make or give any representation or warranty in respect of the property.