

first for homes

first for property in life - firstforhomes.co.uk

Contact Allan England's Team

01592 752 944



Altyre Court, Glenrothes

Offers over £117,995

Altyre Court, Glenrothes

Beautifully Renovated 2-Bedroom Terraced Home In The Sought-After Area of Pitteuchar, Glenrothes!

Allan England's Award-Winning Team at First For Homes are delighted to welcome to the market this move-in-condition, beautifully presented 2 Bedroom Terraced family home, ideally located within the highly sought-after area of Pitteuchar, Glenrothes. This property represents an excellent opportunity for first-time buyers or investors alike. The ground floor comprises a welcoming entrance hallway, a bright and spacious lounge, and a stunning newly upgraded kitchen. The current owners have finished the property to a high standard throughout, including new internal doors and fresh, modern décor. Upstairs, the property boasts two generous double bedrooms with storage cupboards, along with a stylish, newly fitted family bathroom. Externally, the home benefits from low-maintenance front and rear gardens, with the rear garden enjoying a peaceful woodland backdrop, perfect for relaxation. Ample on-street parking is available nearby. Early viewing is highly recommended to fully appreciate all this fantastic home has to offer you won't want to miss out!

EPC Rating: C
Council Tax Band: B
Home Report Value: £122,000

Call First For Homes – First for trust... first for service... first for aftercare.

Glenrothes is regarded as one of the most successful Towns in Scotland with a wealth of local amenities including Kingdom Shopping Centre as well as sport and leisure at Michael Woods and a multi-screen cinema. Glenrothes boasts its very own 18-hole Golf course and both Primary and Secondary schooling are available. For the commuter the A92 allows swift access to Edinburgh and there are railway stations at both Thornton and Markinch.





SITUATION – Glenrothes

ENTRANCE HALLWAY

LOUNGE

17'5" x 10'5" (approx) (5.31m x 3.20m (approx))

KITCHEN

10'4" x 7'10" (approx) (3.16m x 2.40m (approx))

STAIRS TO UPPER LEVEL

BEDROOM 1

14'9" x 9'7" (approx) (4.50m x 2.94m (approx))

BEDROOM 2

13'6" x 10'8" (approx) (4.14m x 3.26m (approx))

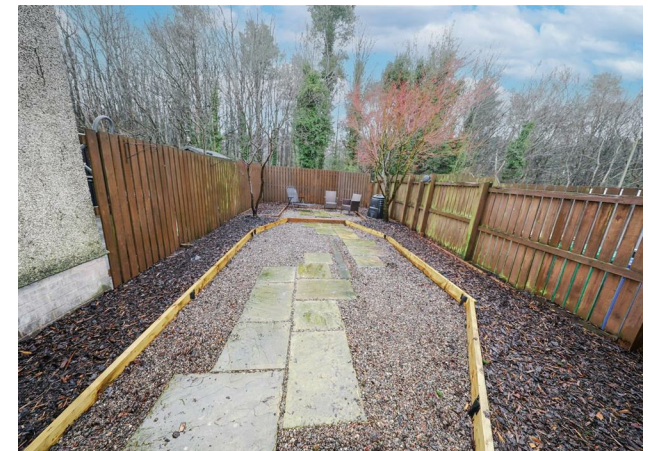
FAMILY BATHROOM

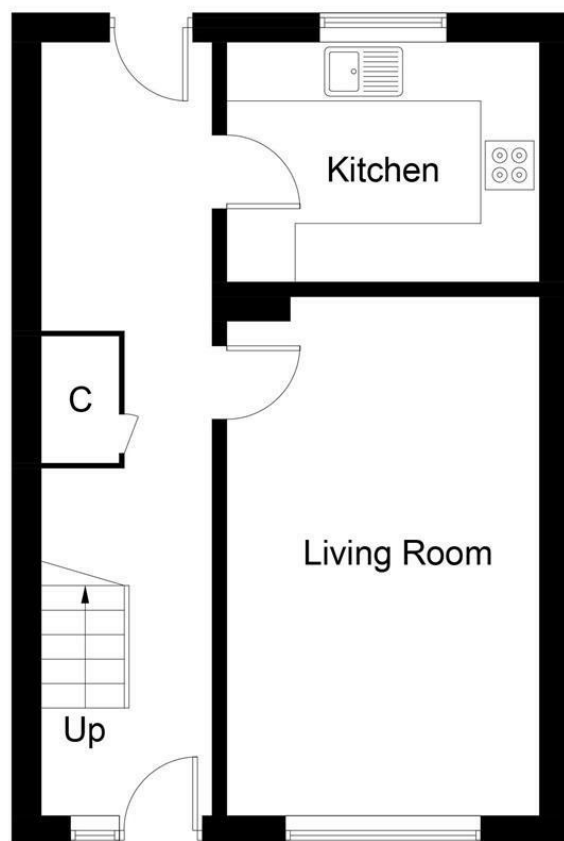
6'9" x 6'9" (approx) (2.08m x 2.06m (approx))

FRONT & REAR GARDEN GROUNDS

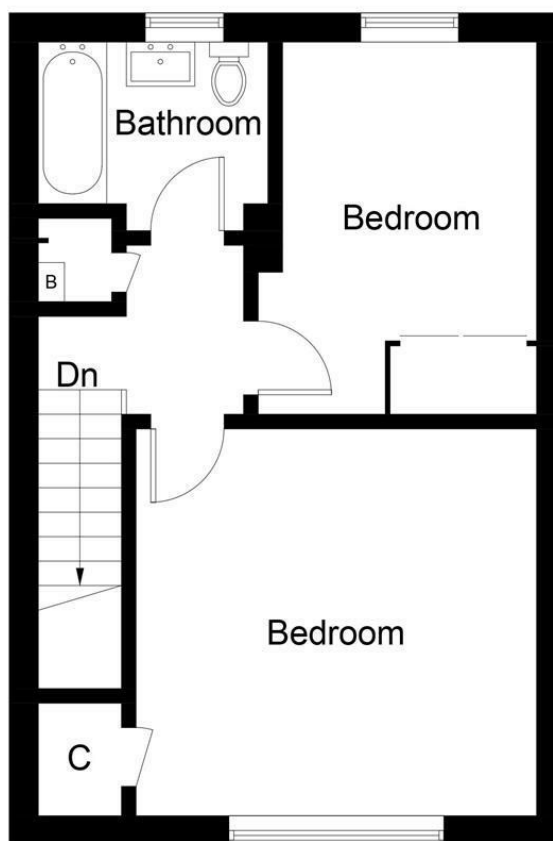
ON STREET PARKING

INFORMATION





Ground Floor



First Floor

Illustration for identification purposes only, measurements are approximate, not to scale. Fourlabs.co © (ID1269557)

Information

These particulars are prepared on the basis of information provided by our clients. We have not tested the electrical system or any electrical appliances, nor where applicable, any central heating system. All sizes are recorded by electronic tape measurement to give an indicative, approximate size only. Prospective purchasers should make their own enquiries – no warranty is given or implied. This schedule is not intended to, and does not form any contract.

FREE Valuation

Selling Your Home?

Choose first for homes - a highly experienced estate agency team you can trust to sell your home at the highest possible price. Offering fantastic savings on selling fees, with no compromise on service, free professional photography highlighting your home in its best light, first for homes will be your first choice. Contact us today to arrange your appointment.



first for trust



first for service



first for aftercare

first for homes

first for property in life - firstforhomes.co.uk

Contact Allan England's Team

01592 752 944

32 North Street, Glenrothes, Fife KY7 5NA

Fax: 01592 807947

sales@firstforhomes.co.uk

www.firstforhomes.co.uk