

first for homes

first for property in life - firstforhomes.co.uk

Contact Allan England's Team

01592 752 944



Kinnell Road, Inverkeithing
Offers over £114,995

Kinnell Road, Inverkeithing

Beautifully Presented, Bright & Spacious 2-Bedroom End-Terraced Villa in the Highly Sought-After Town of Inverkeithing!

Allan England’s award-winning team at First For Homes are delighted to bring to the market this move-in condition 2-bedroom end-terraced villa, ideally located in the desirable coastal town of Inverkeithing, Fife. Perfect for first-time buyers or commuters to Edinburgh, the property benefits from excellent transport links nearby, including rail and road connections. This beautifully maintained home offers modern, comfortable living throughout and comprises: entrance vestibule, bright and spacious lounge/diner, contemporary kitchen, two well-proportioned bedrooms and stunning family shower room. Externally, the property features easily maintained rear garden grounds complete with a lovely decking area, ideal for outdoor dining or relaxing. Ample on-street parking is available to the front and side of the property.

Early viewing is highly recommended to avoid missing out on this fantastic home!

HOME REPORT VALUE- £120,000

EPC RATING- C

COUNCIL TAX BAND- B

Call first for homes - first for trust... first for service... first for aftercare.

Inverkeithing provides easy access to the M90, Forth Road Bridge and Ferry Toll Park & Ride, which provides direct links to Edinburgh, Perth and Dundee. Inverkeithing has its own train station with frequent services to Edinburgh and throughout Fife. Inverkeithing offers both nursery, primary schools and high schools The nearest large Town is Dunfermline. Dunfermline. These particulars are prepared on the basis of information provided by our clients. We have not tested the electrical system or appliances, nor where applicable, any central heating system. All sizes are recorded by electronic tape measurements to give an indicative, approximate size only. Prospective purchasers should make their own enquiries - no warranty is given or implied. This schedule is not intended to, and does not form any contract.





SITUATION - Inverkeithing

ENTRANCE VESTIBULE

LOUNGE/DINER

14'0" x 12'10" (approx) (4.28m x 3.93m (approx))

KITCHEN

10'5" x 8'9" (approx) (3.18m x 2.68m (approx))

STAIRS TO UPPER LEVEL

BEDROOM 1

12'10" x 8'8" (approx) (3.92m x 2.66m (approx))

BEDROOM 2

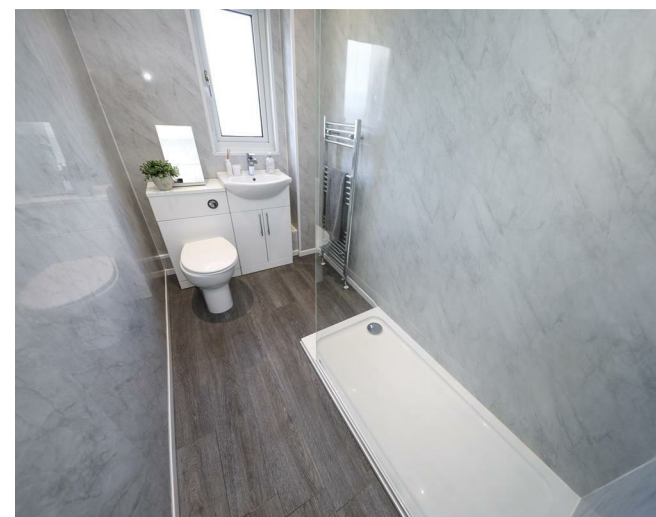
SHOWER ROOM

9'1" x 4'9" (approx) (2.77m x 1.46m (approx))

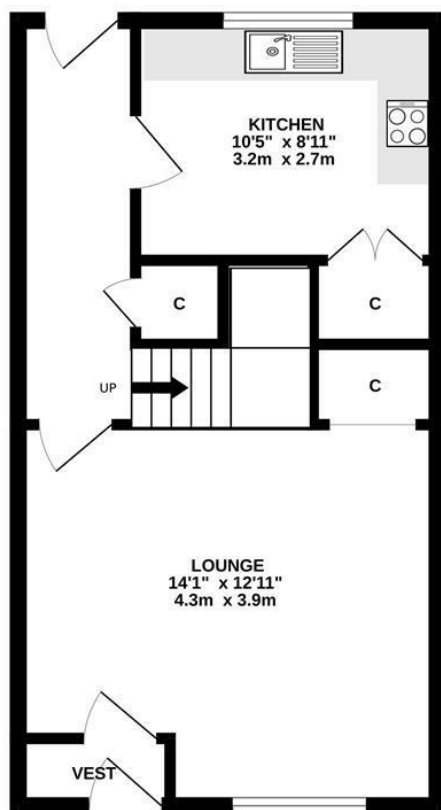
REAR GARDEN GROUNDS

AMPLE ON STREET PARKING TO FRONT AND SIDE

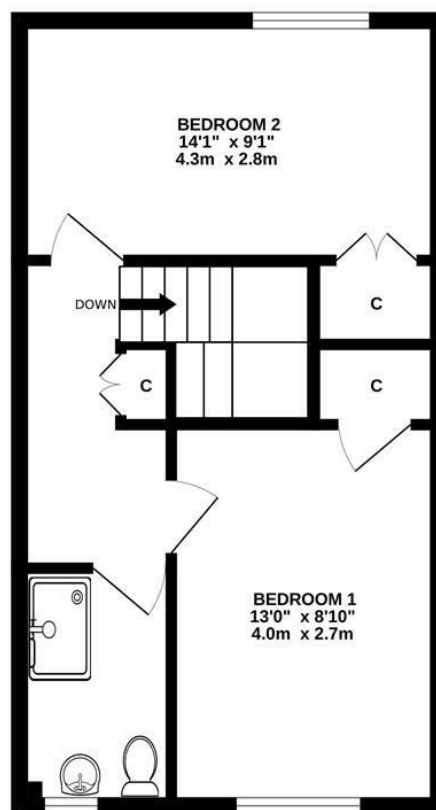
INFORMATION



GROUND FLOOR



1ST FLOOR



Whilst every attempt has been made to ensure the accuracy of the floorplan contained here, measurements of doors, windows, rooms and any other items are approximate and no responsibility is taken for any error, omission or mis-statement. This plan is for illustrative purposes only and should be used as such by any prospective purchaser. The services, systems and appliances shown have not been tested and no guarantee as to their operability or efficiency can be given.
Made with Metropix ©2025

first for homes
first for property in life - firstforhomes.co.uk

Contact Allan England's Team
01592 752 944

Information

These particulars are prepared on the basis of information provided by our clients. We have not tested the electrical system or any electrical appliances, nor where applicable, any central heating system. All sizes are recorded by electronic tape measurement to give an indicative, approximate size only. Prospective purchasers should make their own enquiries – no warranty is given or implied. This schedule is not intended to, and does not form any contract.

FREE Valuation

Selling Your Home?

Choose first for homes - a highly experienced estate agency team you can trust to sell your home at the highest possible price. Offering fantastic savings on selling fees, with no compromise on service, free professional photography highlighting your home in its best light, first for homes will be your first choice. Contact us today to arrange your appointment.



first for trust



first for service



first for aftercare

32 North Street, Glenrothes, Fife KY7 5NA
Fax: 01592 807947
sales@firstforhomes.co.uk
www.firstforhomes.co.uk