

# first for homes

first for property in life - [firstforhomes.co.uk](https://firstforhomes.co.uk)

Contact Allan England's Team

01592 752 944



Evandale Court, Glenrothes

**Offers over £109,995**



# Evandale Court, Glenrothes

Beautifully Presented 2 Bed Mid Terraced Villa Situated In A Sought After Area Of Caskieberran, Glenrothes! Ideal First Time Buyer Home!

Allan England's multi-award-winning team at First For Homes are proud to present to the market this lovely move-in conditioned 2-bedroom Mid Terraced Villa! The property is situated within the sought-after area of Caskieberran, Glenrothes. Boasting lovely, bright and spacious living accommodation throughout comprising : welcoming entrance hallway, open plan lounge/diner, modern kitchen. Stairs to upper level leading to 2 spacious double bedrooms and family bathroom. Externally, there are well kept landscaped garden grounds to the front and rear. Street Parking Available. Early viewing is essential to fully appreciate all this excellent potential home has to offer!

Home Report Value - £115,000

EPC Rating - C

Council Tax Band - A

Don't miss out, call first for homes - first for trust... first for service... first for aftercare







## **SITUATION – Glenrothes**

### **ENTRANCE HALLWAY**

### **OPEN PLAN LOUNGE/DINER**

21'5" x 11'6" approx (6.55m x 3.53m approx)

**KITCHEN** 10'2" x 7'10" approx (3.12m x 2.40m approx)

### **UPPER LEVEL**

### **BEDROOM 1**

14'7" x 9'6" approx (4.46m x 2.90m approx)

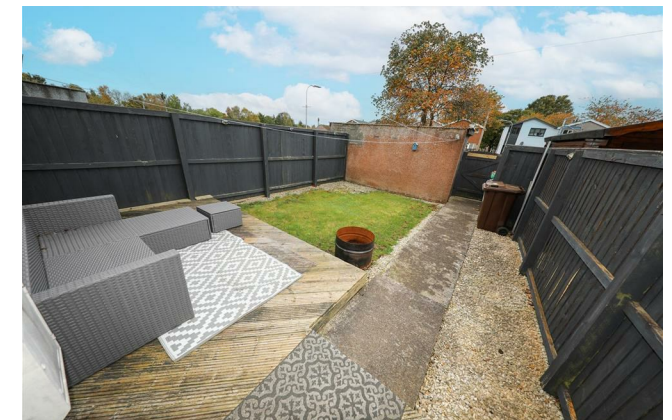
### **BEDROOM 2**

11'6" x 9'6" approx (3.51m x 2.91m approx)

**BATHROOM** 6'0" x 5'6" approx (1.85m x 1.68m approx)

### **GARDEN GROUNDS FRONT AND REAR**

### **INFORMATION**





## Information

These particulars are prepared on the basis of information provided by our clients. We have not tested the electrical system or any electrical appliances, nor where applicable, any central heating system. All sizes are recorded by electronic tape measurement to give an indicative, approximate size only. Prospective purchasers should make their own enquiries – no warranty is given or implied. This schedule is not intended to, and does not form any contract.

## FREE Valuation

### Selling Your Home?

Choose first for homes - a highly experienced estate agency team you can trust to sell your home at the highest possible price. Offering fantastic savings on selling fees, with no compromise on service, free professional photography highlighting your home in its best light, first for homes will be your first choice. Contact us today to arrange your appointment.



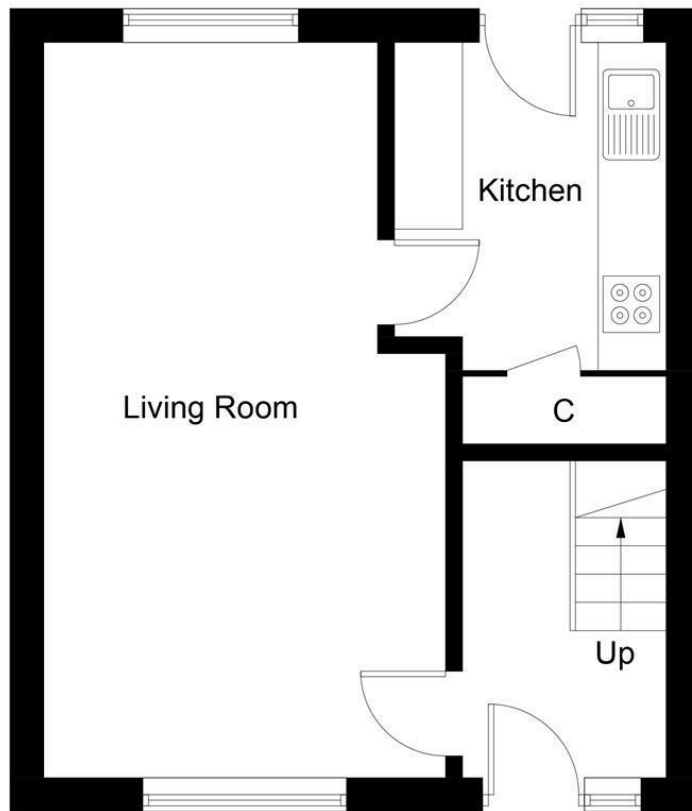
**first for trust**



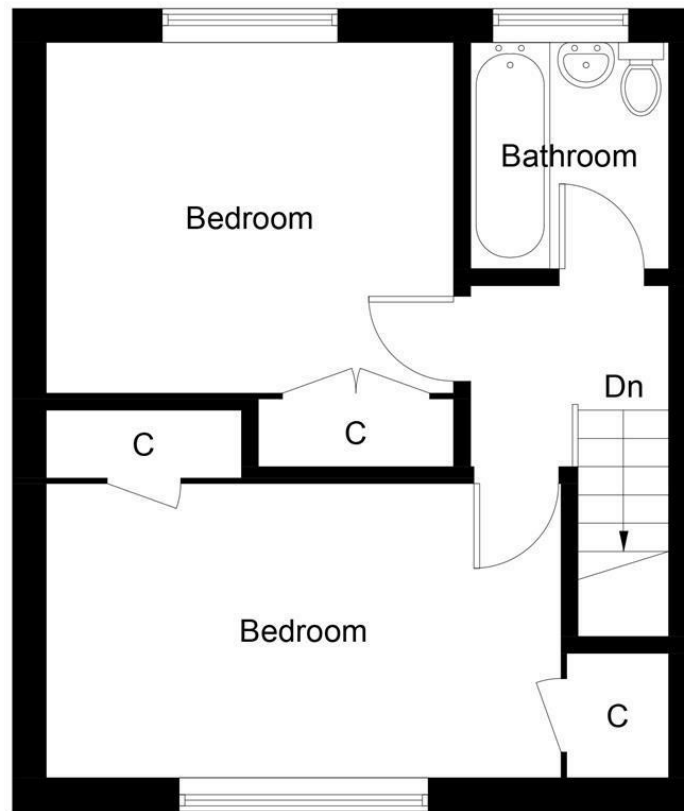
**first for service**



**first for aftercare**



**Ground Floor**



**First Floor**

Illustration for identification purposes only, measurements are approximate, not to scale. Fourlabs.co © (ID1248061)

**first for homes**  
first for property in life - [firstforhomes.co.uk](http://firstforhomes.co.uk)

Contact Allan England's Team  
**01592 752 944**

32 North Street, Glenrothes, Fife KY7 5NA  
Fax: 01592 807947  
[sales@firstforhomes.co.uk](mailto:sales@firstforhomes.co.uk)  
[www.firstforhomes.co.uk](http://www.firstforhomes.co.uk)