

# first for homes

first for property in life - [firstforhomes.co.uk](https://firstforhomes.co.uk)

Contact Allan England's Team  
**01592 752 944**



Ramsay Gardens, Leslie

**Offers over £199,000**



# Ramsay Gardens, Leslie

Lovely Extended 2-Bed Semi-Detached Bungalow Situated Within A Quiet Cul-De-Sac In The Popular Village of Leslie!

Allan England's award winning team at first for homes are proud to welcome to the market this lovely 2-bed extended Semi-Detached Bungalow situated within the Village of Leslie. The property offers all-on-the level accommodation comprising: welcoming entrance hall with Oak wood finishing, lounge with patio doors, kitchen/diner, main bedroom with en-suite shower room, bedroom 2 and shower room. Externally, there is a 2-car mono-block driveway leading to the single garage with up-and-over door and power and lighting. Garden to the rear is on a split-level. Early viewing is highly advised to ensure you don't miss out!

HOME REPORT VALUE £205,000

EPC RATING D

COUNCIL TAX BAND D

Call first for homes - first for trust... first for service... first for aftercare!

Leslie provides a range of local amenities including shops, restaurants and Primary School. Leslie is adjacent to Glenrothes which is regarded as one of the most successful Towns in Scotland with a wealth of local amenities including Kingdom Shopping Centre as well as sport and leisure at Michael Woods. Glenrothes boasts its very own 18-hole Golf course and both Primary and Secondary schooling are available. For the commuter the A92 allows swift access to Edinburgh and there are railway stations at both Thornton and Markinch.







**SITUATION - Leslie**

**ENTRANCE HALLWAY**

**LOUNGE**

18'8" x 10'3" (approx) (5.7m x 3.14m (approx))

**KITCHEN/DINER**

**BEDROOM 1**

15'1" x 10'5" (approx) (4.60m x 3.20m (approx))

**EN-SUITE** 7'6" x 6'6" (approx) (2.30m x 2.00m (approx))

**BEDROOM 2**

10'11" x 8'9" (approx) (3.35m x 2.68m (approx))

**SHOWER ROOM**

6'5" x 5'5" (approx) (1.96m x 1.66m (approx))

**SINGLE GARAGE**

**2 CAR DRIVEWAY**

**GARDEN GROUNDS**

**INFORMATION**



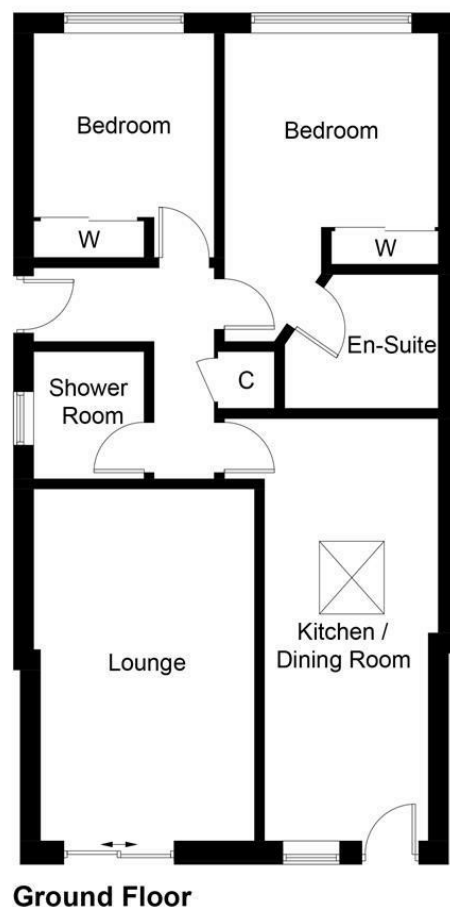


Illustration for identification purposes only, measurements are approximate, not to scale. Fourlabs.co © (ID1246993)

## Information

These particulars are prepared on the basis of information provided by our clients. We have not tested the electrical system or any electrical appliances, nor where applicable, any central heating system. All sizes are recorded by electronic tape measurement to give an indicative, approximate size only. Prospective purchasers should make their own enquiries – no warranty is given or implied. This schedule is not intended to, and does not form any contract.

## FREE Valuation

### Selling Your Home?

Choose first for homes - a highly experienced estate agency team you can trust to sell your home at the highest possible price. Offering fantastic savings on selling fees, with no compromise on service, free professional photography highlighting your home in its best light, first for homes will be your first choice. Contact us today to arrange your appointment.



**first for trust**



**first for service**



**first for aftercare**

**first for homes**  
first for property in life - [firstforhomes.co.uk](http://firstforhomes.co.uk)

Contact Allan England's Team  
**01592 752 944**

32 North Street, Glenrothes, Fife KY7 5NA  
Fax: 01592 807947  
[sales@firstforhomes.co.uk](mailto:sales@firstforhomes.co.uk)  
[www.firstforhomes.co.uk](http://www.firstforhomes.co.uk)