

first for homes

first for property in life - firstforhomes.co.uk

Contact Allan England's Team

01592 752 944



West Torbain, Kirkcaldy

Offers over £142,995

West Torbain, Kirkcaldy

Breathtaking Immaculately Presented 3-Bed End Terraced Family Home, With High Quality Finishes Throughout, Situated in the sought after area of Chapelhill, Kirkcaldy

Allan England's Award-Winning Team at first for homes are proud to welcome to the market this move-in condition 3-bed mid terraced villa situated within the popular area of Chapelhill, Kirkcaldy. The property boasts bright and spacious living accommodation throughout, comprising: welcoming hallway, spacious lounge/diner, a modern newly fitted kitchen, 3 generous bedrooms, luxurious family bathroom. The property has been finished to a very high standard, current owners have upgraded kitchen, bathroom, re-plastered & decorated throughout, fitted new flooring, installed new boiler. Externally there is beautifully landscaped front and rear gardens, ample street parking to rear and side is also available. Early viewing is highly recommended to ensure you don't miss out.

EPC Rating- C
Council Tax Band- C
Home Report Value- £150,000

Call first for homes - first for trust... first for service... first for aftercare.

The popular coastal Town of Kirkcaldy has a wide range of services including shopping, banking, schools and a host of recreational facilities such as the stunning Beveridge Park and the Adam Smith Theatre. For the commuter Kirkcaldy boasts a mainline train station and the A92 road link giving access to Edinburgh and all major local towns.





SITUATION - Kirkcaldy

ENTRANCE HALLWAY

OPEN PLAN LOUNGE/DINER

25'10" x 10'10" approx (7.88m x 3.32m approx)

MODERN KITCHEN

10'9" x 8'4" approx (3.28m x 2.56m approx)

UPPER LEVEL

BEDROOM 1

13'8" x 10'10" approx (4.18m x 3.32m approx)

BEDROOM 2

12'11" x 9'10" approx (3.95m x 3.01m approx)

BEDROOM 3 8'6" x 8'1" approx (2.60m x 2.47m approx)

FAMILY BATHROOM

6'5" x 5'6" approx (1.97m x 1.68m approx)

LARGE FLOORED ATTIC

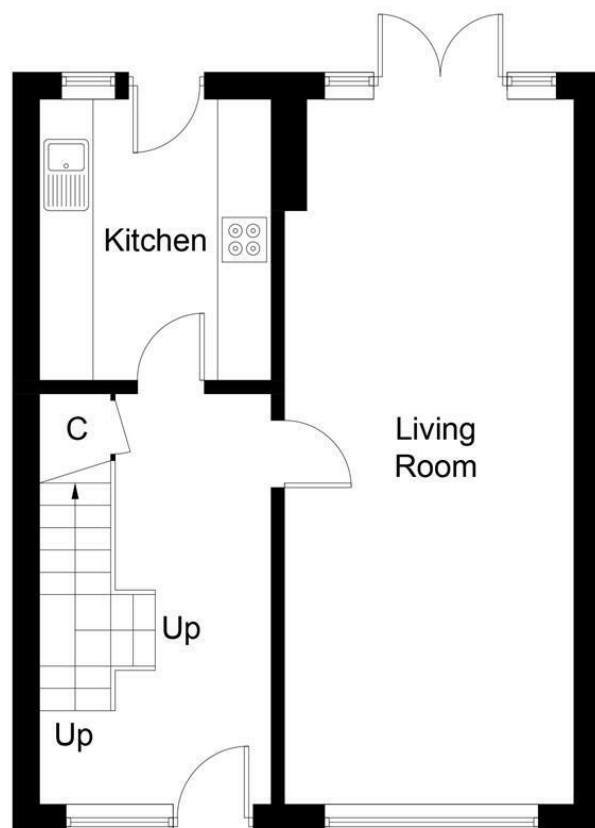
LANDSCAPED GARDENS TO FRONT AND REAR

AMPLE STREET PARKING

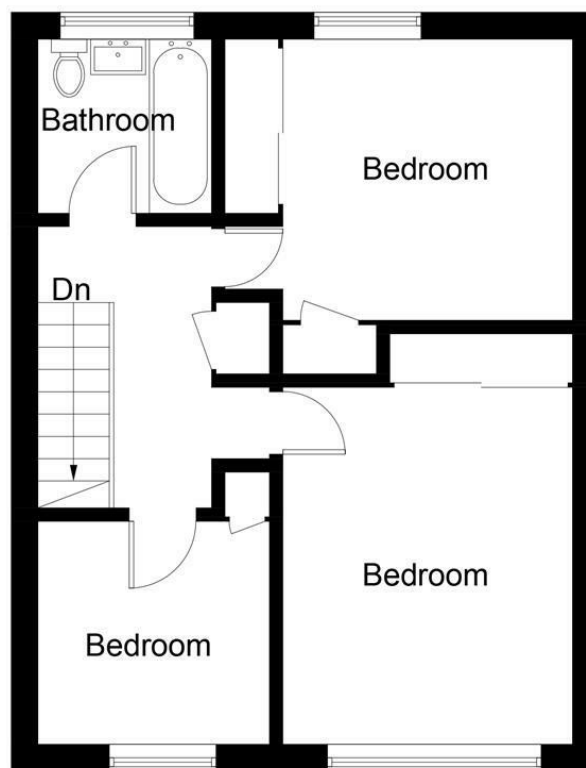
OUTSIDE POWER

INFORMATION





Ground Floor



First Floor

Illustration for identification purposes only, measurements are approximate, not to scale. Fourlabs.co © (ID1222212)

Information

These particulars are prepared on the basis of information provided by our clients. We have not tested the electrical system or any electrical appliances, nor where applicable, any central heating system. All sizes are recorded by electronic tape measurement to give an indicative, approximate size only. Prospective purchasers should make their own enquiries – no warranty is given or implied. This schedule is not intended to, and does not form any contract.

FREE Valuation

Selling Your Home?

Choose first for homes - a highly experienced estate agency team you can trust to sell your home at the highest possible price. Offering fantastic savings on selling fees, with no compromise on service, free professional photography highlighting your home in its best light, first for homes will be your first choice. Contact us today to arrange your appointment.



first for trust



first for service



first for aftercare

first for homes
first for property in life - firstforhomes.co.uk

Contact Allan England's Team
01592 752 944

32 North Street, Glenrothes, Fife KY7 5NA
Fax: 01592 807947
sales@firstforhomes.co.uk
www.firstforhomes.co.uk