

first for homes

first for property in life - firstforhomes.co.uk

Contact Allan England's Team

01592 752 944



Cheviot Road, Kirkcaldy

Offers over £106,995

Cheviot Road, Kirkcaldy

Spacious & Bright 3 Bedroom Terraced Villa Situated In A Desirable Area of Kirkcaldy!

Allan England's award winning team at first for homes are proud to welcome to the market this Lovely 3 Bedroom Terraced Villa situated in the desirable area of Kirkcaldy. This well presented family home comprises; entrance hallway, space lounge with feature fireplace, kitchen/diner with patio doors leading to rear garden, wet room, stairs to the upper level, 3 bedrooms with built in storage. Externally, there are easy to maintain gardens to the front (driveway could be added subject to planning consents), lovely easy maintenance rear grounds. Large Shed. Ample street parking available. This lovely property would suit a family looking for their forever home or as a buy to let investment! Early viewing is highly recommended call 01592 752944 to secure your slot today!

EPC Rating - D

Council Tax Band - B

Home Report - £112,000

Call first for homes - first for trust... first for service... first for aftercare.

The popular coastal Town of Kirkcaldy has a wide range of services including shopping, banking, schools and a host of recreational facilities such as the stunning Beveridge Park and the Adam Smith Theatre. For the commuter Kirkcaldy boasts a mainline train station and the A92 road link giving access to Edinburgh and all major local towns.





SITUATION - Kirkcaldy

ENTRANCE HALLWAY

LOUNGE 14'6" x 12'9" approx (4.43m x 3.91m approx)

KITCHEN/DINER

12'9" x 9'2" approx (3.90m x 2.81m approx)

WET ROOM 6'9" x 6'0" approx (2.07m x 1.83m approx)

STAIRS TO UPPER LEVEL

BEDROOM 1 16'4" x 10'0" approx (5.00 x 3.06m approx)

BEDROOM 2

13'9" x 8'10" approx (4.21m x 2.71m approx)

BEDROOM 3

10'2" x 8'10" approx (3.10m x 2.71m approx)

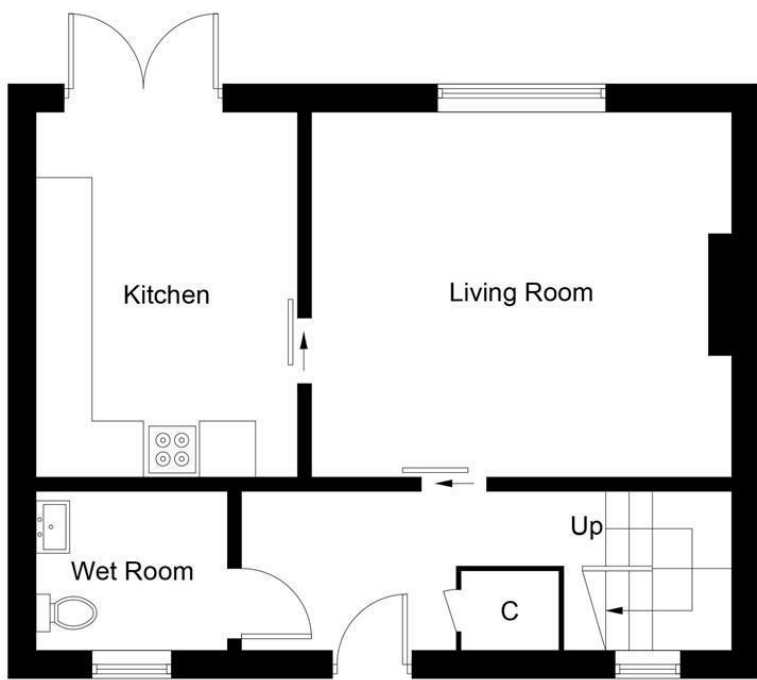
FRONT & REAR GARDENS

SPACE TO ADD DRIVEWAY (SUBJECT TO PLANNING)

LARGE SHED TO REAR

INFORMATION





Ground Floor



First Floor

Illustration for identification purposes only, measurements are approximate, not to scale. Fourlabs.co © (ID1215125)

Information

These particulars are prepared on the basis of information provided by our clients. We have not tested the electrical system or any electrical appliances, nor where applicable, any central heating system. All sizes are recorded by electronic tape measurement to give an indicative, approximate size only. Prospective purchasers should make their own enquiries – no warranty is given or implied. This schedule is not intended to, and does not form any contract.

FREE Valuation

Selling Your Home?

Choose first for homes - a highly experienced estate agency team you can trust to sell your home at the highest possible price. Offering fantastic savings on selling fees, with no compromise on service, free professional photography highlighting your home in its best light, first for homes will be your first choice. Contact us today to arrange your appointment.



first for trust



first for service



first for aftercare

first for homes
first for property in life - firstforhomes.co.uk

Contact Allan England's Team
01592 752 944

32 North Street, Glenrothes, Fife KY7 5NA
Fax: 01592 807947
sales@firstforhomes.co.uk
www.firstforhomes.co.uk