

first for homes

first for property in life - firstforhomes.co.uk

Contact Allan England's Team

01592 752 944



Roomlin Gardens, Kirkcaldy

Offers over £134,995

Roomlin Gardens, Kirkcaldy

Lovely 3-Bed Terraced Villa With 2-Car Driveway Situated Within desirable area of Kirkcaldy

Allan England's award winning team at first for homes are proud to welcome to the market this lovely 3-bed Terraced Villa situated within a desirable area of Kirkcaldy. The property has been tastefully decorated throughout and offers move-in living accommodation comprising: entrance hall, family lounge, open-plan breakfasting kitchen/dining room, cloaks/WC, 3 bedrooms and family bathroom. Externally, there boasts a 2-car driveway and generous rear gardens. Early viewing is highly recommended to ensure you don't miss out!

HOME REPORT VALUE £140,000

EPC RATING D

COUNCIL TAX BAND C

Call first for homes - first for trust... first for service... first for aftercare!

SITUATION - The popular coastal Town of Kirkcaldy has a wide range of services including shopping, banking, schools and a host of recreational facilities such as the stunning Beveridge Park and the Adam Smith Theatre. For the commuter Kirkcaldy boasts a mainline train station and the A92 road link giving access to Edinburgh and all major local towns.

- Lovely Move-In Condition Family Home
- 3-Bed Mid Terraced Villa
- 2-Car Driveway
- Generous Rear Gardens
- Open-Plan Breakfasting Kitchen & Dining Space
- Desirable Area Of Kirkcaldy
- Early Viewing Essential
- HOME REPORT VALUE £140,000
- EPC RATING D
- COUNCIL TAX BAND C





SITUATION - Kirkcaldy

ENTRANCE HALL

FAMILY LOUNGE

16'1" x 10'5" approx. (4.91m x 3.18m approx.)

OPEN-PLAN BREAKFASTING KITCHEN / DINING ROOM

20'1" x 10'0" approx. (6.13m x 3.05m approx.)

CLOAKS / WC

UPPER LEVEL

BEDROOM 1

12'3" x 9'10" approx. (3.74m x 3m approx.)

BEDROOM 2

11'8" x 9'2" approx. (3.57m x 2.80m approx.)

BEDROOM 3

10'5" x 9'10" approx. (3.20m x 3.02m approx.)

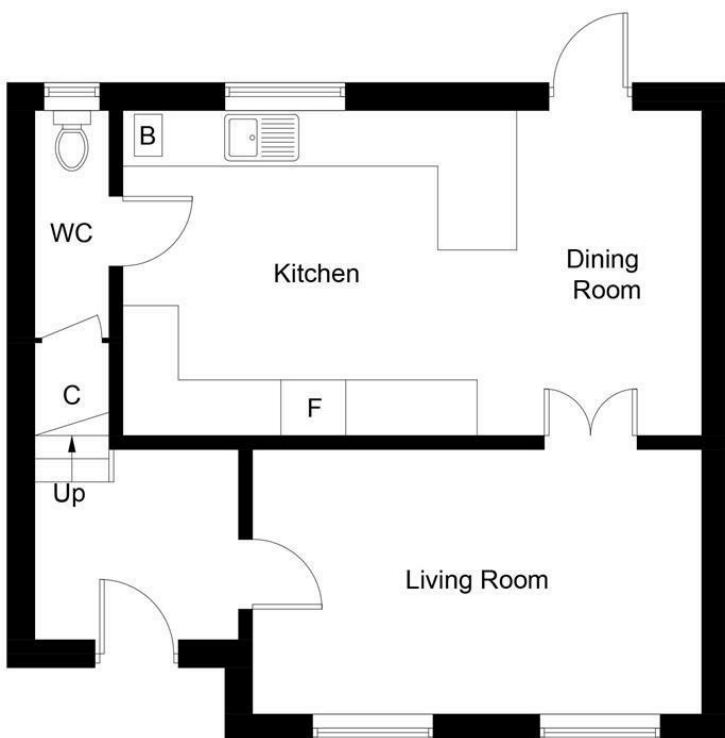
FAMILY BATHROOM

6'5" x 5'4" approx. (1.96m x 1.64m approx.)

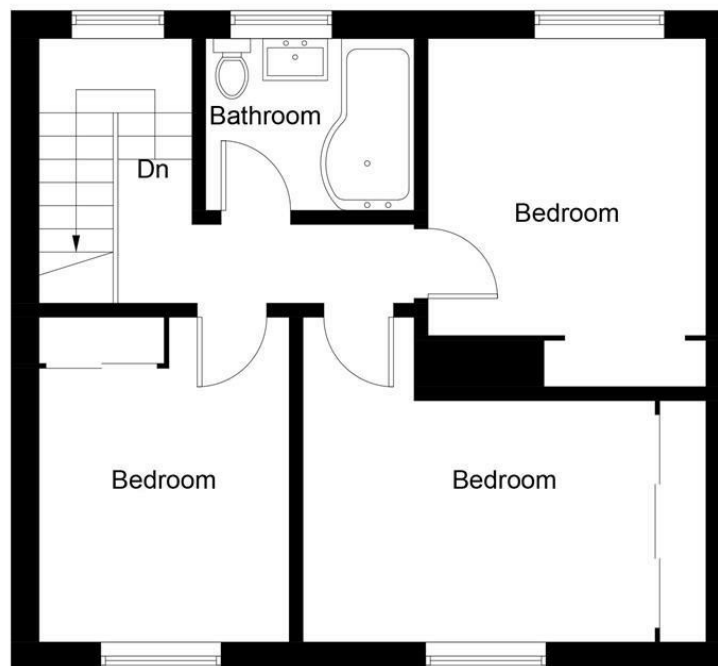
2-CAR DRIVEWAY

GARDEN GROUNDS

INFORMATION



Ground Floor



First Floor

Illustration for identification purposes only, measurements are approximate, not to scale. Fourlabs.co © (ID1213532)

Information

These particulars are prepared on the basis of information provided by our clients. We have not tested the electrical system or any electrical appliances, nor where applicable, any central heating system. All sizes are recorded by electronic tape measurement to give an indicative, approximate size only. Prospective purchasers should make their own enquiries – no warranty is given or implied. This schedule is not intended to, and does not form any contract.

FREE Valuation

Selling Your Home?

Choose first for homes - a highly experienced estate agency team you can trust to sell your home at the highest possible price. Offering fantastic savings on selling fees, with no compromise on service, free professional photography highlighting your home in its best light, first for homes will be your first choice. Contact us today to arrange your appointment.



first for trust



first for service



first for aftercare

first for homes
first for property in life - firstforhomes.co.uk

Contact Allan England's Team
01592 752 944

32 North Street, Glenrothes, Fife KY7 5NA
Fax: 01592 807947
sales@firstforhomes.co.uk
www.firstforhomes.co.uk