

first for homes

first for property in life - firstforhomes.co.uk

Contact Allan England's Team

01592 752 944



Abbots Mill, Kirkcaldy

Offers over £194,995

Abbots Mill, Kirkcaldy

Stunning Spacious 3-Bedroom 2nd Floor Apartment With Single Garage, Situated Approx. 200 Yards From Beveridge Park, Kirkcaldy! Fantastic Central Location Offering Recently Updated Move In Condition Accommodation!

Allan England's award winning team at first for homes are proud to welcome to the market this lovely 3-Bed 2nd Floor Apartment situated within the heart of Kirkcaldy! The property is conveniently located just 200 yards (approx.) from Beveridge Park. This luxury apartment offers move-in condition accommodation comprising: secure entry system, stairs to 2nd level, spacious entrance hallway, 2 storage cupboards, solid oak doors throughout to modern open-plan lounge/diner with partial sea and church views with an abundance of natural light from 4 lounge windows, newly installed kitchen in 2023 with integrated induction hob, oven, frost free fridge and freezer, dishwasher and washing machine, master bedroom with double built in wardrobes and further sea views with en-suite shower room updated in Jan 2024, bedroom 2 currently serving as dining room with double built in wardrobes and bedroom 3 also generously sized, the property is complete internally with a new family shower room updated in Dec 2023 and newly installed windows in Apr 2024,

Externally, there are beautifully maintained communal garden grounds, ample residents parking bays and a single garage just a short distance from the property.

Located in a prime town centre location, all local amenities are just a short walk away—including the Beveridge Park, Train Station, Bus Station, Gym, Library, Adam Smith Theatre, and more.

An exceptional opportunity to secure a stylish home in a central and convenient location. Early viewing is highly recommended.

EPC RATING- C
COUNCIL TAX BAND- E
HOME REPORT VALUE- £205,000

The popular coastal Town of Kirkcaldy has a wide range of services including shopping, banking, schools and a host of recreational facilities such as the stunning Beveridge Park and the Adam Smith Theatre. For the commuter Kirkcaldy boasts a mainline train station and the A92 road link giving access to Edinburgh and all major local towns.





SITUATION - Kirkcaldy

SECURE ENTRY SYSTEM

STAIRS TO 2ND LEVEL

ENTRANCE HALLWAY

OPEN PLAN LOUNGE/DINER

20'1" x 15'0" (approx) (6.14m x 4.58m (approx))

KITCHEN 9'8" x 9'6" (approx) (2.95m x 2.90m (approx))

BEDROOM 1

13'5" x 10'10" (approx) (4.10m x 3.31m (approx))

EN-SUITE

BEDROOM 3

10'9" x 10'3" (approx) (3.28m x 3.13m (approx))

BEDROOM 2/DINING ROOM

14'9" x 8'6" (approx) (4.50m x 2.60m (approx))

SHOWER ROOM

9'3" x 5'5" (approx) (2.84m x 1.66m (approx))

SINGLE GARAGE

16'9" x 7'10" (approx) (5.13m x 2.40m (approx))

RESIDENTIAL PARKING BAYS TO FRONT

INFORMATION



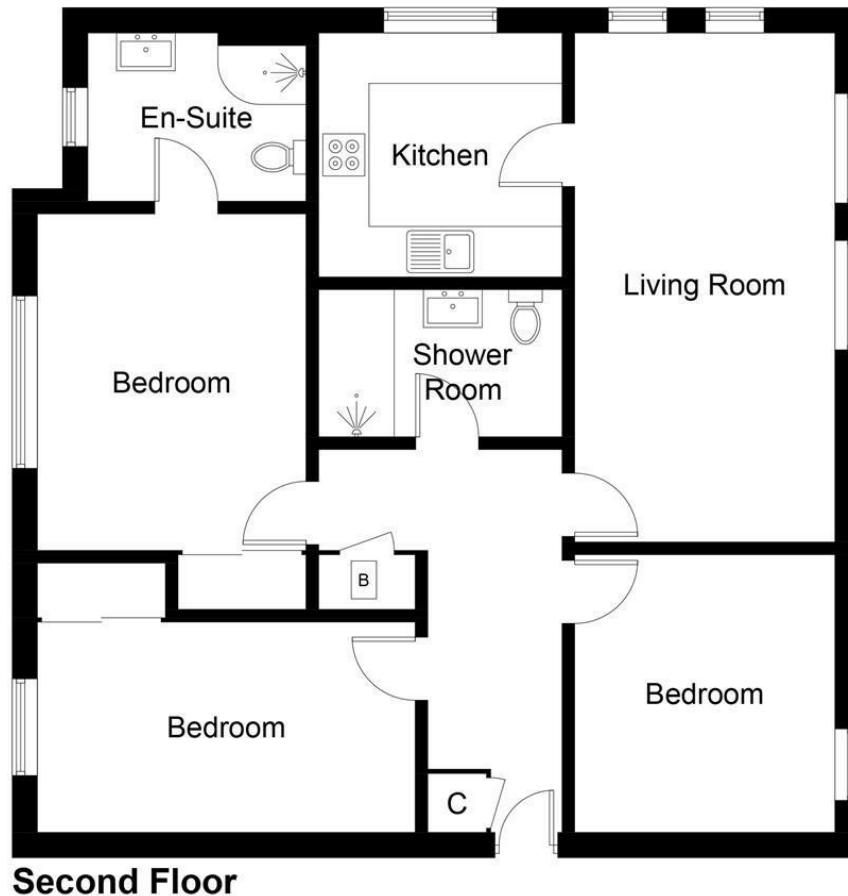


Illustration for identification purposes only, measurements are approximate, not to scale. Fourlabs.co © (ID1208675)

Information

These particulars are prepared on the basis of information provided by our clients. We have not tested the electrical system or any electrical appliances, nor where applicable, any central heating system. All sizes are recorded by electronic tape measurement to give an indicative, approximate size only. Prospective purchasers should make their own enquiries – no warranty is given or implied. This schedule is not intended to, and does not form any contract.

FREE Valuation

Selling Your Home?

Choose first for homes - a highly experienced estate agency team you can trust to sell your home at the highest possible price. Offering fantastic savings on selling fees, with no compromise on service, free professional photography highlighting your home in its best light, first for homes will be your first choice. Contact us today to arrange your appointment.



first for trust



first for service



first for aftercare

first for homes
first for property in life - firstforhomes.co.uk

Contact Allan England's Team
01592 752 944

32 North Street, Glenrothes, Fife KY7 5NA
Fax: 01592 807947
sales@firstforhomes.co.uk
www.firstforhomes.co.uk