

# first for homes

first for property in life - [firstforhomes.co.uk](https://firstforhomes.co.uk)

Contact Allan England's Team

01592 752 944



Town Park Way, Glenrothes

**Offers over £204,995**



# Town Park Way, Glenrothes

Stunning 3-Bed End-Terraced Villa with Driveway – Built by Bellway Homes in 2023

Allan England's award winning team at first for homes welcome to the market this immaculate, move-in condition, this beautifully designed 3-bedroom end-terraced villa is located in a highly desirable area of Glenrothes, just a short distance from the Town Centre and Town Park. Built by Bellway Homes in 2023, the property offers spacious, modern living with an entrance hall, bright lounge, stylish open-plan kitchen/diner, three well-proportioned bedrooms, a contemporary family shower room, and a separate WC. Externally, the home benefits from two private parking bays, an EV charging point, and a fully enclosed rear garden – ideal for families or professionals alike. Early viewing is highly recommended.

HOME REPORT VALUE £215,000

EPC RATING B

COUNCIL TAX BAND D

Call first for homes - first for trust... first for service... first for aftercare.

Glenrothes is regarded as one of the most successful Towns in Scotland with a wealth of local amenities including Kingdom Shopping Centre as well as sport and leisure at Michael Woods and a multi-screen cinema. Glenrothes boasts its very own 18-hole Golf course and both Primary and Secondary schooling are available. For the commuter the A92 allows swift access to Edinburgh and there are railway stations at both Thornton and Markinch.







**SITUATION – Glenrothes**

**ENTRANCE HALLWAY**

**LOUNGE**

15'6" x 14'2" (approx) (4.74m x 4.32m (approx))

**OPEN PLAN KITCHEN DINER**

17'1" x 8'10" (approx) (5.23m x 2.70m (approx))

**CLOAKROOM W/C**

**STAIRS TO UPPER LEVEL**

**BEDROOM 1**

14'2" x 8'6" (approx) (4.33m x 2.60m (approx))

**BEDROOM 2**

10'3" x 10'4" (approx) (3.14m x 3.16m (approx))

**BEDROOM 3**

8'6" x 8'3" (approx) (2.60 x 2.53m (approx))

**SHOWER ROOM**

**2 CAR DRIVEWAY**

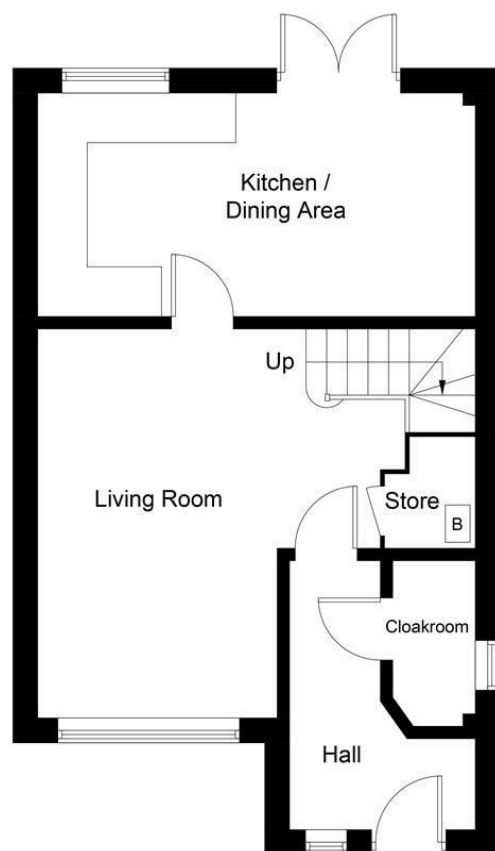
**EV CHARGING POINT**

**REAR GARDEN GROUNDS WITH PATIO AREA**

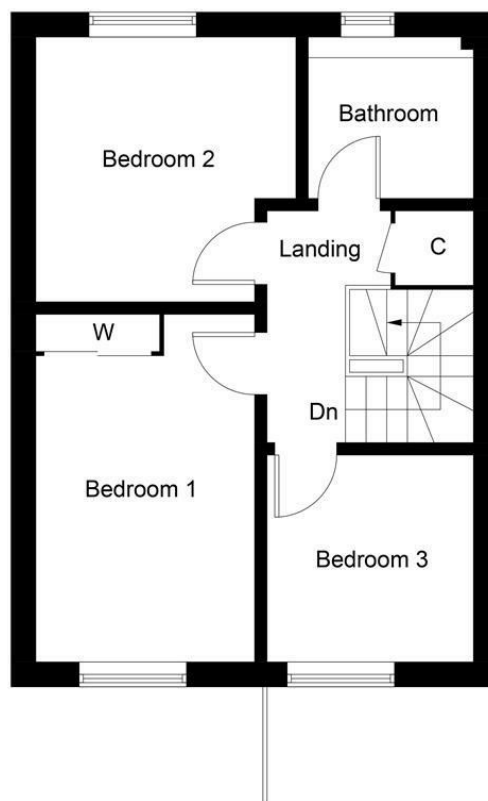
**INFORMATION**







**Ground Floor**



**First Floor**

Illustration for identification purposes only, measurements are approximate, not to scale. Fourlabs.co © (ID1206300)

## Information

These particulars are prepared on the basis of information provided by our clients. We have not tested the electrical system or any electrical appliances, nor where applicable, any central heating system. All sizes are recorded by electronic tape measurement to give an indicative, approximate size only. Prospective purchasers should make their own enquiries – no warranty is given or implied. This schedule is not intended to, and does not form any contract.

## FREE Valuation

### Selling Your Home?

Choose first for homes - a highly experienced estate agency team you can trust to sell your home at the highest possible price. Offering fantastic savings on selling fees, with no compromise on service, free professional photography highlighting your home in its best light, first for homes will be your first choice. Contact us today to arrange your appointment.



**first for trust**



**first for service**



**first for aftercare**

**first for homes**  
first for property in life - [firstforhomes.co.uk](http://firstforhomes.co.uk)

Contact Allan England's Team  
**01592 752 944**

32 North Street, Glenrothes, Fife KY7 5NA  
Fax: 01592 807947  
[sales@firstforhomes.co.uk](mailto:sales@firstforhomes.co.uk)  
[www.firstforhomes.co.uk](http://www.firstforhomes.co.uk)