

first for homes

first for property in life - firstforhomes.co.uk

Contact Allan England's Team

01592 752 944



Ryan Road, Glenrothes

Offers over £94,995

Ryan Road, Glenrothes

Spacious 2-Bedroom Mid-Terraced Villa in Popular Rimbleton Area, Glenrothes

Allan England's Award-Winning Team at First for Homes are proud to present this bright and spacious 2-bedroom mid-terraced villa, ideally situated in the highly sought-after Rimbleton area of Glenrothes. This well-proportioned property offers flexible living space, making it a fantastic opportunity for first-time buyers, investors, or growing families. The accommodation comprises: Welcoming entrance hallway, generous open-plan lounge/diner, perfect for both relaxing and entertaining, kitchen with access to the rear garden. Upper level with two spacious double bedrooms with built-in storage, family shower room. Externally, the home boasts low-maintenance gardens to both the front and rear, ideal for those seeking outdoor space without the upkeep. Ample on-street parking is available for residents and visitors alike. Set in a popular residential location close to local amenities, schools, and transport links, this property offers great potential and excellent value.

Early viewing is highly recommended to avoid missing out on this fantastic opportunity!

EPC Rating- E
Council Tax- B
Home Report Value- £100,000

Call first for homes - first for trust... first for service... first for aftercare!

Glenrothes is regarded as one of the most successful Towns in Scotland with a wealth of local amenities including Kingdom Shopping Centre as well as sport and leisure at Michael Woods and a multi-screen cinema. Glenrothes boasts its very own 18-hole Golf course and both Primary and Secondary schooling are available. For the commuter the A92 allows swift access to Edinburgh and there are railway stations at both Thornton and Markinch.





SITUATION – Glenrothes

ENTRANCE HALLWAY

LOUNGE/DINER

19'5" x 9'8" approx (5.92m x 2.97m approx)

KITCHEN

9'5" x 7'6" approx (2.88m x 2.31m approx)

UPPER LEVEL

BEDROOM 1

14'7" x 8'7" approx (4.47m x 2.64m approx)

BEDROOM 2

11'4" x 10'5" approx (3.47m x 3.20m approx)

SHOWERROOM

6'3" x 5'4" approx (1.92m x 1.65m approx)

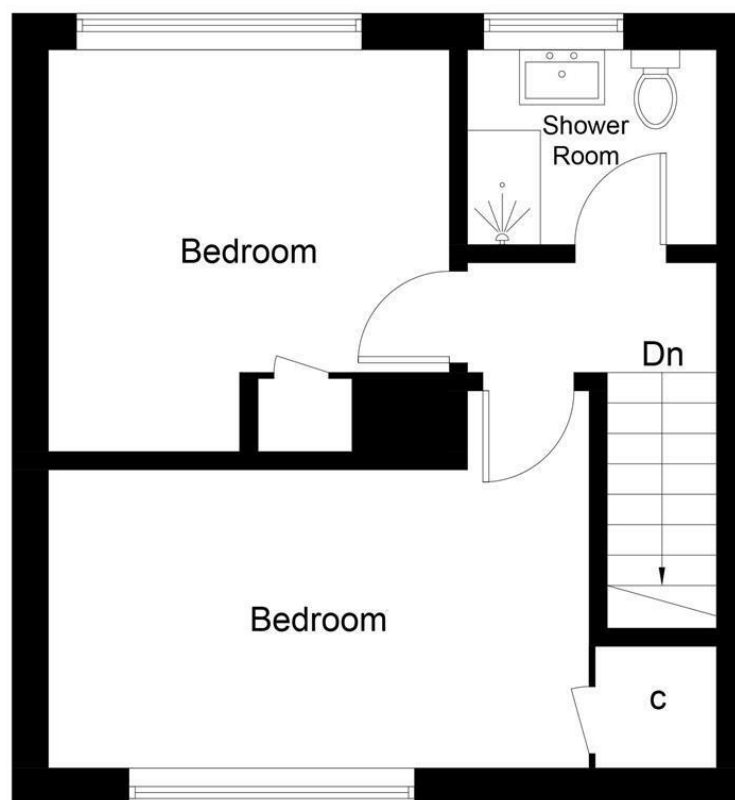
GARDEN GROUNDS

INFORMATION





Ground Floor



First Floor

Illustration for identification purposes only, measurements are approximate, not to scale. Fourlabs.co © (ID1201169)

first for homes
first for property in life - firstforhomes.co.uk

Contact Allan England's Team
01592 752 944

Information

These particulars are prepared on the basis of information provided by our clients. We have not tested the electrical system or any electrical appliances, nor where applicable, any central heating system. All sizes are recorded by electronic tape measurement to give an indicative, approximate size only. Prospective purchasers should make their own enquiries – no warranty is given or implied. This schedule is not intended to, and does not form any contract.

FREE Valuation

Selling Your Home?

Choose first for homes - a highly experienced estate agency team you can trust to sell your home at the highest possible price. Offering fantastic savings on selling fees, with no compromise on service, free professional photography highlighting your home in its best light, first for homes will be your first choice. Contact us today to arrange your appointment.



first for trust



first for service



first for aftercare

32 North Street, Glenrothes, Fife KY7 5NA
Fax: 01592 807947
sales@firstforhomes.co.uk
www.firstforhomes.co.uk