

first for homes

first for property in life - firstforhomes.co.uk

Contact Allan England's Team

01592 752 944



Forth House, Kirkcaldy

Offers over £153,995

Forth House, Kirkcaldy

ANOTHER OPPORTUNITY TO VIEW!!

Stunning 1 bedroom luxury apartment situated in a prestigious gated residential development in a Town Centre Location!

Allan England's Award Winning Team At First For Homes are delighted to welcome to the market this stunning, luxurious 1 bedroom apartment located on first floor situated in a highly sought-after development in Forth House, Kirkcaldy. Residentially converted in 2021.

This lovely apartment offers move-in condition : secure entry system, entrance hallway, large built-in double cupboard, impressive open plan lounge/kitchen/diner with integrated appliances such as fridge freezer, washing machine, dishwasher. The bedroom is generously sized with high ceilings and large windows offering built-in wardrobes. The accommodation is completed with a magnificent shower room with walk-in rain shower, WC and wall mounted vanity unit. The property benefits from modern electric central heating and double glazing. Externally there is private residents parking of 1 car accessed through electric gates and direct access to the railway station.

Externally, there are beautifully maintained communal garden ground and ample parking facilities. Fabulous location all within walking distance to local amenities, Train Station, Gym, Library, Adam Smith Theatre, bus station and other local amenities right on your doorstep.

It is an ideal home in a central location! Early viewing is highly advised to ensure you don't miss out!

EPC Rating - D
Council Tax Band - D
Home Report Value - £160,000

The popular coastal Town of Kirkcaldy has a wide range of services including shopping, banking, schools and a host of recreational facilities such as the stunning Beveridge Park and the Adam Smith Theatre. For the commuter Kirkcaldy boasts a mainline train station and the A92 road link giving access to Edinburgh and all major local towns.





SITUATION - Kirkcaldy

SECURE ENTRY SYSTEM

ENTRANCE HALLWAY

OPEN PLAN LOUNGE/KITCHEN/DINER

23'1" x 12'5" (approx) (7.05m x 3.81m (approx))

BEDROOM

21'10" x 11'3" (approx at widest point) (6.66m x 3.44m (approx at widest point))

SHOWER ROOM

11'1" x 7'11" (approx) (3.38m x 2.42m (approx))

WALK IN STORAGE CUPBOARD

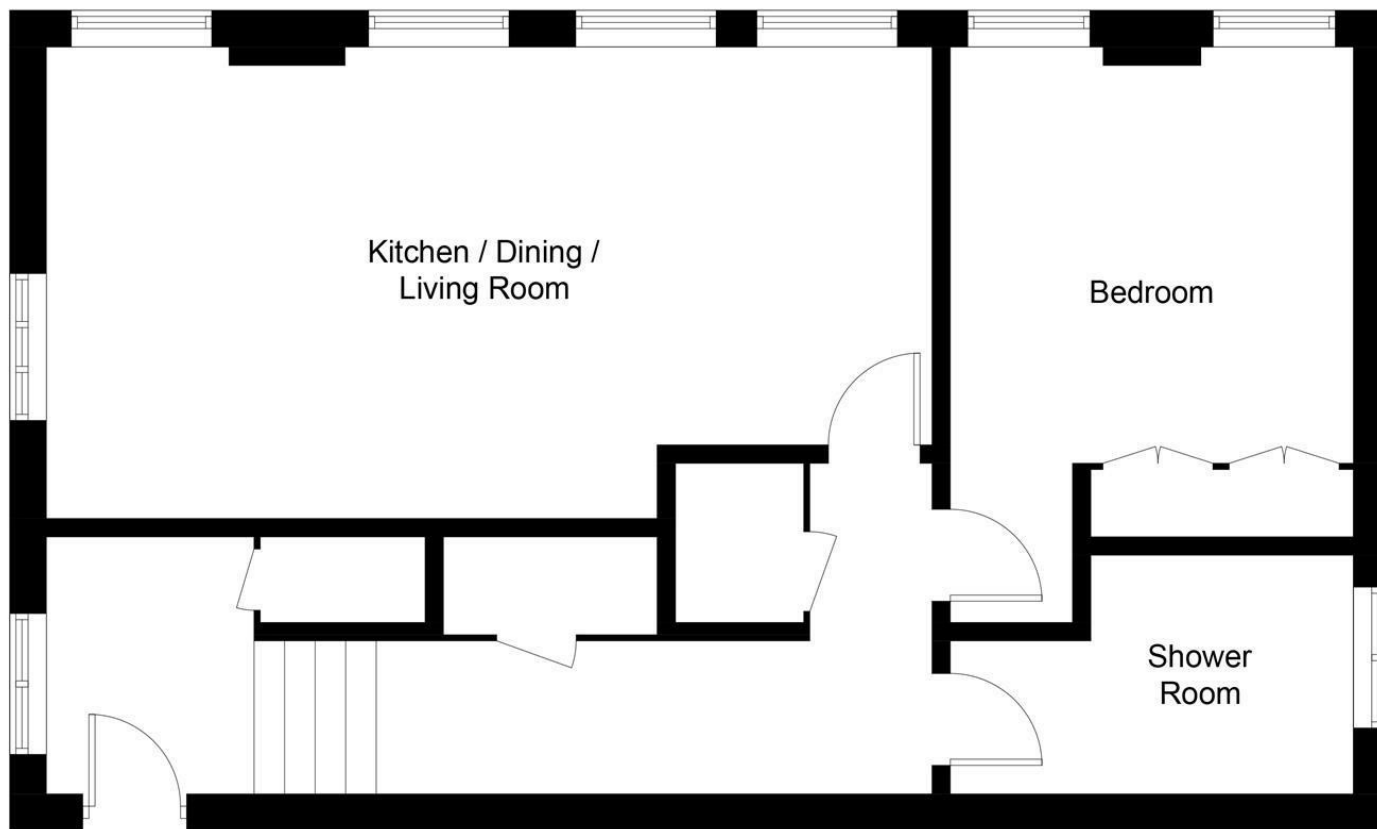
ALLOCATED PARKING SPACE TO SIDE

SHARED GARDEN AREA

SHARED RECYCLING AREA & BIKE SHED

INFORMATION





First Floor

Illustration for identification purposes only, measurements are approximate, not to scale. Fourlabs.co © (ID1193685)

first for homes
first for property in life - firstforhomes.co.uk

Contact Allan England's Team
01592 752 944

Information

These particulars are prepared on the basis of information provided by our clients. We have not tested the electrical system or any electrical appliances, nor where applicable, any central heating system. All sizes are recorded by electronic tape measurement to give an indicative, approximate size only. Prospective purchasers should make their own enquiries – no warranty is given or implied. This schedule is not intended to, and does not form any contract.

FREE Valuation

Selling Your Home?

Choose first for homes - a highly experienced estate agency team you can trust to sell your home at the highest possible price. Offering fantastic savings on selling fees, with no compromise on service, free professional photography highlighting your home in its best light, first for homes will be your first choice. Contact us today to arrange your appointment.



first for trust



first for service



first for aftercare

32 North Street, Glenrothes, Fife KY7 5NA
Fax: 01592 807947
sales@firstforhomes.co.uk
www.firstforhomes.co.uk