

first for homes

first for property in life - firstforhomes.co.uk

Contact Allan England's Team

01592 752 944



Corthan Court, Thornton

Offers over £121,995

Corthan Court, Thornton

Welcome To Corthan Court, A Lovely Spacious 2-Bedroom 1st Floor Apartment Situated Within The Desirable Village Of Thornton. Built By Raith Developments! Excellent Commute To Edinburgh With Local Train Station.

Allan England's award-winning team at first for homes are proud to welcome to the market this beautiful bright and spacious open plan 1st Floor Apartment situated within the desirable Village of Thornton. The property boasts a secure entry system and the accommodation comprises: entrance hall, comfortable lounge, open plan kitchen/diner with integrated appliances including; fridge freezer, oven/hob, master bedroom with built in double wardrobes and en-suite shower room, generous 2nd bedroom and family bathroom with separate shower. Externally, the property benefits from 2 private parking spaces and additional visitor parking is available. Open landscaped areas to the front, lovely views. Thornton boasts a number of amenities and easy accessible transport links. Early viewing is highly recommended to ensure you don't miss out!

Call first for homes - first for trust... first for service... first for aftercare.

EPC Rating- C
Council Tax- C
Home Report Value- £128,000

SITUATION - Thornton provides local shopping for everyday requirements, primary schooling is also available. For the commuter the A92 allows swift access to Edinburgh and there is a railway station in Thornton itself. Nearby Kirkcaldy and Glenrothes provide a wealth of local amenities including shopping, schooling, sport and leisure.





SITUATION - Thornton

SECURE ENTRY SYSTEM

HALLWAY

FAMILY LOUNGE

16'7" x 13'4" approx. (5.08m x 4.08m approx.)

OPEN-PLAN KITCHEN / DINER

14'3" x 10'11" approx. (4.36m x 3.34m approx.)

BEDROOM 1 11'7" 11'7" approx. (3.54m 3.54m approx.)

EN-SUITE SHOWER ROOM

BEDROOM 2

10'11" x 9'10" approx. (3.35m x 3m approx.)

FAMILY BATHROOM

10'11" x 6'7" approx. (3.35m x 2.03m approx.)

2 ALLOCATED PARKING SPACES

COMMUNAL GARDENS

INFORMATION

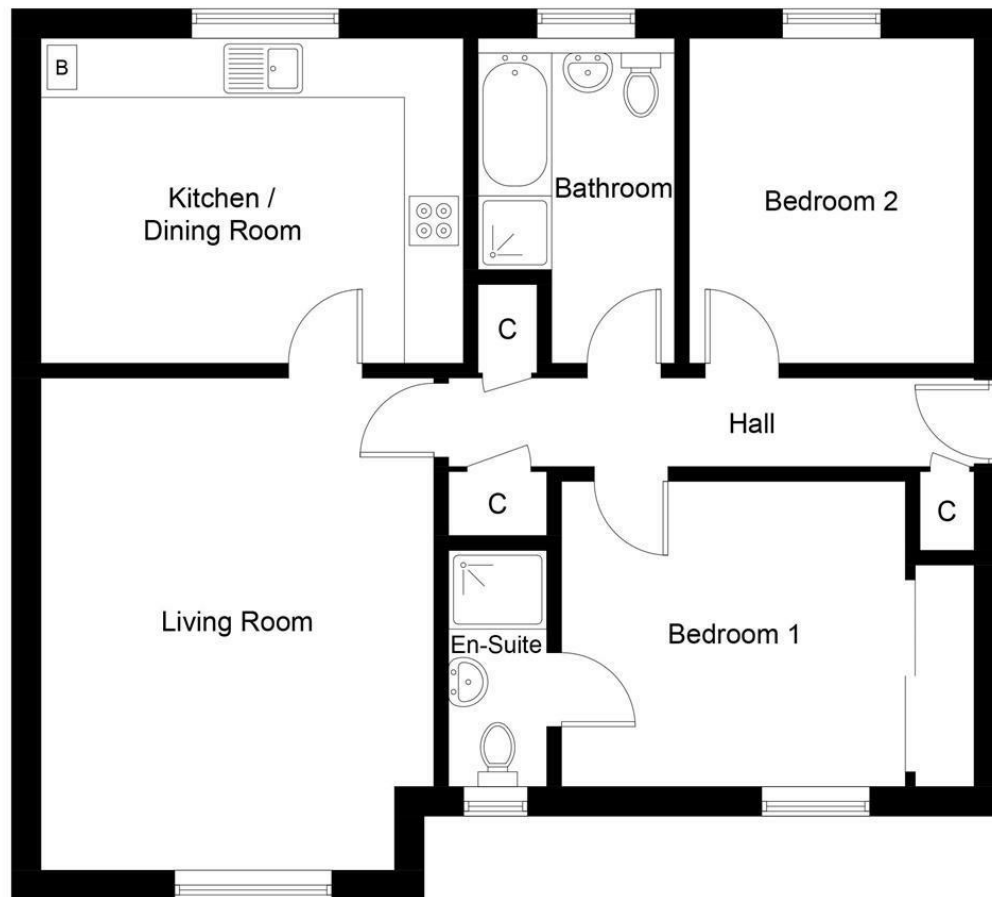


Illustration for identification purposes only, measurements are approximate, not to scale. Fourlabs.co © (ID1184744)

Information

These particulars are prepared on the basis of information provided by our clients. We have not tested the electrical system or any electrical appliances, nor where applicable, any central heating system. All sizes are recorded by electronic tape measurement to give an indicative, approximate size only. Prospective purchasers should make their own enquiries – no warranty is given or implied. This schedule is not intended to, and does not form any contract.

FREE Valuation

Selling Your Home?

Choose first for homes - a highly experienced estate agency team you can trust to sell your home at the highest possible price. Offering fantastic savings on selling fees, with no compromise on service, free professional photography highlighting your home in its best light, first for homes will be your first choice. Contact us today to arrange your appointment.



first for trust



first for service



first for aftercare

first for homes
first for property in life - firstforhomes.co.uk

Contact Allan England's Team
01592 752 944

32 North Street, Glenrothes, Fife KY7 5NA
Fax: 01592 807947
sales@firstforhomes.co.uk
www.firstforhomes.co.uk