

first for homes

first for property in life - firstforhomes.co.uk

Contact Allan England's Team

01592 752 944



Sinclair Avenue, Glenrothes

Offers over £114,995

Sinclair Avenue, Glenrothes

Lovely, Well Presented Ideal Family Home! 3-Bed Mid Terraced Villa In The Sought After Area Of South Parks, Glenrothes! Don't Miss Out! Book Your Viewing Today!

Allan England's Team at first for homes are proud to present to the market this bright and spacious 3-bedroom Mid Terraced Villa set within the highly desirable area of South Parks, Glenrothes. Set within close proximity to both South Parks Primary School and Glenrothes High School it is an ideal location. This family home offers bright and spacious living accommodation comprising: spacious open plan lounge/diner, breakfasting kitchen, 3 bedrooms and family bathroom. Boiler has been upgraded in time. Externally, there are private garden grounds to the front and rear. Viewing is essential to fully appreciate all this fantastic home has to offer and its fantastic location for all amenities locally.

DOWNLOAD HOME REPORT BELOW - CALL TO ARRANGE YOUR VIEWING

EPC Rating - C
Council Tax Band - B
Home Report Value - £120,000

Call first for homes - first for trust... first for service... first for aftercare.

Glenrothes is regarded as one of the most successful Towns in Scotland with a wealth of local amenities including Kingdom Shopping Centre as well as sport and leisure at Michael Woods and a multi-screen cinema. Glenrothes boasts its very own 18-hole Golf course and both Primary and Secondary schooling are available. For the commuter the A92 allows swift access to Edinburgh and there are railway stations at both Thornton and Markinch.

- Wonderful Mid Terrace Family Home
- Open Plan Lounge/Diner
- Spacious Kitchen/Breakfasting
- 3 Generous Bedrooms
- Family Bathroom
- Garden Grounds Front and Rear
- Sought After Area of South Parks
- EPC Rating C
- Council Tax B
- Home Report Value £120,000





SITUATION – Glenrothes

ENTRANCE HALLWAY

OPEN PLAN LOUNGE/DINER

19'8" x 10'3" (approx) (6.00m x 3.14m (approx))

BREAKFASTING KITCHEN

12'6" x 11'9" (approx) (3.82m x 3.60m (approx))

STAIRS TO UPPER LEVEL

BEDROOM 1

15'10" x 8'6" (approx) (4.85m x 2.61m (approx))

BEDROOM 2

10'10" x 9'4" (approx) (3.32m x 2.85m (approx))

BEDROOM 3

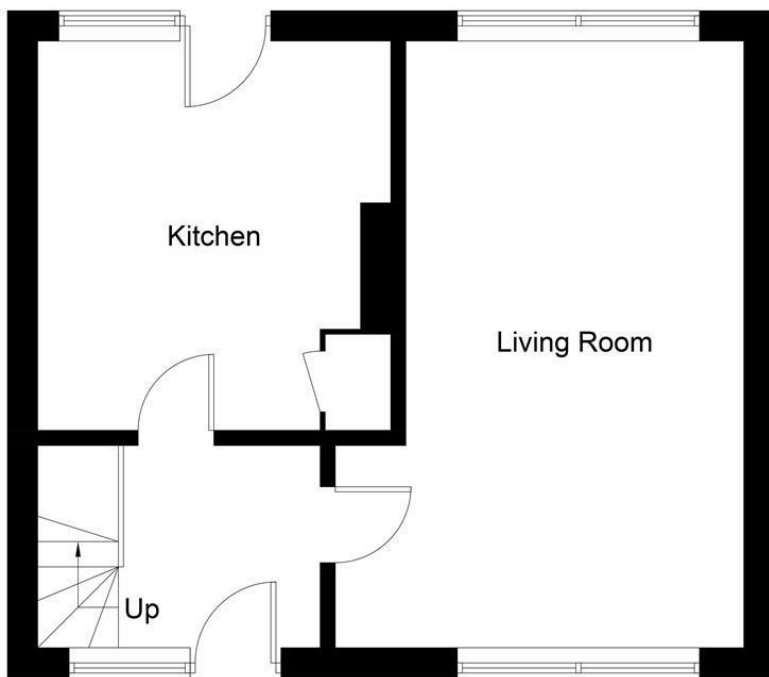
9'4" x 7'10" (approx) (2.85m x 2.40m (approx))

FAMILY BATHROOM

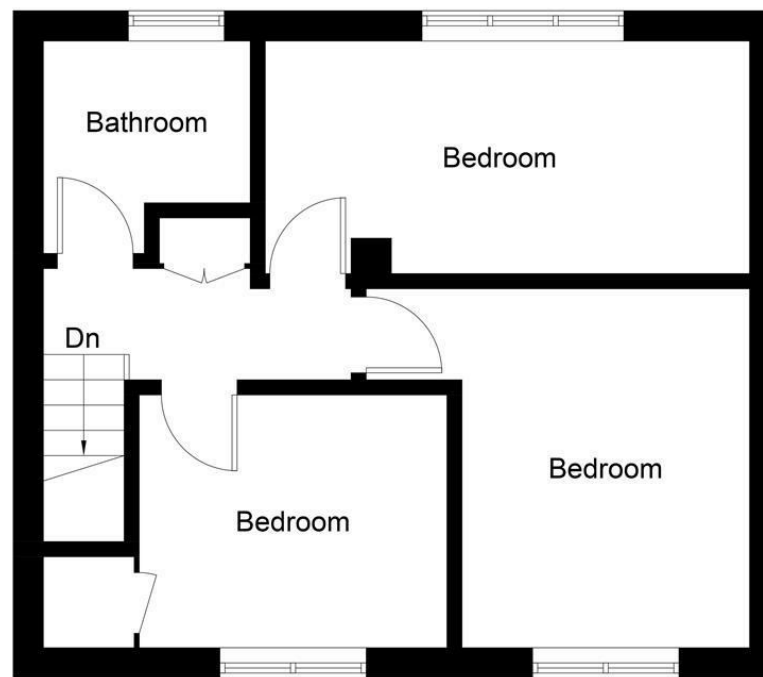
FRONT AND REAR GARDEN GROUNDS

INFORMATION





Ground Floor



First Floor

Illustration for identification purposes only, measurements are approximate, not to scale. Fourlabs.co © (ID1187892)

first for homes
first for property in life - firstforhomes.co.uk

Contact Allan England's Team
01592 752 944

Information

These particulars are prepared on the basis of information provided by our clients. We have not tested the electrical system or any electrical appliances, nor where applicable, any central heating system. All sizes are recorded by electronic tape measurement to give an indicative, approximate size only. Prospective purchasers should make their own enquiries – no warranty is given or implied. This schedule is not intended to, and does not form any contract.

FREE Valuation

Selling Your Home?

Choose first for homes - a highly experienced estate agency team you can trust to sell your home at the highest possible price. Offering fantastic savings on selling fees, with no compromise on service, free professional photography highlighting your home in its best light, first for homes will be your first choice. Contact us today to arrange your appointment.



first for trust



first for service



first for aftercare

32 North Street, Glenrothes, Fife KY7 5NA
Fax: 01592 807947
sales@firstforhomes.co.uk
www.firstforhomes.co.uk