

# first for homes

first for property in life - [firstforhomes.co.uk](https://firstforhomes.co.uk)

Contact Allan England's Team

01592 752 944



Station Road, Dysart

**Offers over £174,995**



# Station Road, Dysart

Welcome To Station Road, A Bright & Spacious 2 Bedroom Detached Bungalow With Single Garage & 2 Car Driveway, Situated In A Cul-De-Sac Setting In Dysart, With Amazing Views!

Allan England's award winning team at first for homes are proud to welcome to the market this excellent potential 2 bedroom detached bungalow offering bright and spacious living accommodation all on one level comprising: entrance vestibule, entrance hallway, open plan lounge/diner with part sea views , kitchen with integrated appliances, 2 generous bedrooms, one with built in triple wardrobes and family shower room.

Externally, this fantastic home provides a chipped driveway for up to 2 cars to the side, a single garage with power and lighting and laid to lawn area to the front. The private rear garden offers mature trees, patio and seating space with summer house. This lovely bungalow is in need of some updating throughout and viewing is highly recommended!

EPC RATING- C  
COUNCIL TAX BAND- D  
HOME REPORT- £185,000

Call first for homes - first for trust... first for service... first for aftercare.

Dysart is set in a beautiful coastal location with panoramic views over the Forth adjacent to the Town of Kirkcaldy. For the commuter Dysart has swift access onto the A92 road link to Edinburgh while there is a mainline railway station in Kirkcaldy with regular services to Edinburgh and the North. Kirkcaldy itself enjoys a wealth of amenities including a shopping centre, hotels, pubs, golf courses, restaurants, cinemas, theatre, sport and leisure centre, primary and secondary schooling.







**SITUATION – Dysart**

**ENTRANCE VESTIBULE**

**ENTRANCE HALLWAY**

**LOUNGE/DINER**

16'0" x 12'2" (approx) (4.90m x 3.71m (approx))

**KITCHEN**

10'7" x 8'10" (approx) (3.24m x 2.71m (approx))

**BEDROOM 1**

12'2" x 9'4" (approx) (3.72m x 2.86m (approx))

**BEDROOM 2**

11'9" x 9'4" (approx) (3.60m x 2.87m (approx))

**SHOWER ROOM**

8'9" x 5'9" (approx) (2.68m x 1.76m (approx))

**SINGLE GARAGE**

18'1" x 9'6" (approx) (5.52m x 2.90m (approx))

**2 CAR DRIVEWAY**

**FRONT & REAR GARDENS**

**INFORMATION**





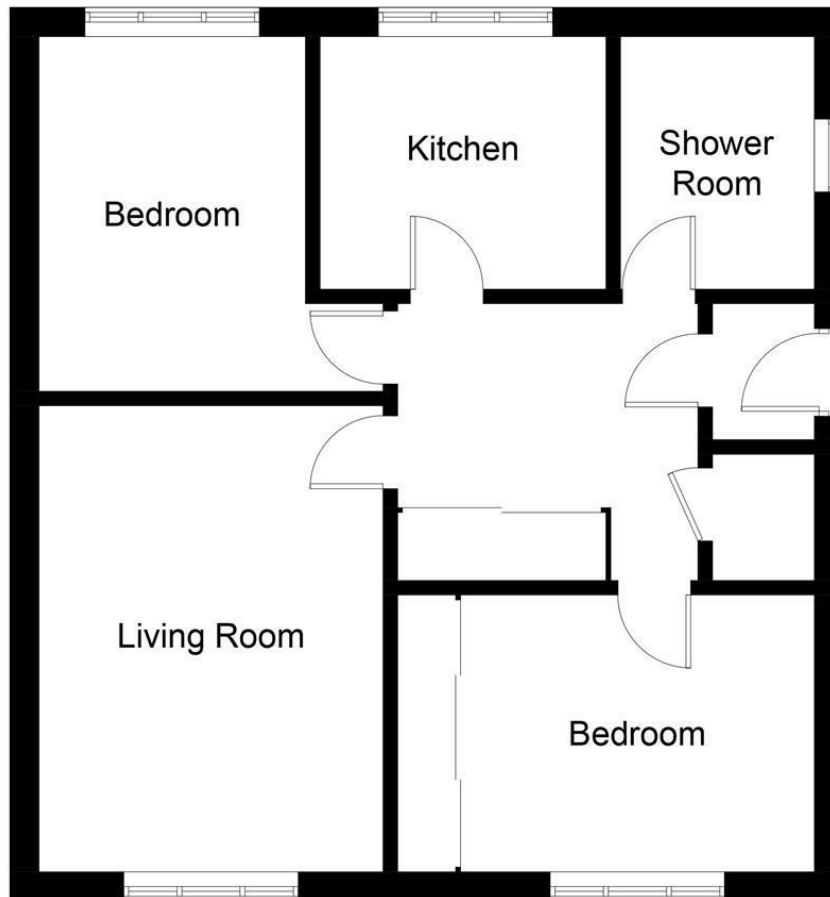


Illustration for identification purposes only, measurements are approximate,  
not to scale. Fourlabs.co © (ID1186190)

## Information

These particulars are prepared on the basis of information provided by our clients. We have not tested the electrical system or any electrical appliances, nor where applicable, any central heating system. All sizes are recorded by electronic tape measurement to give an indicative, approximate size only. Prospective purchasers should make their own enquiries – no warranty is given or implied. This schedule is not intended to, and does not form any contract.

## FREE Valuation

### Selling Your Home?

Choose first for homes - a highly experienced estate agency team you can trust to sell your home at the highest possible price. Offering fantastic savings on selling fees, with no compromise on service, free professional photography highlighting your home in its best light, first for homes will be your first choice. Contact us today to arrange your appointment.



**first for trust**



**first for service**



**first for aftercare**

**first for homes**  
first for property in life - [firstforhomes.co.uk](http://firstforhomes.co.uk)

Contact Allan England's Team  
**01592 752 944**

32 North Street, Glenrothes, Fife KY7 5NA  
Fax: 01592 807947  
[sales@firstforhomes.co.uk](mailto:sales@firstforhomes.co.uk)  
[www.firstforhomes.co.uk](http://www.firstforhomes.co.uk)