

first for homes

first for property in life - firstforhomes.co.uk

Contact Allan England's Team

01592 752 944



Fordell Road, Glenrothes

Offers over £124,000

Fordell Road, Glenrothes

Stunning 3 Bed Mid-Terraced Villa, In The Sought After Area of Cadham, Glenrothes!

Allan England's Award Winning Team at First for Homes are proud to welcome to the market this beautifully presented 3 bedroom mid terraced property in the desirable area of Cadham, Glenrothes. The property comprises; entrance hallway, lounge, beautiful modern kitchen with integrated appliances upgraded in 2022, large double bedroom. There is a stunning one of a kind balustrade taking you to the upper level which comprises of 2 further double bedrooms with built in storage cupboards and family bathroom. The new external doors and windows were installed 2025 and a re-tiled roof done in 2020. Externally there are private easily maintained front and rear garden grounds. Early viewing is highly recommended to fully appreciate what this beautiful family home has to offer! Don't miss out!

EPC - C
Council Tax Band - B
Home Report - £132,000

Call first for homes - first for trust... first for service... first for aftercare.

Glenrothes is regarded as one of the most successful Towns in Scotland with a wealth of local amenities including Kingdom Shopping Centre as well as sport and leisure at Michael Woods and a multi-screen cinema. Glenrothes boasts its very own 18-hole Golf course and both Primary and Secondary schooling are available. For the commuter the A92 allows swift access to Edinburgh and there are railway stations at both Thornton and Markinch.





SITUATION – Glenrothes

ENTANCE HALLWAY

LOUNGE

18'11" x 11'10" (approx) (5.78m x 3.61m (approx))

KITCHEN

16'3" x 11'8" (approx) (4.97m x 3.58m (approx))

BEDROOM 3

8'6" x 7'5" (approx) (2.61m x 2.28m (approx))

STAIRS TO UPPER LEVEL

BEDROOM 1

14'1" x 9'10" (approx) (4.31m x 3.00m (approx))

BEDROOM 2

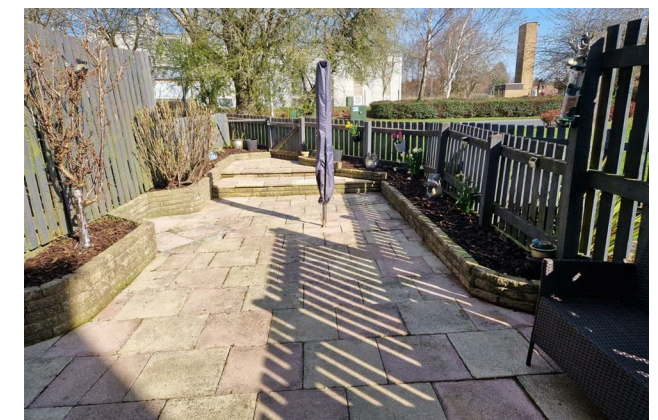
9'6" x 9'3" (approx) (2.91m x 2.83m (approx))

BATHROOM

11'5" x 5'6" (approx) (3.50m x 1.70m (approx))

FRONT AND REAR GARDEN GROUNDS

INFORMATION



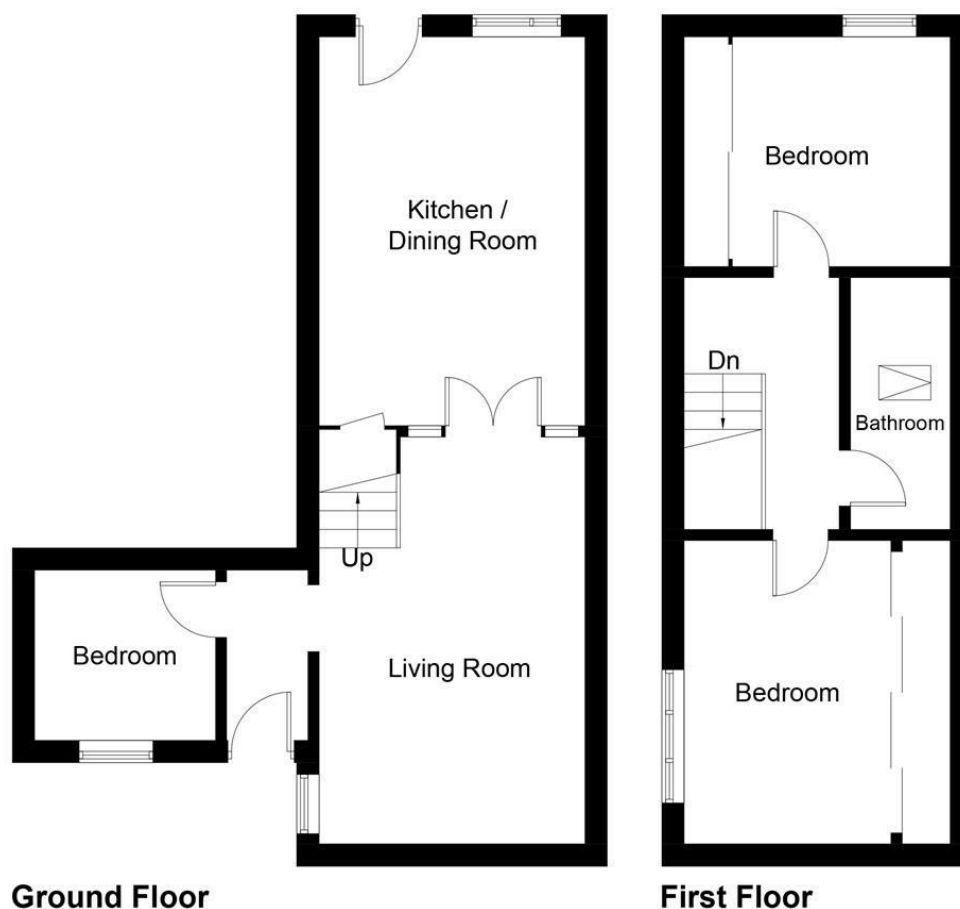


Illustration for identification purposes only, measurements are approximate, not to scale. Fourlabs.co © (ID1182479)

Information

These particulars are prepared on the basis of information provided by our clients. We have not tested the electrical system or any electrical appliances, nor where applicable, any central heating system. All sizes are recorded by electronic tape measurement to give an indicative, approximate size only. Prospective purchasers should make their own enquiries – no warranty is given or implied. This schedule is not intended to, and does not form any contract.

FREE Valuation

Selling Your Home?

Choose first for homes - a highly experienced estate agency team you can trust to sell your home at the highest possible price. Offering fantastic savings on selling fees, with no compromise on service, free professional photography highlighting your home in its best light, first for homes will be your first choice. Contact us today to arrange your appointment.



first for trust



first for service



first for aftercare

first for homes
first for property in life - firstforhomes.co.uk

Contact Allan England's Team
01592 752 944

32 North Street, Glenrothes, Fife KY7 5NA
Fax: 01592 807947
sales@firstforhomes.co.uk
www.firstforhomes.co.uk