

first for homes

first for property in life - firstforhomes.co.uk

Contact Allan England's Team
01592 752 944



Laurel Crescent, Kirkcaldy
Offers over £62,000

Laurel Crescent, Kirkcaldy

Welcome Laurel Crescent located in Kirkcaldy great investment/ first time buy / we present a 2 Bed Upper Apartment in Need of Some Upgrading.

Allan England's award-winning team at first for homes welcome to the market this 2-bed 1st Floor Apartment situated within a popular area of Kirkcaldy. The property is an ideal buy-to let investment or great first time purchase - in need of some upgrading which has been fully reflected in the home report value. The apartment comprises: entrance to 1st floor level, lounge, kitchen, 2 bedrooms and bathroom. Garden grounds to the side and rear. Early viewing advised to ensure you don't miss out!

HOME REPORT VALUE £65,000

EPC RATING C

COUNCIL TAX BAND B

Call first for homes - first for trust... first for service... first for aftercare!

The popular coastal Town of Kirkcaldy has a wide range of services including shopping, banking, schools and a host of recreational facilities such as the stunning Beveridge Park and the Adam Smith Theatre. For the commuter Kirkcaldy boasts a mainline train station and the A92 road link giving access to Edinburgh and all major local towns.





SITUATION - Kirkcaldy

ENTRANCE HALL

FIRST FLOOR LEVEL

LOUNGE 14'10" x 8'4" approx. (4.53m x 2.56m approx.)

KITCHEN 9'3" x 8'4" approx. (2.83m x 2.56m approx.)

BEDROOM 1

11'11"n x 9'10" approx (3.64n x 3.02m approx)

BEDROOM 2

12'2" x 9'2" approx. (3.71m x 2.80m approx.)

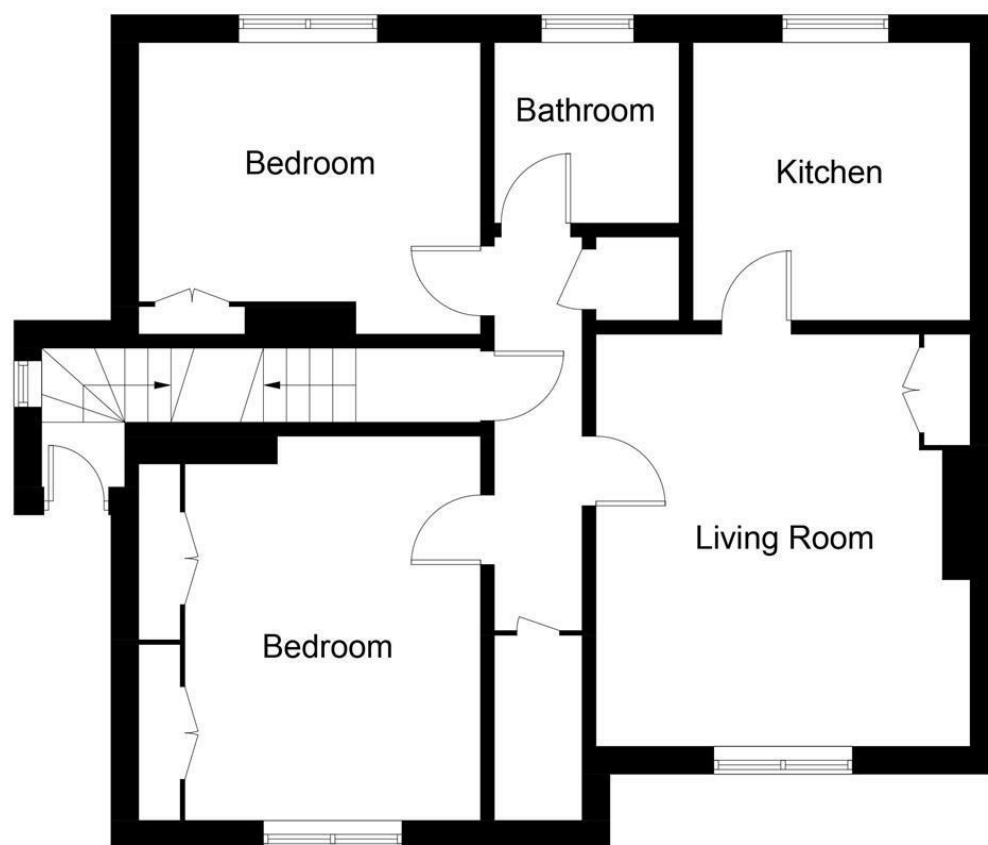
BATHROOM

7'0" x 5'7" approx. (2.14m x 1.72m approx.)

SIDE & REAR GARDEN

INFORMATION





First Floor

Illustration for identification purposes only, measurements are approximate, not to scale. Fourlabs.co © (ID1172624)

Information

These particulars are prepared on the basis of information provided by our clients. We have not tested the electrical system or any electrical appliances, nor where applicable, any central heating system. All sizes are recorded by electronic tape measurement to give an indicative, approximate size only. Prospective purchasers should make their own enquiries – no warranty is given or implied. This schedule is not intended to, and does not form any contract.

FREE Valuation

Selling Your Home?

Choose first for homes - a highly experienced estate agency team you can trust to sell your home at the highest possible price. Offering fantastic savings on selling fees, with no compromise on service, free professional photography highlighting your home in its best light, first for homes will be your first choice. Contact us today to arrange your appointment.



first for trust



first for service



first for aftercare

first for homes
first for property in life - firstforhomes.co.uk

Contact Allan England's Team
01592 752 944

32 North Street, Glenrothes, Fife KY7 5NA
Fax: 01592 807947
sales@firstforhomes.co.uk
www.firstforhomes.co.uk