

first for homes

first for property in life - firstforhomes.co.uk

Contact Allan England's Team

01592 752 944



Craigmead Terrace, Cardenden

Offers over £106,995

Craigmead Terrace, Cardenden

Welcome To Craigmead Terrace- A Spacious 3 Bedroom Semi Detached Family Home, Formally 4 Bed, With Driveway In Popular Area Of Cardenden!

Allan England's multi-award winning team at first for homes welcome to the market this 3 Bedroom Semi Detached Villa situated within the highly sought-after area of Cardenden. The property boasts bright spacious living accommodation internally with entrance hallway, large open plan kitchen/diner, cosy lounge with stone built feature fireplace. Upper level offers a new buyer 3 generous bedrooms and family bathroom. This spacious family home offers front and rear gardens and a driveway providing off street parking for 1 car.

EPC Rating- D
Council Tax Band- B
Home Report Value- £110,000

Call first for homes - first for trust... first for service... first for aftercare.

Cardenden provides local shopping, leisure and primary school facilities. It also boasts hotels, restaurants, sports and leisure facilities and primary and secondary schooling. For the commuter Cardenden is approximately 7 miles from Kirkcaldy Town Centre, it also has its own railway station and the A92 allows swift access to local towns and Edinburgh.





SITUATION - Cardenden

ENTRANCE HALLWAY

LOUNGE

18'0" x 11'0" (approx) (5.50m x 3.36m (approx))

OPEN PLAN KITCHEN/DINER

18'0" x 12'1" (approx) (5.50m x 3.69m (approx))

STAIRS TO UPPER LEVEL

BEDROOM 1

17'3" x 7'10" (approx) (5.27m x 2.41m (approx))

BEDROOM 2

10'11" x 9'11" (approx) (3.33m x 3.03m (approx))

BEDROOM 3

12'0" x 9'0" (approx) (3.68m x 2.75m (approx))

FAMILY BATHROOM

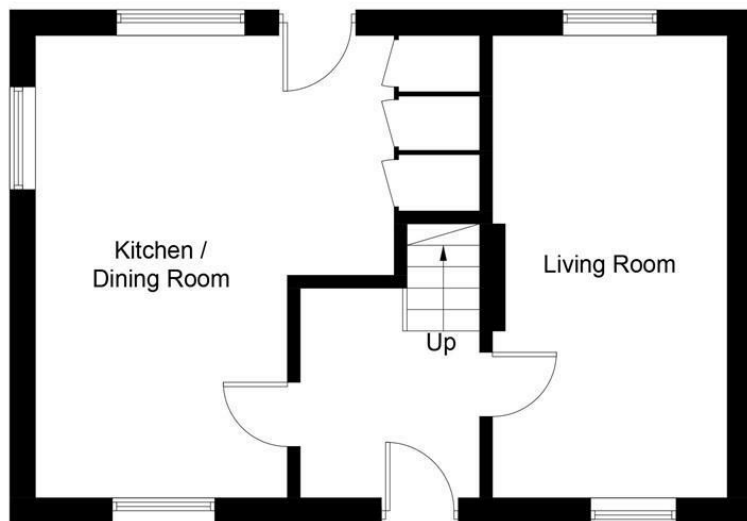
7'2" x 5'8" (approx) (2.20m x 1.73m (approx))

DRIVEWAY

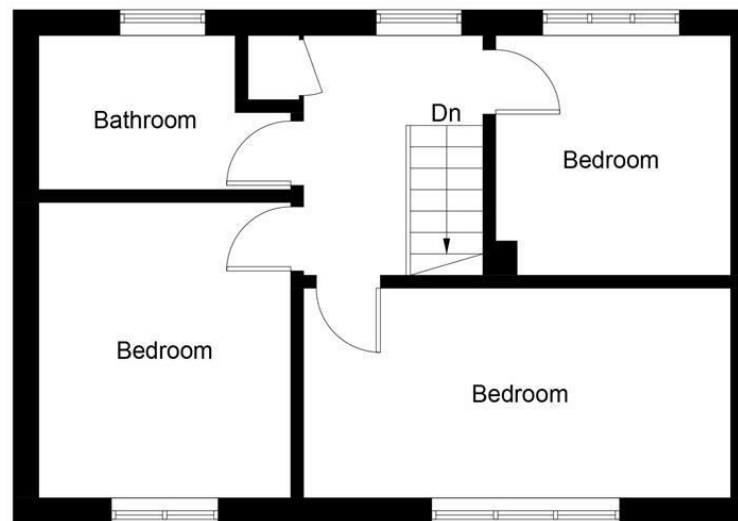
FRONT & REAR GARDENS

INFORMATION





Ground Floor



First Floor

Illustration for identification purposes only, measurements are approximate, not to scale. Fourlabs.co © (ID1168802)

Information

These particulars are prepared on the basis of information provided by our clients. We have not tested the electrical system or any electrical appliances, nor where applicable, any central heating system. All sizes are recorded by electronic tape measurement to give an indicative, approximate size only. Prospective purchasers should make their own enquiries – no warranty is given or implied. This schedule is not intended to, and does not form any contract.

FREE Valuation

Selling Your Home?

Choose first for homes - a highly experienced estate agency team you can trust to sell your home at the highest possible price. Offering fantastic savings on selling fees, with no compromise on service, free professional photography highlighting your home in its best light, first for homes will be your first choice. Contact us today to arrange your appointment.



first for trust



first for service



first for aftercare

first for homes
first for property in life - firstforhomes.co.uk

Contact Allan England's Team
01592 752 944

32 North Street, Glenrothes, Fife KY7 5NA
Fax: 01592 807947
sales@firstforhomes.co.uk
www.firstforhomes.co.uk