

first for homes

first for property in life - firstforhomes.co.uk

Contact Allan England's Team
01592 752 944



Violet Place, Lochgelly

Offers over £328,995

Violet Place, Lochgelly

Welcome to the market an outstanding extended 4-bed luxury Detached Villa Built by Lomond Homes in 2012 situated in a prestigious development in a highly sought after area of Lochgelly!

Allan England's Award Winning Team At First For Homes are delighted to welcome to the market this stunning luxurious 4 bedroom Detached Villa boasting an impressive floor space of 154sqm. Internally, this fantastic family home provides a welcoming entrance hallway, welcoming family lounge with feature media wall, an impressive open-plan kitchen/dining/family room forming the heart of the home and offering the perfect space to entertain with an abundance of natural light and french doors leading to rear garden. Kitchen benefits from a luxurious modern units with ample worktop space, integrated appliances including a NEFF built in oven/microwave, other appliances include integrated fridge freezer, built in dishwasher, instant hot water tap. The property also benefits from a spacious separate utility space, separate cloaks/WC, solid oak finishes to doors/skirtings/facings. Gas Central Heating with Hive installed. Newly fitted composite front door installed in 2024.

The upper level boasts an immaculately presented master bedroom with built-in double wardrobes and luxury en-suite shower room. In addition this family home provides 3 further generously sized double bedrooms. The upper level is completed with a luxury 4-piece family bathroom benefiting from bath tub and separate shower. Externally, this fantastic home provides a single garage, 2 car driveway and a extraordinary landscaped to front and rear garden with patio areas, pergola & manicured lawns for outdoor alfresco dining.

This outstanding property provides a high standard of finishes throughout. A must on your viewing list to appreciate this wonderful home!

EPC Rating - C
Council Tax Band - F
Home Report Value - £340,000

The popular residential area of Lochgelly is convenient for local amenities such as banking, schools, The Lochgelly Centre, golf course and a variety of local shops. For the commuter, it boasts its' own Train Station and the area also benefits from easy access to the A92 giving swift access to all major local Towns and Edinburgh.





SITUATION – Lochgelly

ENTRANCE HALLWAY

LOUNGE

16'3" x 11'10" (approx) (4.97m x 3.62m (approx))

OPEN PLAN KITCHEN/DINER

23'7" x 10'8" (approx) (7.19m x 3.27m (approx))

FAMILY ROOM

11'5" x 9'8" (approx) (3.48m x 2.97m (approx))

UTILITY ROOM

7'7" x 6'7" (approx) (2.33m x 2.02m (approx))

CLOAKROOM W/C

SINGLE GARAGE

20'1" m x 10'5" (approx) (6.14 m x 3.20m (approx))

STAIRS TO UPPER LEVEL

BEDROOM 1

14'5" x 12'10" (approx) (4.40m x 3.92m (approx))

EN-SUITE

7'11" x 4'7" (approx) (2.42m x 1.41m (approx))

BEDROOM 2

16'9" x 10'4" (approx) (5.13m x 3.16m (approx))

BEDROOM 3

9'10" x 9'6" (approx) (3.02m x 2.91m (approx))

BEDROOM 4

9'10" x 9'6" (approx) (3.02m x 2.92m (approx))

4 PIECE FAMILY BATHROOM

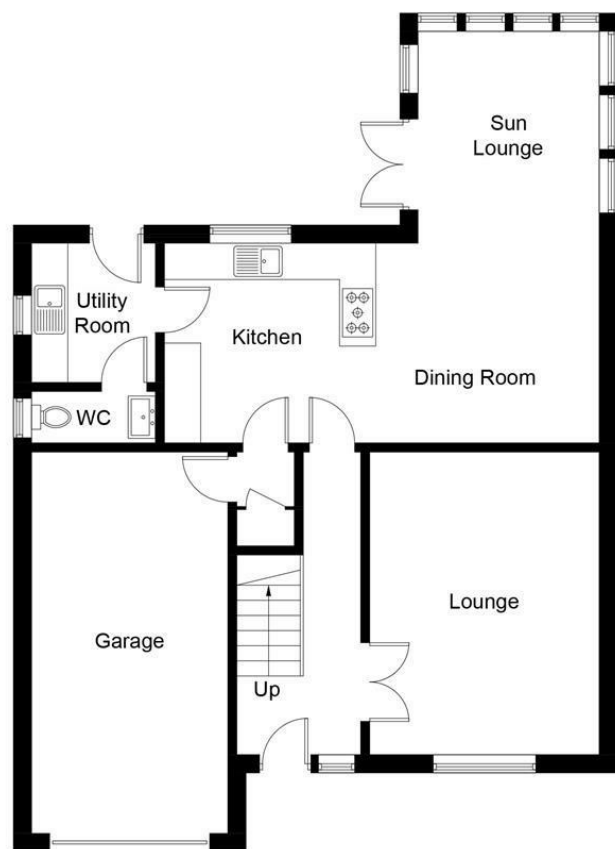
10'5" x 6'11" (approx) (3.18m x 2.13m (approx))

2 CAR DRIVEWAY WITH POTENTIAL TO EXTEND

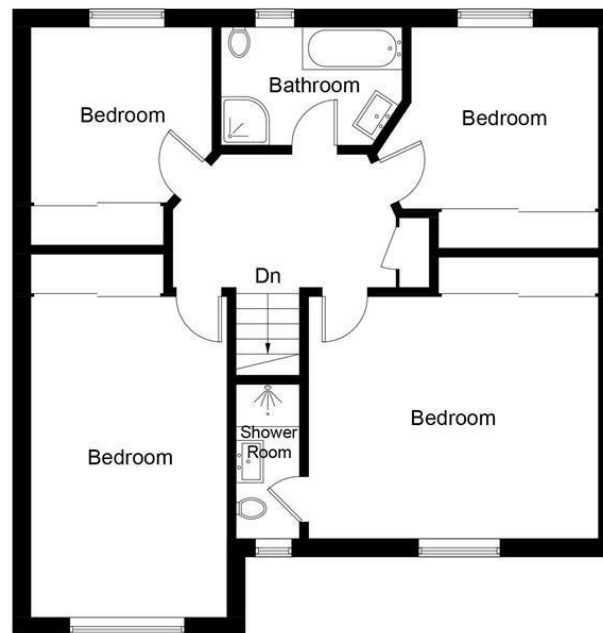
BEAUTIFULLY LANDSCAPED REAR GARDEN GROUNDS

INFORMATION





Ground Floor



First Floor

Illustration for identification purposes only, measurements are approximate, not to scale. Fourlabs.co © (ID1166926)

Information

These particulars are prepared on the basis of information provided by our clients. We have not tested the electrical system or any electrical appliances, nor where applicable, any central heating system. All sizes are recorded by electronic tape measurement to give an indicative, approximate size only. Prospective purchasers should make their own enquiries – no warranty is given or implied. This schedule is not intended to, and does not form any contract.

FREE Valuation

Selling Your Home?

Choose first for homes - a highly experienced estate agency team you can trust to sell your home at the highest possible price. Offering fantastic savings on selling fees, with no compromise on service, free professional photography highlighting your home in its best light, first for homes will be your first choice. Contact us today to arrange your appointment.



first for trust



first for service



first for aftercare

first for homes

first for property in life - firstforhomes.co.uk

Contact Allan England's Team

01592 752 944

32 North Street, Glenrothes, Fife KY7 5NA

Fax: 01592 807947

sales@firstforhomes.co.uk

www.firstforhomes.co.uk