

# first for homes

first for property in life - [firstforhomes.co.uk](http://firstforhomes.co.uk)

Contact Allan England's Team

01592 752 944



Scott Road, Glenrothes

**Offers over £114,995**



# Scott Road, Glenrothes

Welcome to Scott Road, a lovely extended 2 bedroom terraced villa with sunroom extension and 2 car driveway. Situated in the sought after area of South Parks, Glenrothes.

Allan England's Award Wining team at First For Homes are proud to welcome to the market this extended 2 bedroom terraced villa, situated in the sought after area of South Parks, Glenrothes! This fantastic property offers spacious living accommodation, the ground floor comprises of: entrance hallway, bright lounge/dining room, solid oak doors providing access to the sunroom with double patio doors leading to the rear garden and a well-appointed kitchen. The upper level comprises of 2 generous bedrooms offering built-in wardrobes and a family bathroom. Externally the property offers an easily maintained rear garden with fence surround and a front driveway for 2 cars. Early viewing is highly recommended! Don't miss out!

Home Report Value - £120,000

EPC Rating - C

Council Tax Band - B

Call first for homes - first for trust... first for service... first for aftercare!

Glenrothes is regarded as one of the most successful Towns in Scotland with a wealth of local amenities including Kingdom Shopping Centre as well as sport and leisure at Michael Woods and a multi-screen cinema. Glenrothes boasts its very own 18-hole Golf course and both Primary and Secondary schooling are available. For the commuter the A92 allows swift access to Edinburgh and there are railway stations at both Thornton and Markinch.







## SITUATION – Glenrothes

### ENTRANCE HALLWAY

### LOUNGE

19'4" x 9'10" (approx) (5.90m x 3.00m (approx))

### DINING ROOM

11'2" x 8'5" (approx) (3.42m x 2.58m (approx))

KITCHEN 9'5" x 7'7" (approx) (2.88m x 2.33m (approx))

### STAIRS TO UPPER LEVEL

### BEDROOM 1

12'9" x 8'7" (approx) (3.90m x 2.62m (approx))

### BEDROOM 2

11'5" x 8'8" (approx) (3.48m x 2.66m (approx))

### FAMILY BATHROOM

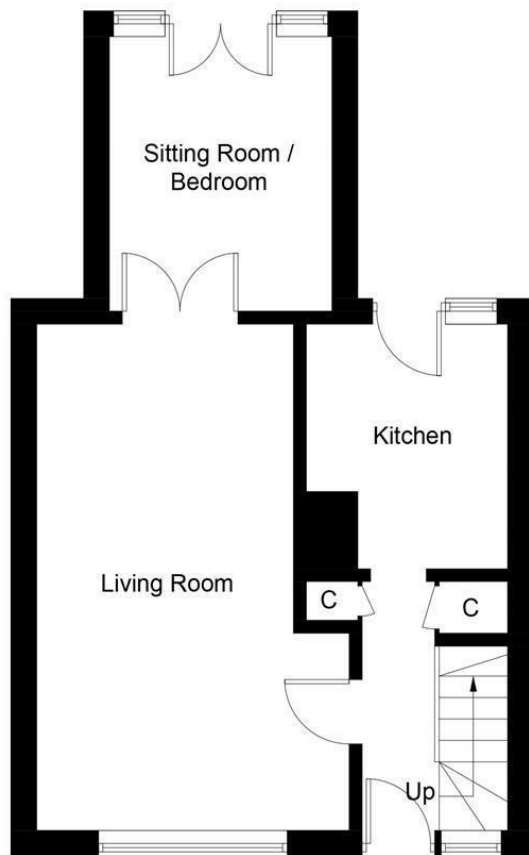
### 2 CAR DRIVEWAY

### FRONT & REAR GARDEN

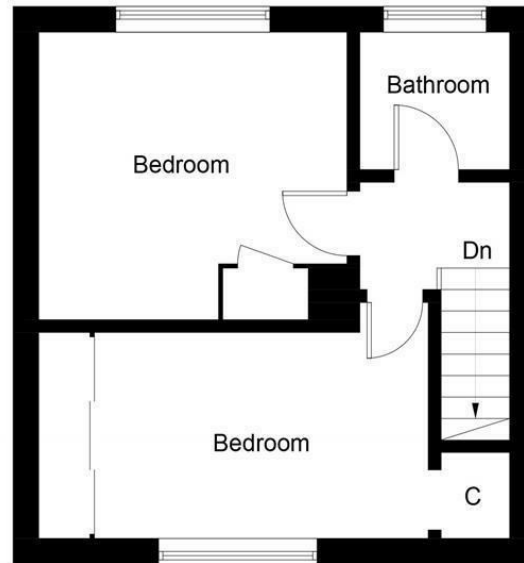
### INFORMATION







**Ground Floor**



**First Floor**

Illustration for identification purposes only, measurements are approximate, not to scale. floorplansUsketch.com © (ID1013944)

## Information

These particulars are prepared on the basis of information provided by our clients. We have not tested the electrical system or any electrical appliances, nor where applicable, any central heating system. All sizes are recorded by electronic tape measurement to give an indicative, approximate size only. Prospective purchasers should make their own enquiries – no warranty is given or implied. This schedule is not intended to, and does not form any contract.

## FREE Valuation

### Selling Your Home?

Choose first for homes - a highly experienced estate agency team you can trust to sell your home at the highest possible price. Offering fantastic savings on selling fees, with no compromise on service, free professional photography highlighting your home in its best light, first for homes will be your first choice. Contact us today to arrange your appointment.



**first for trust**



**first for service**



**first for aftercare**

**first for homes**  
first for property in life - firstforhomes.co.uk

Contact Allan England's Team  
**01592 752 944**

32 North Street, Glenrothes, Fife KY7 5NA  
Fax: 01592 807947  
sales@firstforhomes.co.uk  
www.firstforhomes.co.uk