

first for homes

first for property in life - [firstforhomes.co.uk](https://www.firstforhomes.co.uk)

Contact Allan England's Team

01592 752 944



Warout Road, Glenrothes

Offers over £106,995

Warout Road, Glenrothes

Beautifully presented 2 bedroom end terraced villa situated in a popular area of Glenrothes, Fife! Within close proximity to the Kingdom Shopping Centre & Glenrothes Bus Station, this central location is ideal for all the family!

Allan England's Award-Winning Team at First For Homes are proud to welcome to the market this lovely 2-bedroom end terraced villa situated within the sought-after area of Warout, Glenrothes! This bright & spacious home comprises on the ground floor: entrance hallway, generous size lounge/dining area for the family to enjoy together, well-appointed kitchen with access to rear garden grounds. The upper level offers 2 bedrooms, with the first bedroom providing built-in storage cupboard and lovely views of the park, the second bedroom also provides built-in wardrobes. The upper level is completed with a modern family shower room and access to attic space. Externally this fantastic property benefits from front and rear low maintenance garden grounds, the rear offering a lovely patio area for sitting & entertaining. There is the potential to add a driveway to the front (subject to planning consents) Viewing is essential to fully appreciate all this stunning home has to offer. Don't miss out!

HOME REPORT - £112,000

EPC - C

COUNCIL TAX - B

Call first for homes - First for trust... first for service... first for aftercare.

Glenrothes is regarded as one of the most successful Towns in Scotland with a wealth of local amenities including Kingdom Shopping Centre as well as sport and leisure at Michael Woods and a multi-screen cinema. Glenrothes boasts its very own 18-hole Golf course and both Primary and Secondary schooling are available. For the commuter the A92 allows swift access to Edinburgh and there are railway stations at both Thornton and Markinch.





SITUATION – Glenrothes

ENTRANCE HALLWAY

LOUNGE / DINER

19'4" x 11'3" approx (5.90m x 3.43m approx)

KITCHEN 9'7" x 7'8" approx (2.93m x 2.35m approx)

STAIRS TO THE UPPER LEVEL

BEDROOM 1

14'9" x 8'7" approx (4.52m x 2.64m approx)

BEDROOM 2

11'4" x 8'10" approx (3.46m x 2.71m approx)

SHOWER ROOM

6'5" x 5'5" approx (1.96m x 1.66m approx)

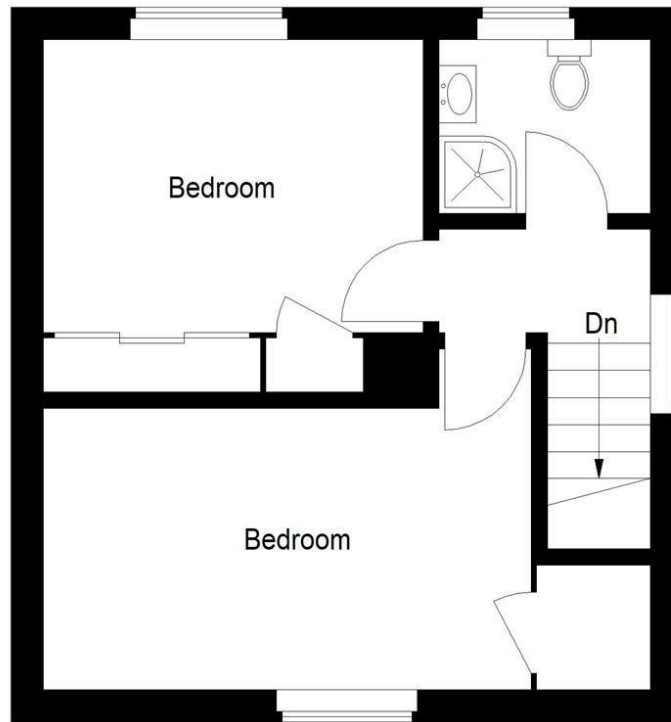
FRONT & REAR GARDEN GROUNDS

INFORMATION





Ground Floor



First Floor

Illustration for identification purposes only, measurements are approximate, not to scale. floorplansUsketch.com © (ID1128992)

Information

These particulars are prepared on the basis of information provided by our clients. We have not tested the electrical system or any electrical appliances, nor where applicable, any central heating system. All sizes are recorded by electronic tape measurement to give an indicative, approximate size only. Prospective purchasers should make their own enquiries – no warranty is given or implied. This schedule is not intended to, and does not form any contract.

FREE Valuation

Selling Your Home?

Choose first for homes - a highly experienced estate agency team you can trust to sell your home at the highest possible price. Offering fantastic savings on selling fees, with no compromise on service, free professional photography highlighting your home in its best light, first for homes will be your first choice. Contact us today to arrange your appointment.



first for trust



first for service



first for aftercare

first for homes
 first for property in life - firstforhomes.co.uk

Contact Allan England's Team
01592 752 944

32 North Street, Glenrothes, Fife KY7 5NA
 Fax: 01592 807947
 sales@firstforhomes.co.uk
 www.firstforhomes.co.uk