

first for homes

first for property in life - [firstforhomes.co.uk](https://www.firstforhomes.co.uk)

Contact Allan England's Team

01592 752 944



Ramsay Gardens, Leslie

Offers over £177,000

Ramsay Gardens, Leslie

Set in a Quiet Cul-de-Sac in the Sought After Village of Leslie, Fife, Welcome to Ramsay Gardens, A Lovely, Quaint 3-Bedroom Semi-Detached Bungalow With Garage, 3 Car Driveway & Substantial Workshop!

Allan England's Team at first for homes welcome to the market this Move In Condition 3-Bedroom Semi-Detached Bungalow situated within a quiet cul-de-sac setting in the sought-after Village of Leslie.

Offering bright and spacious living accommodation all on one level with entrance hallway, generous family lounge, modern kitchen with built in oven and induction hob, 3 bedrooms, one of which is currently serving as a dining room, built in storage, walk in shower room and Worcester boiler. Externally the property has the luxury of landscaped gardens to the front & rear with a substantial workshop and mature trees, a single garage with up and over door, power & lighting and a 3 car driveway to the front. The property boasts lovely views towards the surrounding countryside making this semi rural location the ideal home for those who like to get out of the hustle and bustle of a busy town.

EPC Rating- C
Council Tax Band- D
Home Report Value- £185,000

Call Allan England's Team at first for homes – first for trust... first for service... first for aftercare.

Leslie provides a range of local amenities including shops, restaurants and Primary School. Leslie is adjacent to Glenrothes which is regarded as one of the most successful Towns in Scotland with a wealth of local amenities including Kingdom Shopping Centre as well as sport and leisure at Michael Woods. Glenrothes boasts its very own 18-hole Golf course and both Primary and Secondary schooling are available. For the commuter the A92 allows swift access to Edinburgh and there are railway stations at both Thornton and Markinch.





SITUATION - Leslie

ENTRANCE HALLWAY

LOUNGE

15'7" x 13'4" (approx) (4.77m x 4.07m (approx))

KITCHEN

11'2" x 9'0" (approx) (3.42m x 2.75m (approx))

BEDROOM 1

14'6" x 8'11" (approx) (4.42m x 2.73m (approx))

BEDROOM 2

11'10" x 10'4" (approx) (3.61m x 3.16m (approx))

BEDROOM 3

10'4" x 6'9" (approx) (3.16m x 2.08m (approx))

SHOWER ROOM

8'0" x 5'7" (approx) (2.44m x 1.71m (approx))

SINGLE GARAGE

18'7" x 10'2" (approx at widest point) (5.67m x 3.10m (approx at widest point))

3 CAR DRIVEWAY

FRONT & REAR GARDENS

WORKSHOP

INFORMATION



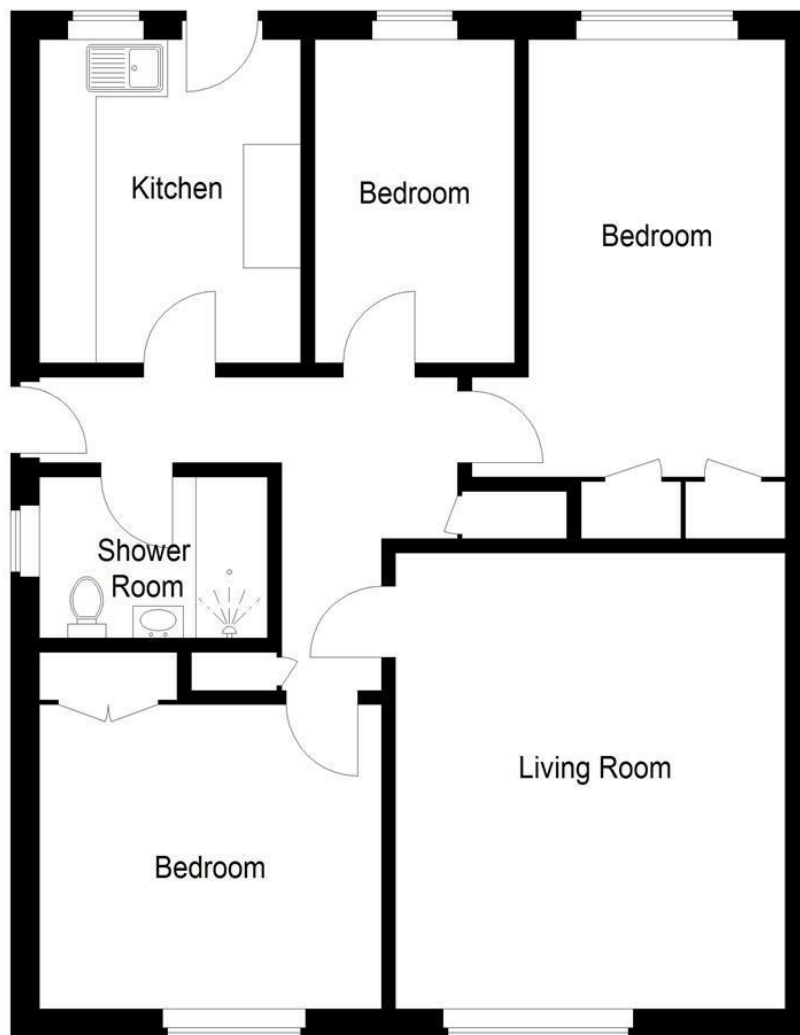


Illustration for identification purposes only, measurements are approximate, not to scale. floorplansUsketch.com © (ID1128476)

first for homes
first for property in life - firstforhomes.co.uk

Contact Allan England's Team
01592 752 944

Information

These particulars are prepared on the basis of information provided by our clients. We have not tested the electrical system or any electrical appliances, nor where applicable, any central heating system. All sizes are recorded by electronic tape measurement to give an indicative, approximate size only. Prospective purchasers should make their own enquiries – no warranty is given or implied. This schedule is not intended to, and does not form any contract.

FREE Valuation

Selling Your Home?

Choose first for homes - a highly experienced estate agency team you can trust to sell your home at the highest possible price. Offering fantastic savings on selling fees, with no compromise on service, free professional photography highlighting your home in its best light, first for homes will be your first choice. Contact us today to arrange your appointment.



first for trust



first for service



first for aftercare

32 North Street, Glenrothes, Fife KY7 5NA
Fax: 01592 807947
sales@firstforhomes.co.uk
www.firstforhomes.co.uk