

first for homes

first for property in life - [firstforhomes.co.uk](https://www.firstforhomes.co.uk)

Contact Allan England's Team

01592 752 944



Lochty Park, Lochgelly

Offers over £249,995

Lochty Park, Lochgelly

Wow! - Stunning, Modern & Sophisticated 4 Bedroom Detached Family Home Situated In The Popular Village of Kinglassie!

Allan England's award winning team at First For Homes welcome to the market this stunning 4 bedroom detached villa situated within the desirable village of Kinglassie. Boasting a modern open-plan kitchen/diner and 2 spacious reception rooms, this stunning home is perfect for entertaining guests or simply relaxing with your family. Comprising 4 bedrooms, 3 bathrooms and a cloaks/WC, there is ample space for your growing family. Unique features include a beautiful log burner, ideal for cosy evenings during the colder months, and solid Oak flooring that adds a touch of elegance to the space. With parking available for up to 3 vehicles between the 2-car driveway and single garage, you'll never have to worry about finding a spot for your car.

Don't miss out on the opportunity to make this house your home. Book a viewing today and step into the lifestyle you've always desired.

HOME REPORT VALUE - £265,000

EPC RATING - C

COUNCIL TAX BAND - F

Call first for homes - first for trust... first for service... first for aftercare!

Kinglassie is a popular residential area with a wealth of amenities including local shopping and primary school whilst only being a few miles from Kirkcaldy and Glenrothes which boast the level of services you would expect from larger towns. For the commuter the A92 is close by allowing easy access to Edinburgh and all major local towns.





SITUATION - Kinglassie

ENTRANCE HALLWAY

LOUNGE

18'3" x 11'2" (approx) (5.58m x 3.42m (approx))

DINING ROOM

10'0" x 9'7" (approx) (3.06m x 2.93m (approx))

KITCHEN

17'3" x 10'1" (approx) (5.28m x 3.08m (approx))

WC/CLOAKS

STAIRS TO UPPER LEVEL

MASTER BEDROOM 1

13'6" x 11'4" (approx) (4.12m x 3.47m (approx))

MASTER EN-SUITE

BEDROOM 2

12'1" x 9'10" (approx) (3.70m x 3.00m (approx))

BEDROOM 3

11'8" x 8'7" (approx) (3.58m x 2.62m (approx))

JACK & JILL EN-SUITE

BEDROOM 4

10'6" x 8'10" (approx) (3.21m x 2.70m (approx))

FAMILY BATHROOM

7'4" x 7'1" (approx) (2.24m x 2.18m (approx))

2 CAR DRIVEWAY

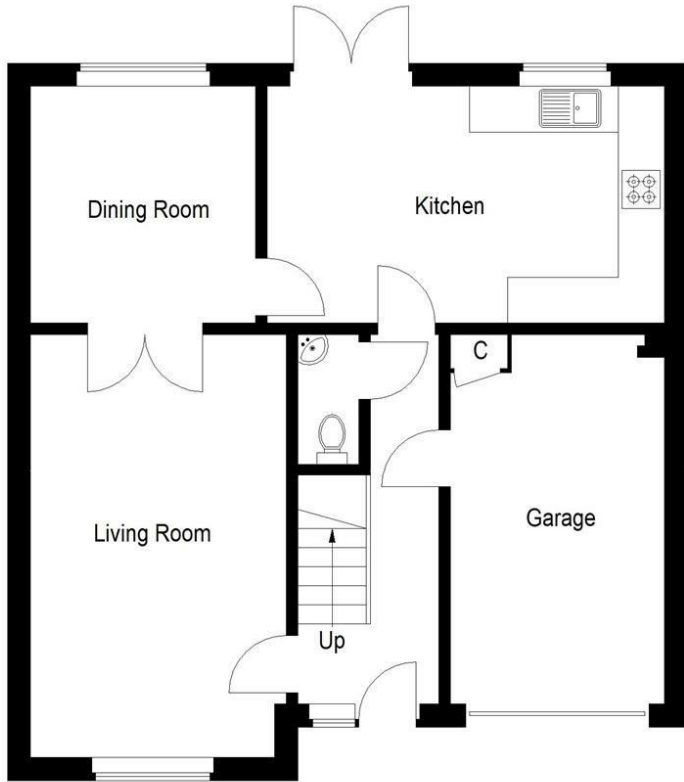
SINGLE GARAGE

15'11" x 8'7" (approx) (4.86m x 2.64m (approx))

FRONT & REAR LANDSCAPED GARDENS

INFORMATION





Ground Floor



First Floor

Illustration for identification purposes only, measurements are approximate, not to scale. floorplansUsketch.com © (ID1118447)

Information

These particulars are prepared on the basis of information provided by our clients. We have not tested the electrical system or any electrical appliances, nor where applicable, any central heating system. All sizes are recorded by electronic tape measurement to give an indicative, approximate size only. Prospective purchasers should make their own enquiries – no warranty is given or implied. This schedule is not intended to, and does not form any contract.

FREE Valuation

Selling Your Home?

Choose first for homes - a highly experienced estate agency team you can trust to sell your home at the highest possible price. Offering fantastic savings on selling fees, with no compromise on service, free professional photography highlighting your home in its best light, first for homes will be your first choice. Contact us today to arrange your appointment.



first for trust



first for service



first for aftercare

first for homes
first for property in life - firstforhomes.co.uk

Contact Allan England's Team
01592 752 944

32 North Street, Glenrothes, Fife KY7 5NA
Fax: 01592 807947
sales@firstforhomes.co.uk
www.firstforhomes.co.uk