

first for homes

first for property in life - [firstforhomes.co.uk](https://www.firstforhomes.co.uk)

Contact Allan England's Team

01592 752 944



Fyvie Green, Glenrothes

Offers over £124,995

Fyvie Green, Glenrothes

Lovely Bright And Spacious 4-Bedroom Terraced Villa Situated Within The Desirable Area Of Stenton, Glenrothes!

Allan England's award-winning team at First For Homes are proud to welcome to the market this bright and spacious 4 bedroom terraced family villa situated within the desirable area of Stenton, Glenrothes. The property offers versatile family living accommodation comprising of: entrance hallway, open plan lounge/diner/kitchen, downstairs wc/cloaks, large storage cupboard housing the boiler. The upper level comprises of 4 bedrooms, family bathroom and access to attic space. Externally there are garden grounds to the front and rear. Early viewing is highly recommended to ensure you don't miss out.

HOME REPORT VALUE - £130,000
EPC RATING - D
COUNCIL TAX BAND - C

Call first for homes - first for trust... first for service... first for aftercare!

Glenrothes is regarded as one of the most successful Towns in Scotland with a wealth of local amenities including Kingdom Shopping Centre as well as sport and leisure at Michael Woods and a multi-screen cinema. Glenrothes boasts its very own 18-hole Golf course and both Primary and Secondary schooling are available. For the commuter the A92 allows swift access to Edinburgh and there are railway stations at both Thornton and Markinch.

- Spacious 4 Bedroom Terraced Villa
- Situated In The Sought After Area Of Stenton, Glenrothes
- Open Plan Kitchen/Diner/Lounge
- 4 Bedrooms
- Family Bathroom
- Front And Rear Garden Grounds
- Early Viewing Recommended
- Home Report Value - £130,000
- EPC Rating - D
- Council Tax Band - C





SITUATION – Glenrothes

ENTRANCE HALLWAY

OPEN PLAN KITCHEN/DINER/LOUNGE

24'4" x 21'5" approx (7.43m x 6.54m approx)

WC/CLOAKS

STAIRS TO UPPER LEVEL

BEDROOM 1

14'5" x 10'6" approx (4.40m x 3.22m approx)

BEDROOM 2

12'4" x 10'9" approx (3.77m x 3.28m approx)

BEDROOM 3

12'0" x 10'8" approx (3.68m x 3.26m approx)

BEDROOM 4

11'8" x 7'3" approx (3.57m x 2.22m approx)

FAMILY BATHROOM

9'8" x 4'7" approx (2.95m x 1.41m approx)

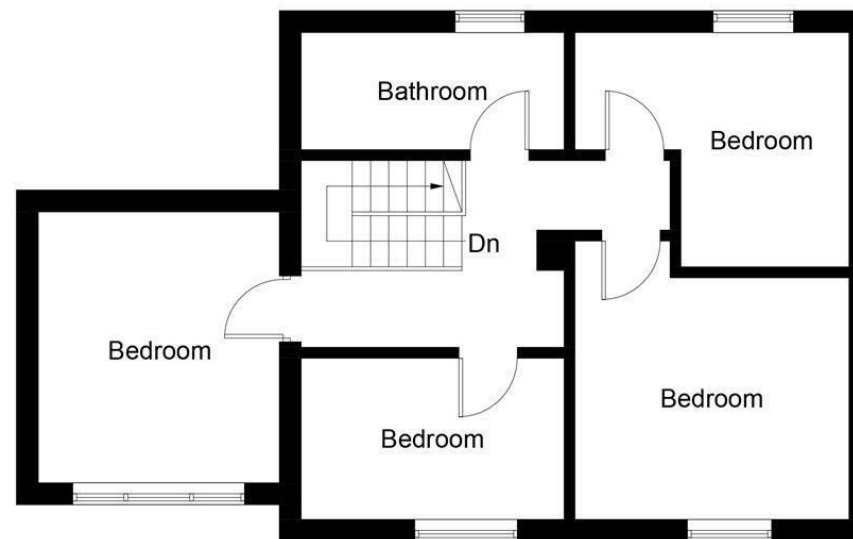
FRONT AND REAR GARDEN GROUNDS

INFORMATION





Ground Floor



First Floor

Illustration for identification purposes only, measurements are approximate, not to scale. floorplansUsketch.com © (ID477089)



Contact Allan England's Team
01592 752 944

Information

These particulars are prepared on the basis of information provided by our clients. We have not tested the electrical system or any electrical appliances, nor where applicable, any central heating system. All sizes are recorded by electronic tape measurement to give an indicative, approximate size only. Prospective purchasers should make their own enquiries – no warranty is given or implied. This schedule is not intended to, and does not form any contract.

FREE Valuation

Selling Your Home?

Choose first for homes - a highly experienced estate agency team you can trust to sell your home at the highest possible price. Offering fantastic savings on selling fees, with no compromise on service, free professional photography highlighting your home in its best light, first for homes will be your first choice. Contact us today to arrange your appointment.



first for trust



first for service



first for aftercare

32 North Street, Glenrothes, Fife KY7 5NA
Fax: 01592 807947
sales@firstforhomes.co.uk
www.firstforhomes.co.uk