

first for homes

first for property in life - [firstforhomes.co.uk](https://www.firstforhomes.co.uk)

Contact Allan England's Team

01592 752 944



Maree Way, Glenrothes

Offers over £349,995

Maree Way, Glenrothes

Lovely Detached Family Villa - 5 Bedrooms, 2 Public Rooms, Beautifully Landscaped South Facing Rear Gardens, Driveway for 6/7 Cars, Single Garage. Situated Within The Highly Desirable Area Of Pitcairn, Glenrothes (Size 189m²)

Allan England's Award Winning Team at First For Homes are Proud to Welcome to the Market this Lovely Well Presented 5 Bedroom, 2 Public Room Detached Family Villa Situated in Pitcairn, Glenrothes. The property offers versatile family living accommodation comprising on the ground floor level: entrance hallway, large family lounge with patio doors leading out to the beautifully landscaped rear garden ground, spacious dining room/family room, breakfasting kitchen, separate utility room, bedroom 5/family room and cloaks/WC. The upper level offers master bedroom with walk-in dressing area with fitted mirrored wardrobes and stunning en-suite shower room (updated January 2023 with underfloor heating installed), 3 further double bedrooms and luxurious 4-piece bathroom suite (updated January 2023 with under floor heating installed and also luxury "Carronite bath fitted")

Externally, there are lovely landscaped garden grounds to the front and side and sunny South-facing rear gardens with vegetable patch, space for greenhouse, space for shed, treeline outlook to the rear. Driveway for 6-7 cars and single garage with up-and-over door and power and lighting. Early viewing is highly recommended to ensure you don't miss out!

EPC RATING C
COUNCIL TAX BAND G

Call first for homes - first for trust... first for service... first for aftercare!

Glenrothes is regarded as one of the most successful Towns in Scotland with a wealth of local amenities including Kingdom Shopping Centre as well as sport and leisure at Michael Woods and a multi-screen cinema. Glenrothes boasts its very own 18-hole Golf course and both Primary and Secondary schooling are available. For the commuter the A92 allows swift access to Edinburgh and there are railway stations at both Thornton and Markinch.

- Well Presented 5 Bedroom Detached Family Villa (189m²)
- Situated In The Desirable Area Of Pitcairn, Glenrothes
- Versatile Family Home!
- Master Bedroom - Walk-In Dressing Area With Built-In Wardrobes & Stunning En-Suite Shower Room
- Newly Installed 4-Piece Family Bathroom Suite, En-suite & Cloaks/WC with Underfloor Heating
- Stunning South-Facing Landscaped Rear Garden Grounds
- 6-7 Car Driveway & Single Garage
- Early Viewing Recommended
- EPC RATING - C
- COUNCIL TAX BAND - G





SITUATION – Glenrothes

ENTRANCE VESTIBULE

HALLWAY

BEDROOM 5 / FAMILY ROOM

13'6" x 12'5" approx. (4.12m x 3.80m approx.)

DINING ROOM

15'11" x 12'6" approx. (4.87m x 3.82m approx.)

CLOAKS / WC

BREAKFASTING KITCHEN

13'8" x 12'5" approx. (4.18m x 3.81m approx.)

UTILITY ROOM

8'3" x 5'7" approx. (2.52m x 1.72m approx.)

MAIN LOUNGE 19'8" x 12'5" approx. (6m x 3.81m approx.)

UPPER LEVEL

MASTER BEDROOM

13'9" x 12'5" approx. (4.20m x 3.80m approx.)

WALK-IN WARDROBES

10'2" x 7'2" approx. (3.12m x 2.20m approx.)

EN-SUITE SHOWER ROOM WITH UNDERFLOOR HEATING

11'5" x 7'6" approx. (3.50m x 2.30m approx.)

BEDROOM 2

12'5" x 12'6" approx. (3.80m x 3.82m approx.)

BEDROOM 3

11'9" x 8'11" approx. (3.60m x 2.74m approx.)

BEDROOM 4

12'6" x 8'11" approx. (3.82m x 2.74m approx.)

4-PIECE FAMILY BATHROOM SUITE WITH UNDERFLOOR HEAT

12'4" x 7'5" approx. (3.78m x 2.27m approx.)

SINGLE GARAGE

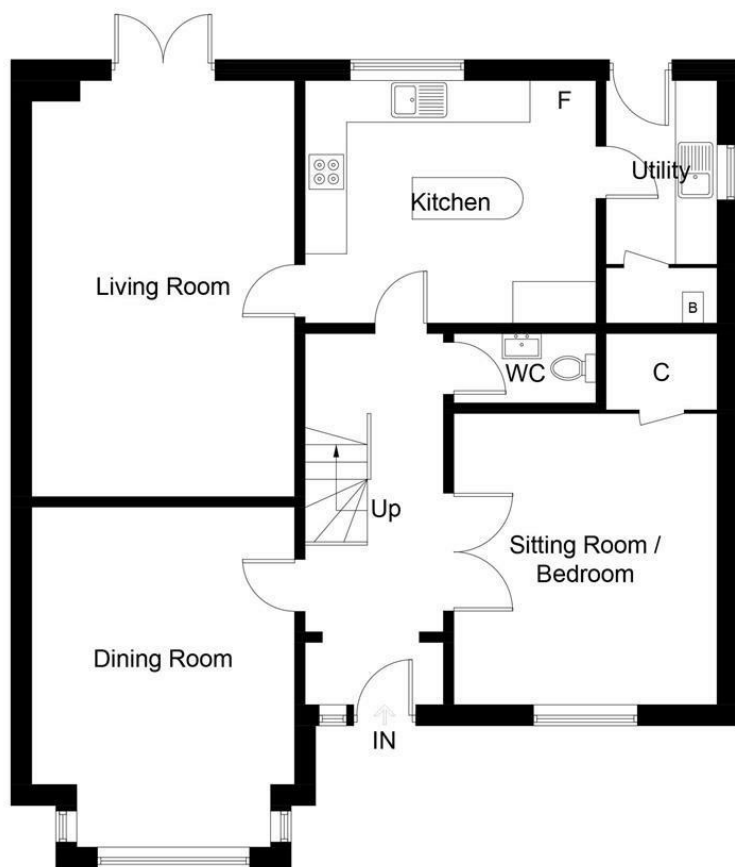
16'11" x 9'8" approx. (5.16m x 2.97m approx.)

6-7 CAR DRIVEWAY

GARDEN GROUNDS (South-Facing Rear Gardens)

INFORMATION





Ground Floor



First Floor

Illustration for identification purposes only, measurements are approximate, not to scale. floorplansUsketch.com © (ID1088324)

Information

These particulars are prepared on the basis of information provided by our clients. We have not tested the electrical system or any electrical appliances, nor where applicable, any central heating system. All sizes are recorded by electronic tape measurement to give an indicative, approximate size only. Prospective purchasers should make their own enquiries – no warranty is given or implied. This schedule is not intended to, and does not form any contract.

FREE Valuation

Selling Your Home?

Choose first for homes - a highly experienced estate agency team you can trust to sell your home at the highest possible price. Offering fantastic savings on selling fees, with no compromise on service, free professional photography highlighting your home in its best light, first for homes will be your first choice. Contact us today to arrange your appointment.



first for trust



first for service



first for aftercare

first for homes

first for property in life - firstforhomes.co.uk

Contact Allan England's Team

01592 752 944

32 North Street, Glenrothes, Fife KY7 5NA

Fax: 01592 807947

sales@firstforhomes.co.uk

www.firstforhomes.co.uk