

first for homes

first for property in life - [firstforhomes.co.uk](https://www.firstforhomes.co.uk)

Contact Allan England's Team

01592 752 944



Dunlin Avenue, Glenrothes
Offers over £94,995

Dunlin Avenue, Glenrothes

Ideal First Time Buy or Buy-To-Let Investment. Welcoming 2 Bed Terraced Villa with Parking In The Sought After Area Of Collydean, Glenrothes!

Allan England's Team at First For Homes are proud to welcome to the market this bright and spacious 2-bedroom Terraced Villa set within a highly desirable area of Collydean, Glenrothes. This spacious property comprises: lounge/diner, kitchen, 2 bedrooms and family bathroom. Externally there are spacious garden grounds to the rear and a driveway to the front with space for 1 car. The property offers versatile living accommodation for a family or great investment opportunity. Viewing is essential to see the potential this fantastic home has to offer! Don't Miss Out

Home Report Value £100,00
EPC Rating - D
Council Tax Band - A

Don't miss out, call First For Homes - first for trust... first for service... first for aftercare.

SITUATION

Glenrothes is regarded as one of the most successful Towns in Scotland with a wealth of local amenities including Kingdom Shopping Centre as well as sport and leisure at Michael Woods and a multi-screen cinema. Glenrothes boasts its very own 18-hole Golf course and both Primary and Secondary schooling are available. Edinburgh commuter the A92 allows swift access to Edinburgh and there are railway stations at both Thornton and Markinch.

- 2 Bedroom Terraced Villa
- Popular Area of Collydean
- 2 Double Bedrooms
- 1 Car Driveway to Front

- Private Rear Gardens
- Ideal Investment Opportunity
- HOME REPORT - £100,000
- EPC - D
- COUNCIL TAX - A





SITUATION – Glenrothes

ENTRANCE HALLWAY

LOUNGE/DINER

17'8" x 11'0" approx (5.41m x 3.37m approx)

KITCHEN 11'9" x 9'10" approx (3.60m x 3.01m approx)

STAIRS TO UPPER LEVEL

BEDROOM 1

17'8" x 11'2" approx (5.40m x 3.41m approx)

BEDROOM 2

11'10" x 10'0" approx (3.62m x 3.05m approx)

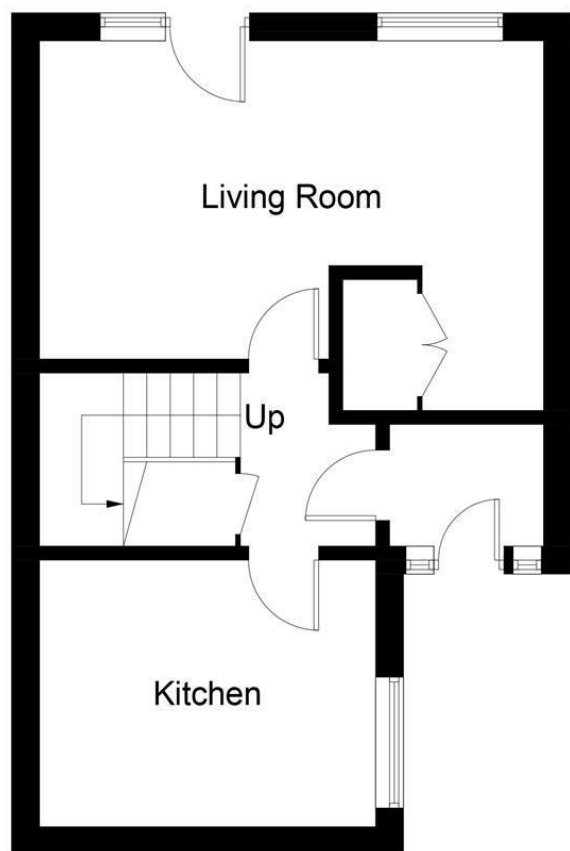
FAMILY BATHROOM

REAR GARDEN

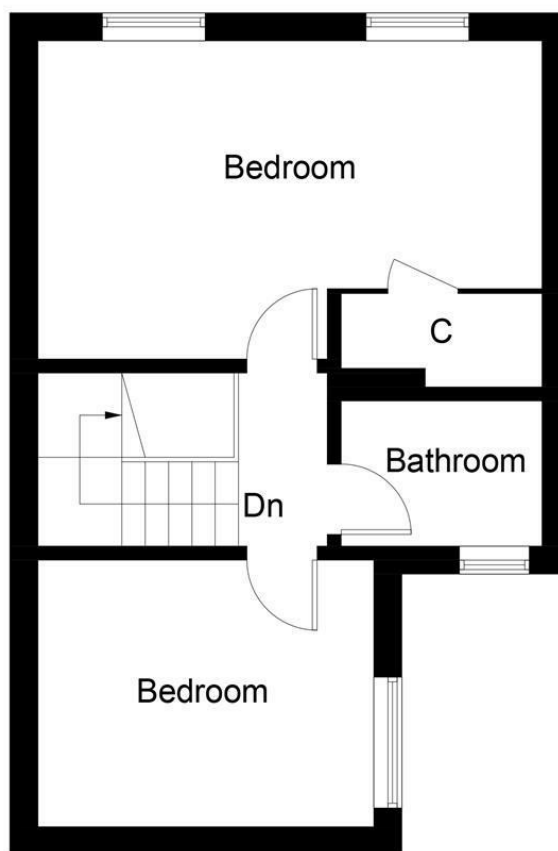
DRIVEWAY TO FRONT

INFORMATION





Ground Floor



First Floor

Illustration for identification purposes only, measurements are approximate, not to scale. floorplansUsketch.com © (ID1069453)

Information

These particulars are prepared on the basis of information provided by our clients. We have not tested the electrical system or any electrical appliances, nor where applicable, any central heating system. All sizes are recorded by electronic tape measurement to give an indicative, approximate size only. Prospective purchasers should make their own enquiries – no warranty is given or implied. This schedule is not intended to, and does not form any contract.

FREE Valuation

Selling Your Home?

Choose first for homes - a highly experienced estate agency team you can trust to sell your home at the highest possible price. Offering fantastic savings on selling fees, with no compromise on service, free professional photography highlighting your home in its best light, first for homes will be your first choice. Contact us today to arrange your appointment.



first for trust



first for service



first for aftercare

first for homes

first for property in life - firstforhomes.co.uk

Contact Allan England's Team

01592 752 944

32 North Street, Glenrothes, Fife KY7 5NA

Fax: 01592 807947

sales@firstforhomes.co.uk

www.firstforhomes.co.uk