

first for homes

first for property in life - [firstforhomes.co.uk](https://www.firstforhomes.co.uk)

Contact Allan England's Team

01592 752 944



Castle Gait, East Wemyss
Price £309,000

Castle Gait, East Wemyss

FINAL RELEASE - "TAYLOR " BUNGALOW- A STUNNING 3-BED DETACHED BUNGALOW WITH SPACIOUS DRIVEWAY

PLOTS 92 TAYLOR Allan England's team at First for Homes are proud to offer for sale this impressive 3-Bed Detached Bungalow located in a highly sought-after area of Castle Gait, East Wemyss and built by Easy Living Developments, a Fife based multi award winning builder you can trust to build your dream home.

This immaculate new build provides spacious and luxurious family living accommodation comprising stunning open-plan lounge/dining room/modern high specification German kitchen (with NEFF integrated appliances included), separate utility room, master bedroom with luxury master en-suite, walk-in wardrobe. 2 further double bedrooms with built-in wardrobes and a spacious 4-piece luxury family bathroom with Porcelanosa tiling. Garden Grounds and Driveway.

Call our friendly team for further information on 01592 752944.

* PHOTOGRAPHS ARE FOR ILLUSTRATION PURPOSES

* RESERVATION FEE APPLIES

* VIEWING CAN BE ARRANGED

- Stunning 3-Bed Detached Bungalow
- Impressive Open-Plan Lounge/Kitchen/Dining Room
- Exceptional Quality & Many Extras Included
- High Quality German Kitchen and NEFF Appliances Included
- Luxury Family Bathroom & Master En-Suite
- Gardens
- Driveway
- Register Your Interest!
- Reservation Fee Applies
- FINAL PHASE RELEASE





ELD- CASTLE GAIT

SITUATION – East Wemyss

ENTRANCE VESTIBULE

4'11" x 9'10" approx (1.50m x 3.00m approx)

HALLWAY 3'7" x 14'6" approx (1.09m x 4.42m approx)

LOUNGE

45'11" x 42'7"3'3" approx. (14' x 13'1" approx.)

KITCHEN / DINING ROOM

11'3" x 11'2" approx (3.43m x 3.40m approx)

UTILITY ROOM

5'11" x 5'7" approx (1.80m x 1.70m approx)

MASTER BEDROOM

10'11" x 12'9" approx (3.33m x 3.89m approx)

EN-SUITE

7' x 4' approx (2.13m x 1.22m approx)

BEDROOM 2

10'1" x 9'6" approx (3.07m x 2.90m approx)

BEDROOM 3

10'1" x 9'10" approx (3.07m x 3.00m approx)

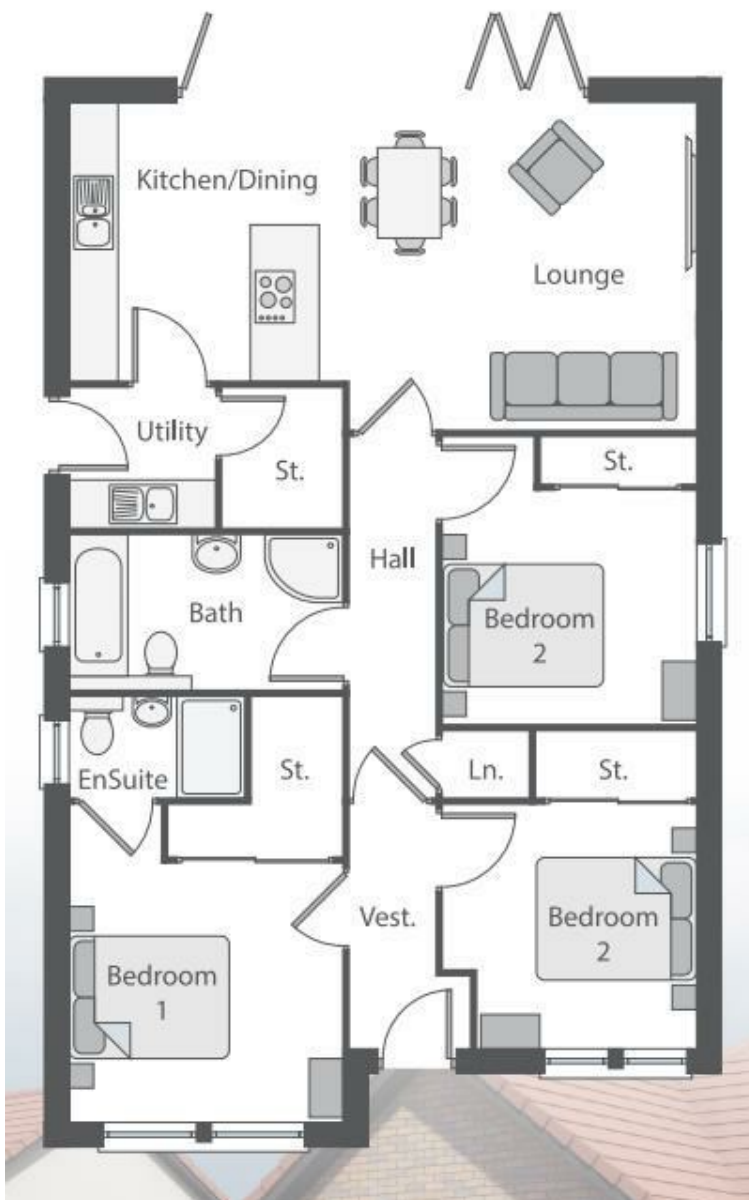
BATHROOM

10'11" x 6'3" approx (3.33m x 1.91m approx)

DRIVEWAY

GARDENS

INFORMATION



Information

These particulars are prepared on the basis of information provided by our clients. We have not tested the electrical system or any electrical appliances, nor where applicable, any central heating system. All sizes are recorded by electronic tape measurement to give an indicative, approximate size only. Prospective purchasers should make their own enquiries – no warranty is given or implied. This schedule is not intended to, and does not form any contract.

FREE Valuation

Selling Your Home?

Choose first for homes - a highly experienced estate agency team you can trust to sell your home at the highest possible price. Offering fantastic savings on selling fees, with no compromise on service, free professional photography highlighting your home in its best light, first for homes will be your first choice. Contact us today to arrange your appointment.

-  **first for trust**
-  **first for service**
-  **first for aftercare**

first for homes
 first for property in life - firstforhomes.co.uk

Contact Allan England's Team
01592 752 944

32 North Street, Glenrothes, Fife KY7 5NA
 Fax: 01592 807947
sales@firstforhomes.co.uk
www.firstforhomes.co.uk