

# first for homes

first for property in life - [firstforhomes.co.uk](https://www.firstforhomes.co.uk)

Contact Allan England's Team

01592 752 944



Kings Meadow, Coaltown of Balgonie

**Price £309,000**

# Kings Meadow, Coaltown of Balgonie

TAYLOR FEATURE - A STUNNING 3-BED DETACHED BUNGALOW DRIVEWAY! Built By Easy Living Developments!

Allan England's team at First for Homes are proud to offer for sale this impressive 3-Bed Detached Bungalow (95m2) located in a highly sought-after new development of Kings Meadow, Coaltown of Balgonie and built by Easy Living Developments, a Fife based multi award winning builder you can trust to build your dream home.

This immaculate new build provides spacious and luxurious family living accommodation comprising stunning open-plan lounge/dining room/modern high specification German kitchen (with NEFF integrated appliances included), separate utility room, master bedroom with luxury master en-suite, 2 further double bedrooms with built-in wardrobes and a spacious 4-piece luxury family bathroom with Porcelanosa tiling. Ground Source Heating. Garden Grounds. Driveway. EV charging points as standard. Option to include solar panels.

- \* Reservation Fee Applies
- \* Give us a call to find out more



- Stunning 3-Bed Detached Bungalow
- Impressive Open-Plan Lounge/Kitchen/Dining Room
- Exceptional Quality & Many Extras Included
- High Quality German Kitchen and NEFF Appliances Included
- Luxury Family Bathroom & Master En-Suite
- New Development Kings Meadow, Coaltown of Balgonie
- Driveway to the Side
- Register Your Interest!
- BUILT BY EASY LIVING DEVELOPMENTS
- EV charging points as standard. Option to include solar panels.





## SITUATION – Coaltown of Balgonie

### ENTRANCE VESTIBULE

4'11" x 9'10" approx (1.50m x 3.00m approx)

**HALLWAY** 3'7" x 14'6" approx (1.09m x 4.42m approx)

**LOUNGE** 14'0" x 13'1" approx. (4.27m x 3.99m approx.)

### KITCHEN / DINING ROOM

11'3" x 11'2" approx (3.43m x 3.40m approx)

### UTILITY ROOM

5'11" x 5'7" approx (1.80m x 1.70m approx)

### MASTER BEDROOM

10'11" x 12'9" approx (3.33m x 3.89m approx)

**EN-SUITE** 7' x 4' approx (2.13m x 1.22m approx)

### BEDROOM 2

10'1" x 9'6" approx (3.07m x 2.90m approx)

### BEDROOM 3

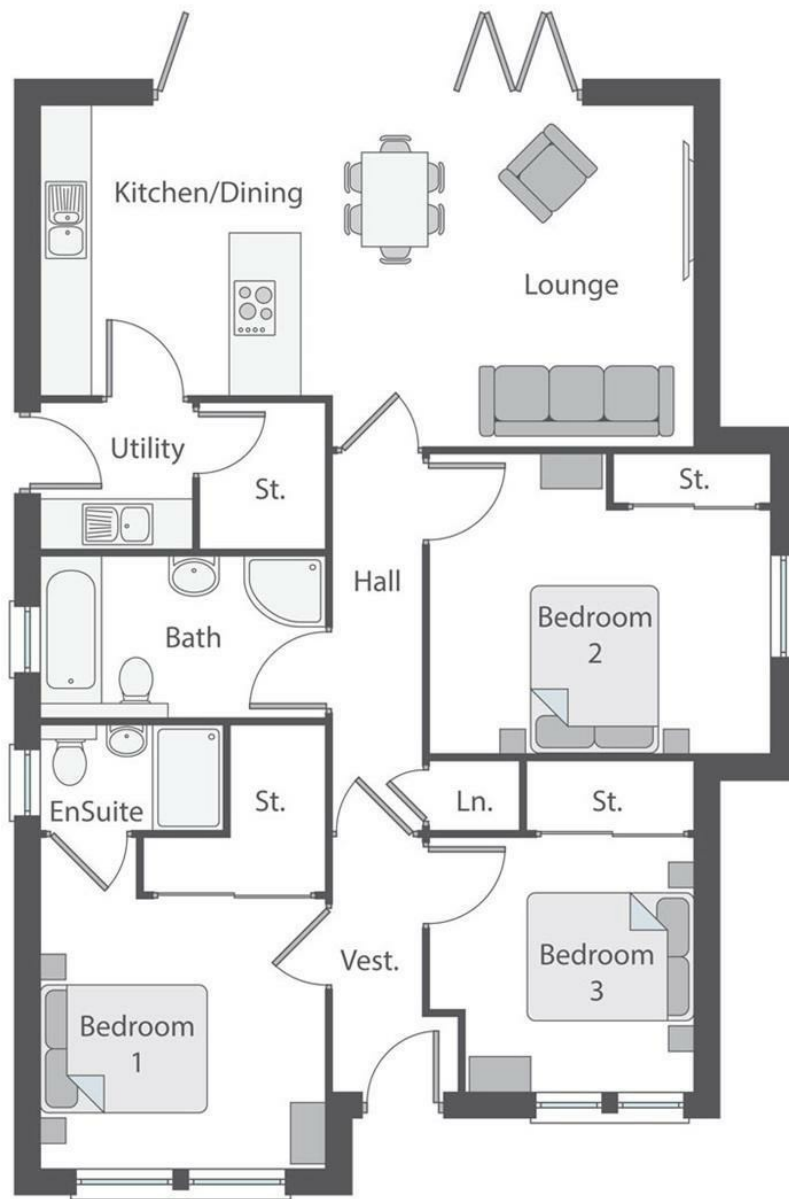
10'1 x 9'10" approx (3.07m x 3.00m approx)

### BATHROOM

10'11" x 6'3" approx (3.33m x 1.91m approx)

### DRIVEWAY

### INFORMATION



## Information

These particulars are prepared on the basis of information provided by our clients. We have not tested the electrical system or any electrical appliances, nor where applicable, any central heating system. All sizes are recorded by electronic tape measurement to give an indicative, approximate size only. Prospective purchasers should make their own enquiries – no warranty is given or implied. This schedule is not intended to, and does not form any contract.

## FREE Valuation

### Selling Your Home?

Choose first for homes - a highly experienced estate agency team you can trust to sell your home at the highest possible price. Offering fantastic savings on selling fees, with no compromise on service, free professional photography highlighting your home in its best light, first for homes will be your first choice. Contact us today to arrange your appointment.



**first for trust**



**first for service**



**first for aftercare**

**first for homes**  
first for property in life - [firstforhomes.co.uk](http://firstforhomes.co.uk)

Contact Allan England's Team  
**01592 752 944**

32 North Street, Glenrothes, Fife KY7 5NA  
Fax: 01592 807947  
[sales@firstforhomes.co.uk](mailto:sales@firstforhomes.co.uk)  
[www.firstforhomes.co.uk](http://www.firstforhomes.co.uk)