

first for homes

first for property in life - [firstforhomes.co.uk](https://www.firstforhomes.co.uk)

Contact Allan England's Team

01592 752 944



Castle Gait Development, East Wemyss

Price £189,995

Castle Gait Development, East Wemyss

The "NINA" 2 Bedroom Semi Detached Bungalow with Private Driveway. Private Rear South West Facing Gardens - LAST ONE REMAINING ON DEVELOPMENT

Allan England's team at First for Homes are proud to offer for sale this impressive 2-Bed Semi-Detached Bungalow (59.6m²) located in a highly sought-after area of Castle Gait, East Wemyss and built by Easy Living Developments, a Fife based multi award winning builder you can trust to build your dream home.

This stunning high specification new build provides spacious and luxurious family living accommodation comprising lounge with doors leading to rear garden, modern high specification German kitchen (with NEFF integrated appliances including Fridge Freezer, Hob, Oven, Dishwasher, Washerdryer), Our staple Nina 2 bedroom Semi Detached Bungalow is the last remaining of the 2 bedroom Bungalows on this development.

The welcoming kitchen with integrated appliances, a spacious bathroom with buyers choice of walk-in shower or bath with overhead shower, 2 great sized bedrooms, both with fitted wardrobes and all topped off with the generous lounge with French door access to the rear garden. Private driveway with space for two vehicles. Note plot dependant variable garden sizes to the rear. All boasting South West Facing Rear Gardens. Solar Panels. Fitted Alarm. Gas Heating. Stunning homes not to be missed. Please call us for further information.

GARDEN SIZE Plot 63 – 14.2m (D) x 8.2m (W) – 111m²

- * Photographs for Illustration Purposes Only
- * Reservation Fee Applies

Call our friendly team for further information on 01592 752944.

- NINA - Stunning New Style 2-Bed Semi-Detached Bungalow
- THE LAST OF THE 2 BEDROOM SEMI DETACHED BUNGALOWS ON THIS DEVELOPMENT
- Lounge, Kitchen, 2 Double Bedrooms
- High Quality German Kitchen and NEFF Appliances Included
- Choice of Bathroom/Showerroom
- Driveway
- South West Facing Garden Grounds with Woodland Outlook
- Prices from £189,995
- Reservation Fees Apply
- Area 59.6m²





PHOTOGRAPHS (Illustration Purposes Only)

ELD- CASTLE GAIT

SITUATION – East Wemyss

HALLWAY 13'0" x 7'9" approx (3.97m x 2.37m approx)

LOUNGE 11'2" x 14'0" approx (3.42m x 4.29m approx)

KITCHEN 8'1" x 10'1" approx (2.47m x 3.08m approx)

BEDROOM 1

10'2" x 9'1" approx (3.12m x 2.78m approx)

BEDROOM 2 9'1" x 9'1" approx (2.78m x 2.78m approx)

SHOWER ROOM

GARDEN GROUNDS

DRIVEWAY

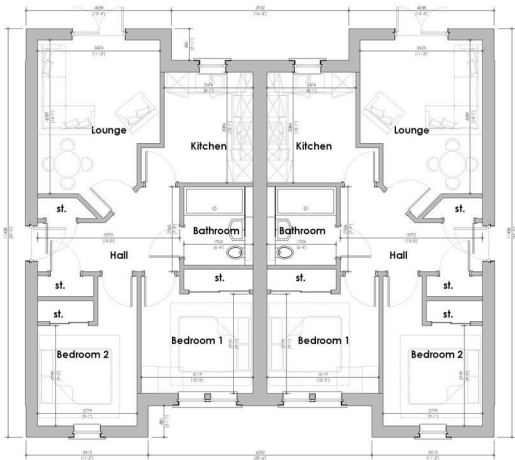
RESERVATION FEE APPLIES



Front Elevation

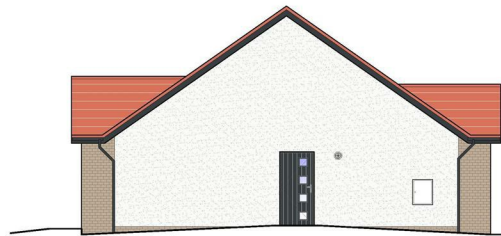


Rear Elevation

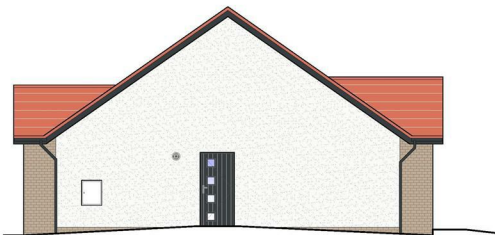


Floor Plan, Plot A

Floor Plan, Plot B



Side Elevation



Side Elevation

DATE	DESCRIPTION	BY	APP
10/1/23	Issuing Revision	JAW	1/001
	External window change		

EASY LIVING
PLANNING

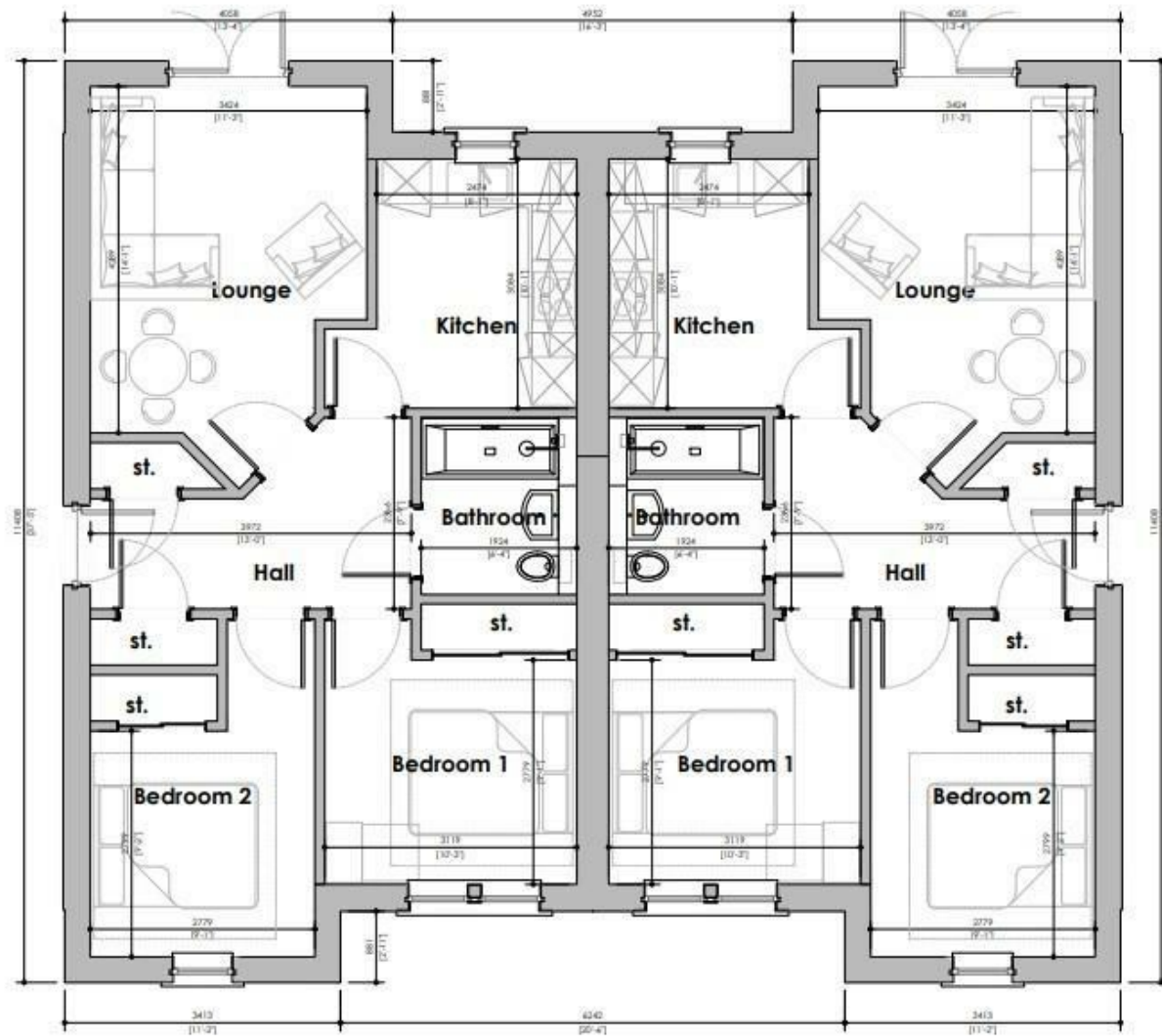
Proposed Development of
Castle Gait, East Wemyss

COURT XI House type

PLANNING
Floor Plan & Elevations

Drawn by:	Checked by:	Date:	Scale:
JAW	JAW	01/06/23	1:50
Revision:	Author:	Drawing No:	Revision:
078	COUL	P/001	A

A1



Floor Plan, Plot A
Area - 59.6m²

Floor Plan, Plot B
Area - 59.6m²

Information

These particulars are prepared on the basis of information provided by our clients. We have not tested the electrical system or any electrical appliances, nor where applicable, any central heating system. All sizes are recorded by electronic tape measurement to give an indicative, approximate size only. Prospective purchasers should make their own enquiries – no warranty is given or implied. This schedule is not intended to, and does not form any contract.

FREE Valuation

Selling Your Home?

Choose first for homes - a highly experienced estate agency team you can trust to sell your home at the highest possible price. Offering fantastic savings on selling fees, with no compromise on service, free professional photography highlighting your home in its best light, first for homes will be your first choice. Contact us today to arrange your appointment.



first for trust



first for service



first for aftercare

first for homes
first for property in life - firstforhomes.co.uk

Contact Allan England's Team
01592 752 944

32 North Street, Glenrothes, Fife KY7 5NA
Fax: 01592 807947
sales@firstforhomes.co.uk
www.firstforhomes.co.uk