



East Wemyss

**Price £309,000**

LAST ONE REMAINING

"PLOT 080a - TAYLOR FEATURE" - A STUNNING 3-BED DETACHED BUNGALOW WITH 4 CAR DRIVEWAY AND GENEROUS PLOT WITH SOUTH FACING GARDENS!

Allan England's team at First for Homes are proud to offer for sale this impressive 3-Bed Detached Bungalow located in a highly sought-after area of Castle Gait, East Wemyss and built by Easy Living Developments, a Fife based multi award winning builder you can trust to build your dream home.

This immaculate new build provides spacious and luxurious family living accommodation comprising stunning open-plan lounge/dining room/modern high specification German kitchen (with NEFF integrated appliances included), separate utility room, master bedroom with luxury master en-suite, 2 further double bedrooms with built-in wardrobes and a spacious 4-piece luxury family bathroom with Porcelanosa tiling. There are gardens to the front and South facing rear with a 4 car driveway to the side.

\* Reservation Fee Applies\*

Call our friendly team for further information on 01592 752944.

- Stunning 3-Bed Detached Bungalow
- Impressive Open-Plan Lounge/Kitchen/Dining Room
- Exceptional Quality & Many Extras Included
- High Quality German Kitchen and NEFF Appliances Included
- Luxury Family Bathroom & Master En-Suite
- South-West Facing Rear Garden
- Driveway to the Side
- Register Your Interest!
- Approx Completion 12th April 2024





## **ELD- CASTLE GAIT**

### **SITUATION – East Wemyss**

#### **ENTRANCE VESTIBULE**

4'11" x 9'10" approx (1.50m x 3.00m approx)

**HALLWAY** 3'7" x 14'6" approx (1.09m x 4.42m approx)

**LOUNGE** 14'0" x 13'1" approx. (4.27m x 3.99m approx.)

#### **KITCHEN / DINING ROOM**

11'3" x 11'2" approx (3.43m x 3.40m approx)

#### **UTILITY ROOM**

5'11" x 5'7" approx (1.80m x 1.70m approx)

#### **MASTER BEDROOM**

10'11" x 12'9" approx (3.33m x 3.89m approx)

**EN-SUITE** 7' x 4' approx (2.13m x 1.22m approx)

#### **BEDROOM 2**

10'1" x 9'6" approx (3.07m x 2.90m approx)

#### **BEDROOM 3**

10'1 x 9'10" approx (3.07m x 3.00m approx)

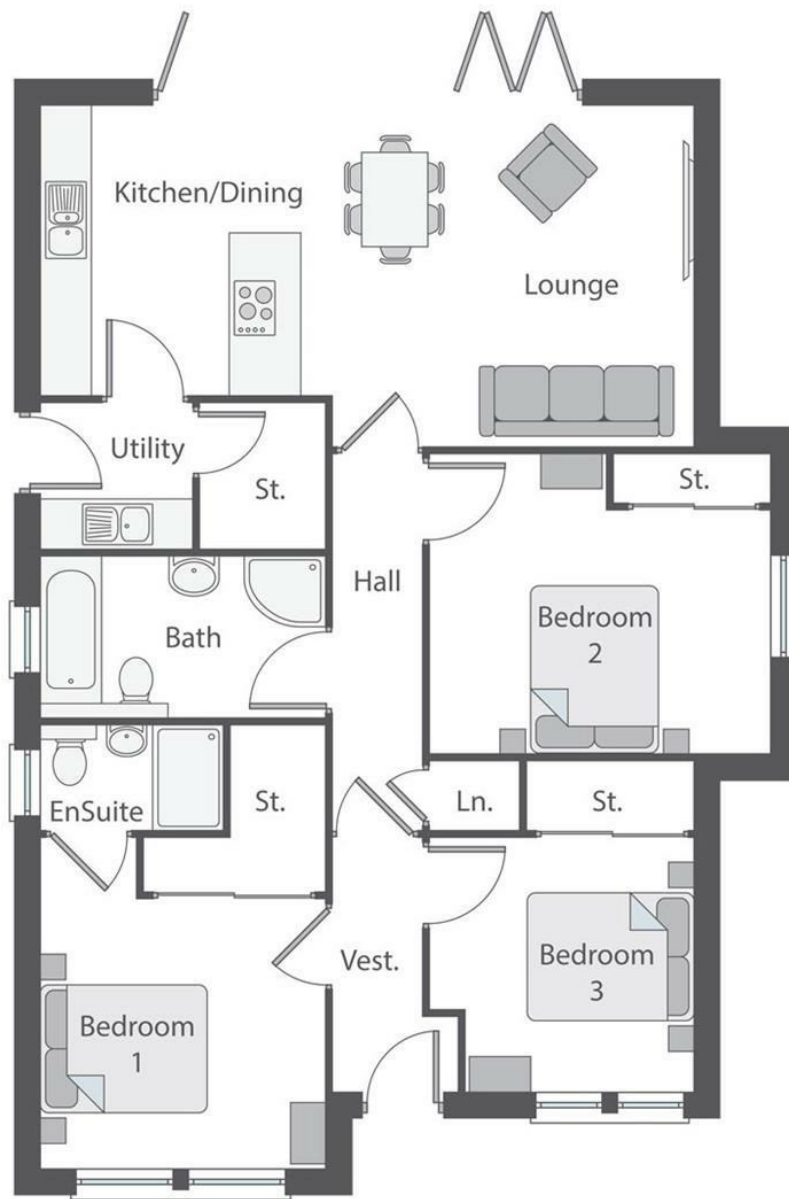
#### **BATHROOM**

10'11" x 6'3" approx (3.33m x 1.91m approx)

#### **DRIVEWAY**

#### **SOUTH-WEST FACING GARDENS**

#### **INFORMATION**



## Information

These particulars are prepared on the basis of information provided by our clients. We have not tested the electrical system or any electrical appliances, nor where applicable, any central heating system. All sizes are recorded by electronic tape measurement to give an indicative, approximate size only. Prospective purchasers should make their own enquiries – no warranty is given or implied. This schedule is not intended to, and does not form any contract.

## FREE Valuation

### Selling Your Home?

Choose first for homes - a highly experienced estate agency team you can trust to sell your home at the highest possible price. Offering fantastic savings on selling fees, with no compromise on service, free professional photography highlighting your home in its best light, first for homes will be your first choice. Contact us today to arrange your appointment.



**first for trust**



**first for service**



**first for aftercare**

**first for homes**  
first for property in life - [firstforhomes.co.uk](http://firstforhomes.co.uk)

Contact Allan England's Team  
**01592 752 944**

32 North Street, Glenrothes, Fife KY7 5NA  
Fax: 01592 807947  
[sales@firstforhomes.co.uk](mailto:sales@firstforhomes.co.uk)  
[www.firstforhomes.co.uk](http://www.firstforhomes.co.uk)