

21 High Street

Gorleston, Great Yarmouth, NR31 6RT

£750 pcm

EPC Rating D

A newly decorated one bedroom terraced house situated on the popular High Street of Gorleston close to all local amenities and shops.

LOUNGE

12' 0" x 10' 8" narrowing to 7' 5" (3.67m x 3.27m to 2.28m) carpet; wall mounted radiator; UPVC double glazed window; front entrance door; feature fireplace; open staircase to first floor.

KITCHEN

12' 0" x 6' 3" (3.67m x 1.92m) tiled flooring; wall and base units; integrated double oven, hob and extractor hood; space for fridge freezer and washing machine; UPVC double glazed window.

BEDROOM

12' 2" x 10' 11" narrowing to 8' 2" (3.71m x 3.35m to 2.49m) carpet; wall mounted radiator; UPVC double glazed window.

BATHROOM

12' 1" x 6' 2" (3.70m x 1.90m) vinyl flooring; wall mounted radiator; wall mounted mains connected shower over bath; low level wc; hand wash basin; UPVC double glazed window.

OUTSIDE

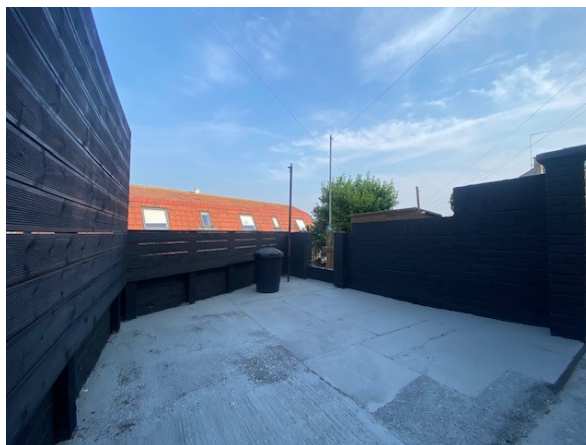
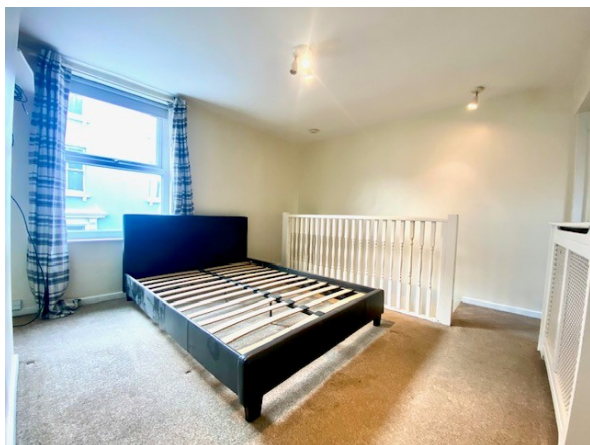
To the rear there is a yard / patio area.

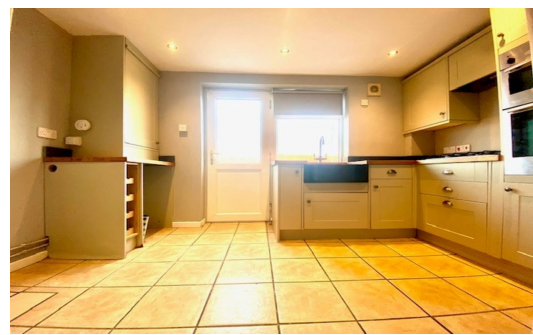
VIEWINGS

Strictly by appointment with the letting agents, BYCROFT LETTINGS, tel: 01493 844489.

COUNCIL TAX

The property is currently listed as Band A.





21 High Street

Gorleston, Great Yarmouth, NR31 6RT

£750 pcm

EPC Rating D

A newly decorated one bedroom terraced house situated on the popular High Street of Gorleston close to all local amenities and shops.

LOUNGE

12' 0" x 10' 8" narrowing to 7' 5" (3.67m x 3.27m to 2.28m) carpet; wall mounted radiator; UPVC double glazed window; front entrance door; feature fireplace; open staircase to first floor.

KITCHEN

12' 0" x 6' 3" (3.67m x 1.92m) tiled flooring; wall and base units; integrated double oven, hob and extractor hood; space for fridge freezer and washing machine; UPVC double glazed window.

BEDROOM

12' 2" x 10' 11" narrowing to 8' 2" (3.71m x 3.35m to 2.49m) carpet; wall mounted radiator; UPVC double glazed window.

BATHROOM

12' 1" x 6' 2" (3.70m x 1.90m) vinyl flooring; wall mounted radiator; wall mounted mains connected shower over bath; low level wc; hand wash basin; UPVC double glazed window.

OUTSIDE

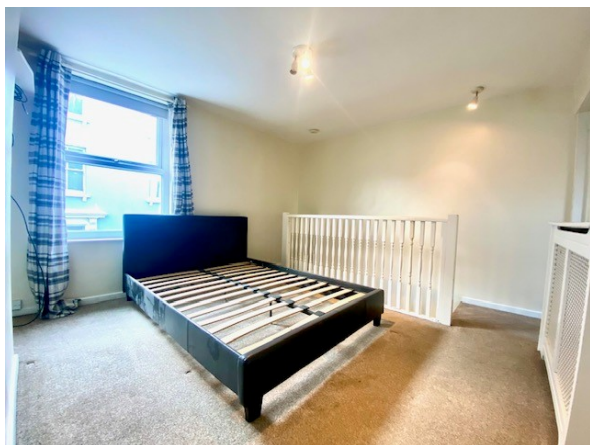
To the rear there is a yard / patio area.

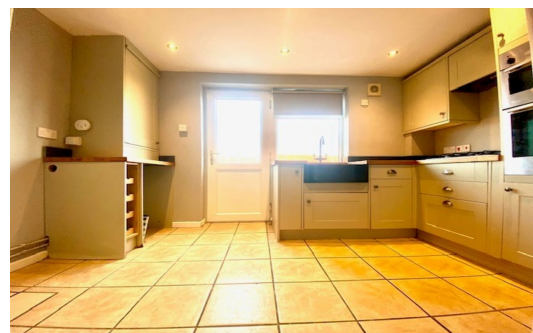
VIEWINGS

Strictly by appointment with the letting agents, BYCROFT LETTINGS, tel: 01493 844489.

COUNCIL TAX

The property is currently listed as Band A.





21 High Street

Gorleston, Great Yarmouth, NR31 6RT

£750 pcm

EPC Rating D

A newly decorated one bedroom terraced house situated on the popular High Street of Gorleston close to all local amenities and shops.

LOUNGE

12' 0" x 10' 8" narrowing to 7' 5" (3.67m x 3.27m to 2.28m) carpet; wall mounted radiator; UPVC double glazed window; front entrance door; feature fireplace; open staircase to first floor.

KITCHEN

12' 0" x 6' 3" (3.67m x 1.92m) tiled flooring; wall and base units; integrated double oven, hob and extractor hood; space for fridge freezer and washing machine; UPVC double glazed window.

BEDROOM

12' 2" x 10' 11" narrowing to 8' 2" (3.71m x 3.35m to 2.49m) carpet; wall mounted radiator; UPVC double glazed window.

BATHROOM

12' 1" x 6' 2" (3.70m x 1.90m) vinyl flooring; wall mounted radiator; wall mounted mains connected shower over bath; low level wc; hand wash basin; UPVC double glazed window.

OUTSIDE

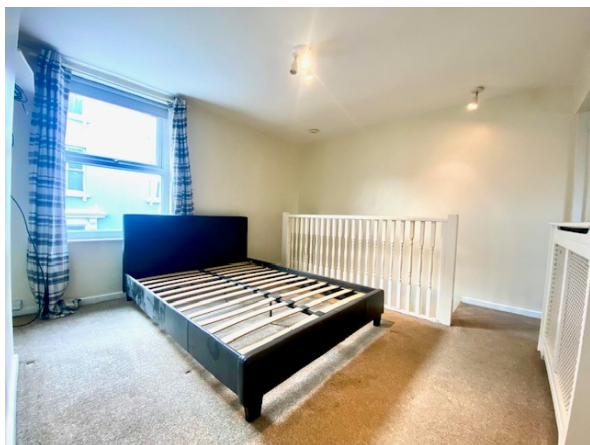
To the rear there is a yard / patio area.

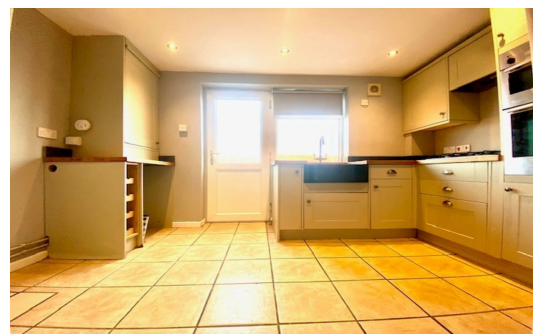
VIEWINGS

Strictly by appointment with the letting agents, BYCROFT LETTINGS, tel: 01493 844489.

COUNCIL TAX

The property is currently listed as Band A.





21 High Street

Gorleston, Great Yarmouth, NR31 6RT

£750 pcm

EPC Rating D

A newly decorated one bedroom terraced house situated on the popular High Street of Gorleston close to all local amenities and shops.

LOUNGE

12' 0" x 10' 8" narrowing to 7' 5" (3.67m x 3.27m to 2.28m) carpet; wall mounted radiator; UPVC double glazed window; front entrance door; feature fireplace; open staircase to first floor.

KITCHEN

12' 0" x 6' 3" (3.67m x 1.92m) tiled flooring; wall and base units; integrated double oven, hob and extractor hood; space for fridge freezer and washing machine; UPVC double glazed window.

BEDROOM

12' 2" x 10' 11" narrowing to 8' 2" (3.71m x 3.35m to 2.49m) carpet; wall mounted radiator; UPVC double glazed window.

BATHROOM

12' 1" x 6' 2" (3.70m x 1.90m) vinyl flooring; wall mounted radiator; wall mounted mains connected shower over bath; low level wc; hand wash basin; UPVC double glazed window.

OUTSIDE

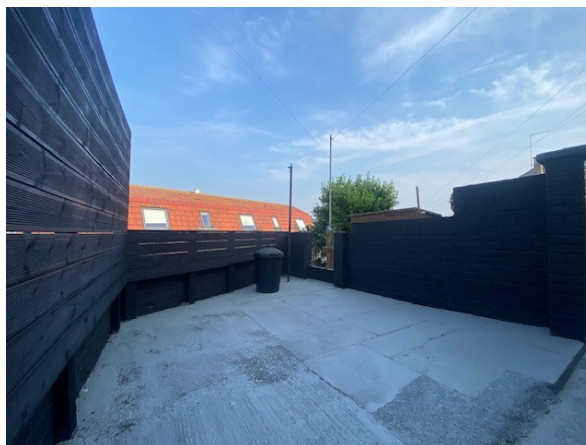
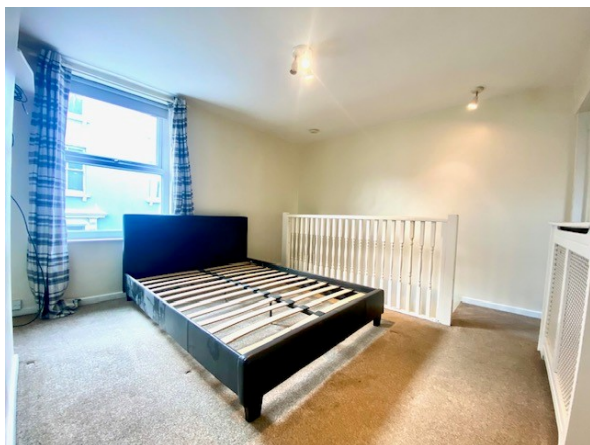
To the rear there is a yard / patio area.

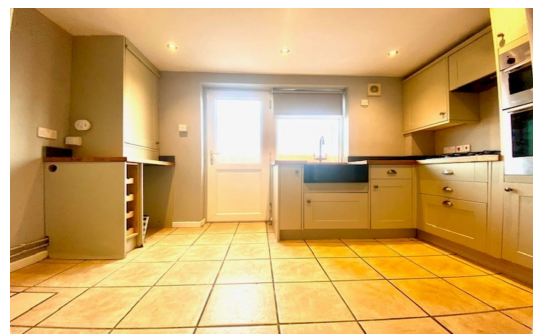
VIEWINGS

Strictly by appointment with the letting agents, BYCROFT LETTINGS, tel: 01493 844489.

COUNCIL TAX

The property is currently listed as Band A.





21 High Street

Gorleston, Great Yarmouth, NR31 6RT

£750 pcm

EPC Rating D

A newly decorated one bedroom terraced house situated on the popular High Street of Gorleston close to all local amenities and shops.

LOUNGE

12' 0" x 10' 8" narrowing to 7' 5" (3.67m x 3.27m to 2.28m) carpet; wall mounted radiator; UPVC double glazed window; front entrance door; feature fireplace; open staircase to first floor.

KITCHEN

12' 0" x 6' 3" (3.67m x 1.92m) tiled flooring; wall and base units; integrated double oven, hob and extractor hood; space for fridge freezer and washing machine; UPVC double glazed window.

BEDROOM

12' 2" x 10' 11" narrowing to 8' 2" (3.71m x 3.35m to 2.49m) carpet; wall mounted radiator; UPVC double glazed window.

BATHROOM

12' 1" x 6' 2" (3.70m x 1.90m) vinyl flooring; wall mounted radiator; wall mounted mains connected shower over bath; low level wc; hand wash basin; UPVC double glazed window.

OUTSIDE

To the rear there is a yard / patio area.

VIEWINGS

Strictly by appointment with the letting agents, BYCROFT LETTINGS, tel: 01493 844489.

COUNCIL TAX

The property is currently listed as Band A.

