



Greville Place,
London NW6



A beautifully refurbished house with garden and parking



Local Authority: London Borough of Camden

Council Tax band: G

Deposit: £18,000

Property Area: 2,257 Sq Ft

£3,000 per week



This beautifully refurbished, white-fronted home in Greville Place, measuring approximately 2,257 sq ft.

Located on a tree-lined street and benefiting from excellent light throughout, the property comprises a large double reception room leading on to a private terrace overlooking the garden, guest cloakroom, four double bedrooms, three bathrooms (one en suite), and a large extended eat-in kitchen/dining area with floor-to-ceiling windows overlooking the private garden.

Further benefits include gated off street parking to the front, a private garden and a terrace.

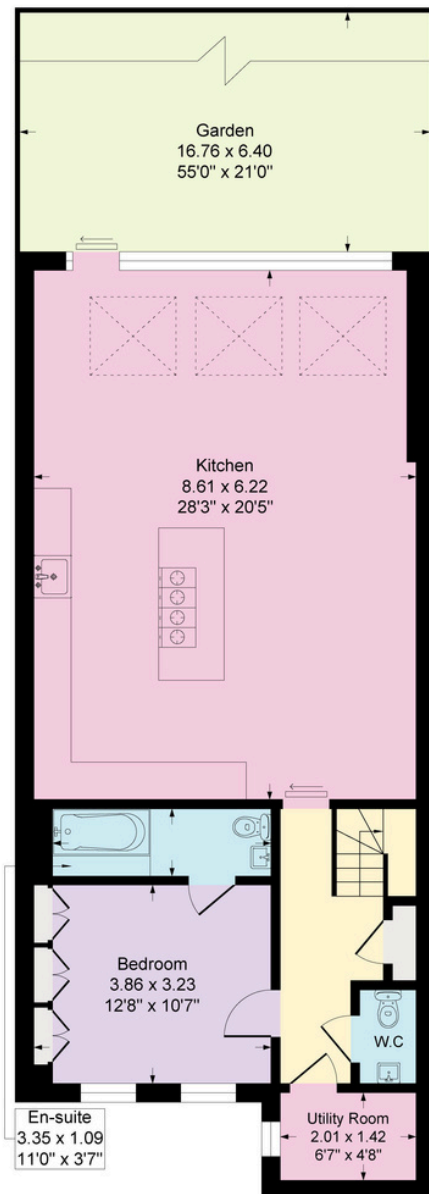
Greville Place is within 0.5 miles of Maida Vale underground station (Bakerloo Line). St. John's Wood Station (Jubilee Line) is 0.8 miles away.



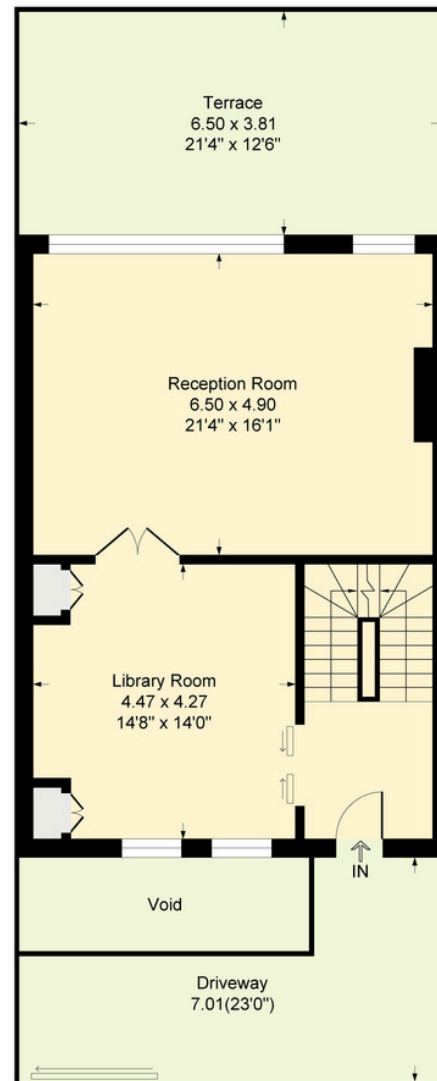


Greville Place, London, NW6

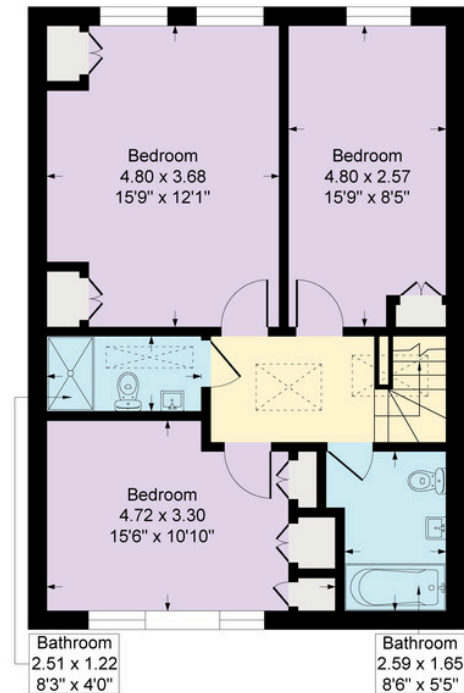
Approximate Gross Internal Floor Area = 209.7 sq m / 2257 sq ft



Lower Ground Floor



Ground Floor



First Floor

Illustration for identification purposes only, measurements are approximate, not to scale.

We would be delighted
to tell you more.

Chanel Rodriguez-Moore
+44 20 3815 3361
chanel.rodriguez@knightfrank.com

Knight Frank St John's Wood
5-7 Wellington Place
London NW8 7PB

[knightfrank.co.uk](https://www.knightfrank.co.uk)

Your partners in property

1. Particulars: These particulars are not an offer or contract, nor part of one. You should not rely on statements given by Knight Frank in the particulars, by word of mouth or in writing ("information") as being factually accurate about the property, its condition or its value. Neither Knight Frank nor any joint agent has any authority to make any representations about the property, and accordingly any information given is entirely without responsibility on the part of Knight Frank. 2. Material Information: Please note that the material information above is provided to Knight Frank by third parties and is provided here as a guide only. Some of the information provided (such as the rent, deposit or length of tenancy) is subject to change, depending on offers received by the landlord. While Knight Frank has taken steps to verify this information, we advise you to confirm the details of any such material information prior to any offer for the tenancy being submitted. If we are informed of changes to this information by the landlord, we will use reasonable endeavours to update this as soon as practical. 3. Photos, Videos etc: The photographs, property videos and virtual viewings etc. show only certain parts of the property as they appeared at the time they were taken. Areas, measurements and distances given are approximate only. 4. Fixtures and fittings: Carpets, curtains, light fittings and other items fixed to the property (and not fixed to the property) belonging to the landlord are included in any tenancy as evidenced in the inventory, unless specifically noted otherwise. All those items regarded as tenant's fixtures and fittings, are specifically excluded from any tenancy and will not be evidenced in the inventory. 5. Deposit: All potential tenants should be advised that, as well as rent a holding deposit will be payable which is equal to one week's rent (if an AST) and two weeks' rent (if not an AST), a tenancy deposit will also be payable which is equal to 6 weeks rent (if not an AST and/or the annual rent is over £50,000), or 5 weeks' rent (if an AST and/or the annual rent is below £50,000). If the landlord agrees to you having a pet you may be required to pay a higher deposit (if not an AST) or higher weekly rent (if an AST). An administration fee of £288 and referencing fees of £60 per person will also apply when renting a property (if not an AST). (All fees shown are inclusive of VAT.) For other fees that might apply, please ask us or visit www.knightfrank.co.uk/tenantfees. 6. To find out how we process Personal Data, please refer to our Group Privacy Statement and other notices at <https://www.knightfrank.com/legals/privacy-statement>.

Particulars dated May 2024. Photographs and videos dated May 2024. All information is correct at the time of going to print. Knight Frank is the trading name of Knight Frank LLP. Knight Frank LLP is a limited liability partnership registered in England and Wales with registered number OC305934. Our sreegrvisicteeer s d office is at 55 Baker Street, London W1U 8AN. We use the term 'partner' to refer to a member of Knight Frank LLP, or an employee or consultant. A list of members names of Knight Frank LLP may be inspected at our registered office. If you do not want us to contact you further about our then please contact us by either calling 020 3544 0692, email to marketing.help@knightfrank.com or post to our UK Residential Marketing Manager at our registered office (above) providing your name and address.