

Simple Approach



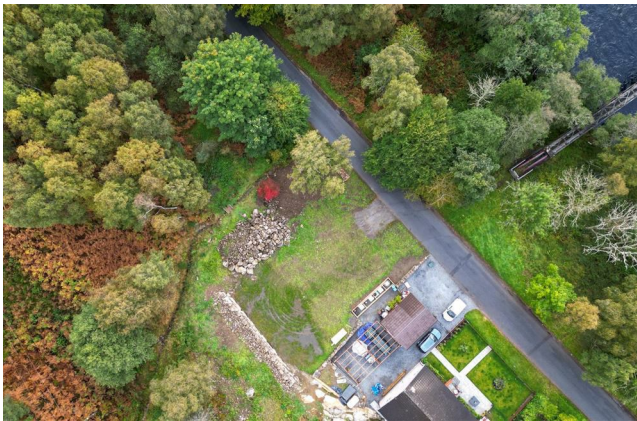
Plot of Land , Pitlochry

PH16 5NT

Offers over £110,000

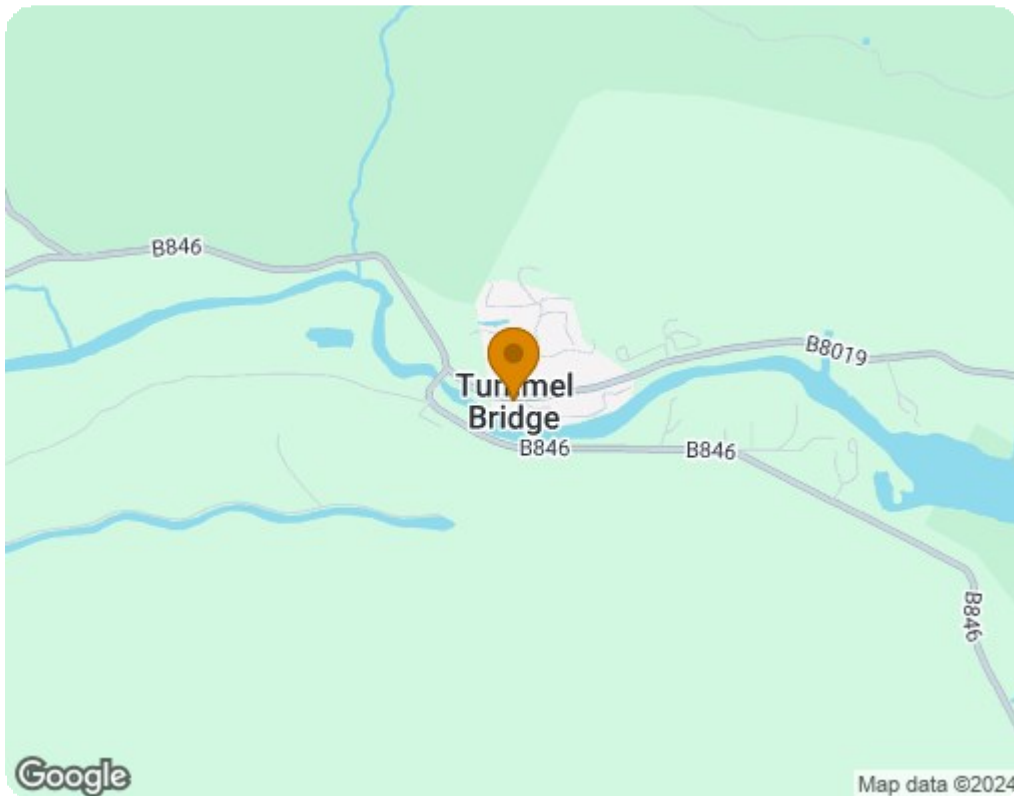
Plot of Land , Pitlochry, PH16 5NT

Simple Approach are pleased to offer this very well located plot of land (Approx. 708 sqm) situated within a highly sought after location. This plot is set close by to a range of excellent local amenities along with being a short drive away from Perth City Centre and the lovely town of Blairgowrie. This lovely plot holds ample potential to be a stunning home due to its size and beautiful location. We highly recommend taking a drive to have a look at this great plot of land to appreciate the overall size and picturesque surroundings on offer.





- Approved Buliding Warrant Number 21/00156/DOM2 Expires 30/3/2026
- Services At Site
- 708 Square Metres
- Treatment Plant And Drainage In Place
- Plot Ready To Be Built On With Retraining Wall



Energy Efficiency Rating		
	Current	Potential
<i>Very energy efficient - lower running costs</i>		
(92 plus) A		
(81-91) B		
(69-80) C		
(55-68) D		
(39-54) E		
(21-38) F		
(1-20) G		
<i>Not energy efficient - higher running costs</i>		
Scotland	EU Directive 2002/91/EC	
Environmental Impact (CO ₂) Rating		
	Current	Potential
<i>Very environmentally friendly - lower CO₂ emissions</i>		
(92 plus) A		
(81-91) B		
(69-80) C		
(55-68) D		
(39-54) E		
(21-38) F		
(1-20) G		
<i>Not environmentally friendly - higher CO₂ emissions</i>		
Scotland	EU Directive 2002/91/EC	