

Simple Approach



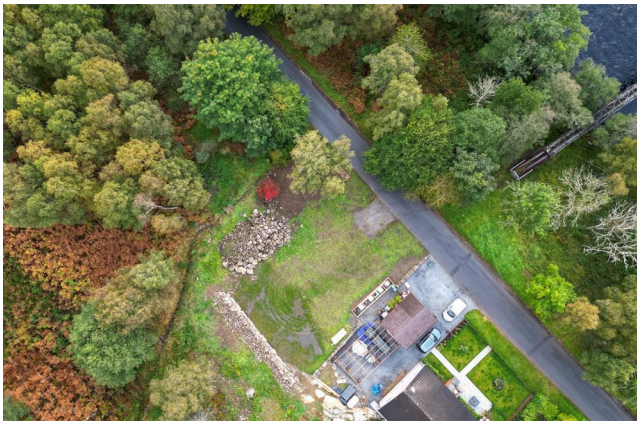
**Plot of Land , Pitlochry**

**PH16 5NT**

**Offers over £120,000**

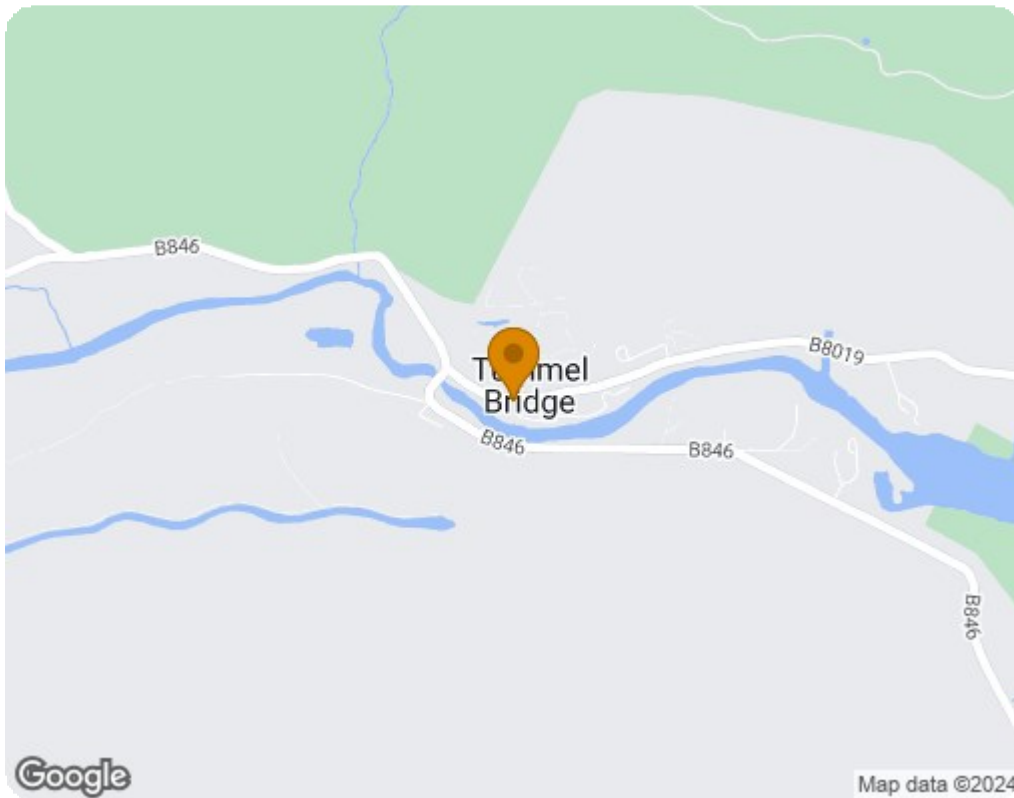
## Plot of Land , Pitlochry, PH16 5NT


Simple Approach are pleased to offer this very well located plot of land (Approx. \*\*\*sqm) situated within a highly sought after location. This plot is set close by to a range of excellent local amenities along with being a short drive away from Perth City Centre and the lovely town of Blairgowrie. This lovely plot holds ample potential to be a stunning home due to its size and beautiful location. We highly recommend taking a drive to have a look at this great plot of land to appreciate the overall size and picturesque surroundings on offer.





- Approved Buliding Warrant Number 21/00156/DOM2 Expires 30/3/2026
- Services At Site
- 708 Square Metres
- Treatment Plant And Drainage In Place
- Plot Ready To Be Built On With Retraining Wall



Energy Efficiency Rating		
	Current	Potential
<i>Very energy efficient - lower running costs</i>		
(92 plus) <b>A</b>		
(81-91) <b>B</b>		
(69-80) <b>C</b>		
(55-68) <b>D</b>		
(39-54) <b>E</b>		
(21-38) <b>F</b>		
(1-20) <b>G</b>		
<i>Not energy efficient - higher running costs</i>		
<b>Scotland</b>		EU Directive 2002/91/EC 
Environmental Impact (CO <sub>2</sub> ) Rating		
	Current	Potential
<i>Very environmentally friendly - lower CO2 emissions</i>		
(92 plus) <b>A</b>		
(81-91) <b>B</b>		
(69-80) <b>C</b>		
(55-68) <b>D</b>		
(39-54) <b>E</b>		
(21-38) <b>F</b>		
(1-20) <b>G</b>		
<i>Not environmentally friendly - higher CO2 emissions</i>		
<b>Scotland</b>		EU Directive 2002/91/EC 