



The Dower House

Grove Mill Lane, Hertfordshire



An exceptional Grade II Listed Georgian Dower House.

Chandlers Cross 1 mile, Watford 2 miles, Central London 19 miles.
(Distances approximate).

| | | |
|---|---|---|
|  |  |  |
| 6+1 | 5+1 | 3+1 |

Summary of accommodation

Main House

Reception hall | Kitchen/breakfast room | Cinema/family room | Dining room/library | Audio library | Sitting room | Guest washroom | Laundry/utility

Principal bedroom with dressing room and en suite bathroom

Four further bedrooms with en suite bathrooms | Cinema room | Gym/further bedroom

Annexe

Living room/bedroom | Kitchen | Shower room | Wine room




Garden and Grounds


Extensive level lawns | Rivers and mill stream frontage | Office/summer house | Garden office and store shed | Hot tub


In all approximately 2.47 acres

Situation

Time and distances are approximate

-  Chandlers Cross 1 mile
Watford 2 miles
Central London 19 miles
-  M25 (J19) 2 miles
- 

Watford 2 miles
(London Euston from 17 minutes)
- 

Heathrow Airport 19 miles
Luton Airport 17 miles
- 

York House
Westbrook Hay School
Merchant Taylors
The Royal Masonic School for Girls
Aldenham School
Haberdashers Boys and Girls
Lockers Park School
Harrow



The Dower House

The Dower House, discreetly nestled on the edge of the Grove Estate, is close to excellent schools, market towns, and has easy access to central London and Heathrow and Luton airports. The Grove Estate boasts a five-star hotel, renowned spa, and championship golf course. Dating back to the late 17th and 18th centuries, The Dower House has historical significance, once inhabited by notable figures such as composer Frederick Delius and cooking personality Fanny Craddock, who presented her BBC cooking programme from the kitchen of the house.

Meticulously refurbished recently, the house features splendid reception spaces, including a split-level hall with antique French oak floors and a grand staircase. The spacious kitchen/breakfast room showcases handcrafted wooden units, a large dining area, and a six-oven AGA. The cosy family room/kitchen exudes warmth with its brick fireplace and bay window offering scenic views of the mill stream. Further reception rooms include the sitting room and drawing room/library with its beautiful walnut panelling by David Salmon of Arthur Brett and Sons Ltd.

Upstairs, the principal suite enjoys views of the mill stream and riverbanks, with a dressing room and luxurious en suite bathroom. The guest bedroom suite was completely refurbished in 2024 and there are three recently renewed bedroom suites on the first floor.







Outside

The main gardens feature extensive lawns leading to the riverbanks. The wooden bridge across the mill stream (the river Gade) leads to another area of the gardens with gardener's sheds and a path leads to a large lawn. To the front of the house there is a newly appointed one bedroom self-contained studio annexe with fully equipped kitchen and shower room, with a purpose-built air conditioned wine room to the side. A recently reconstructed gardener's office includes a kitchen and WC. There is ample parking to the front of the house on the newly laid granite pebble driveway.

Privacy is ensured by electric wrought iron gates, enhancing the serene ambience of The Dower House.



Garden office/summer house

Approximate Gross Internal Floor Area

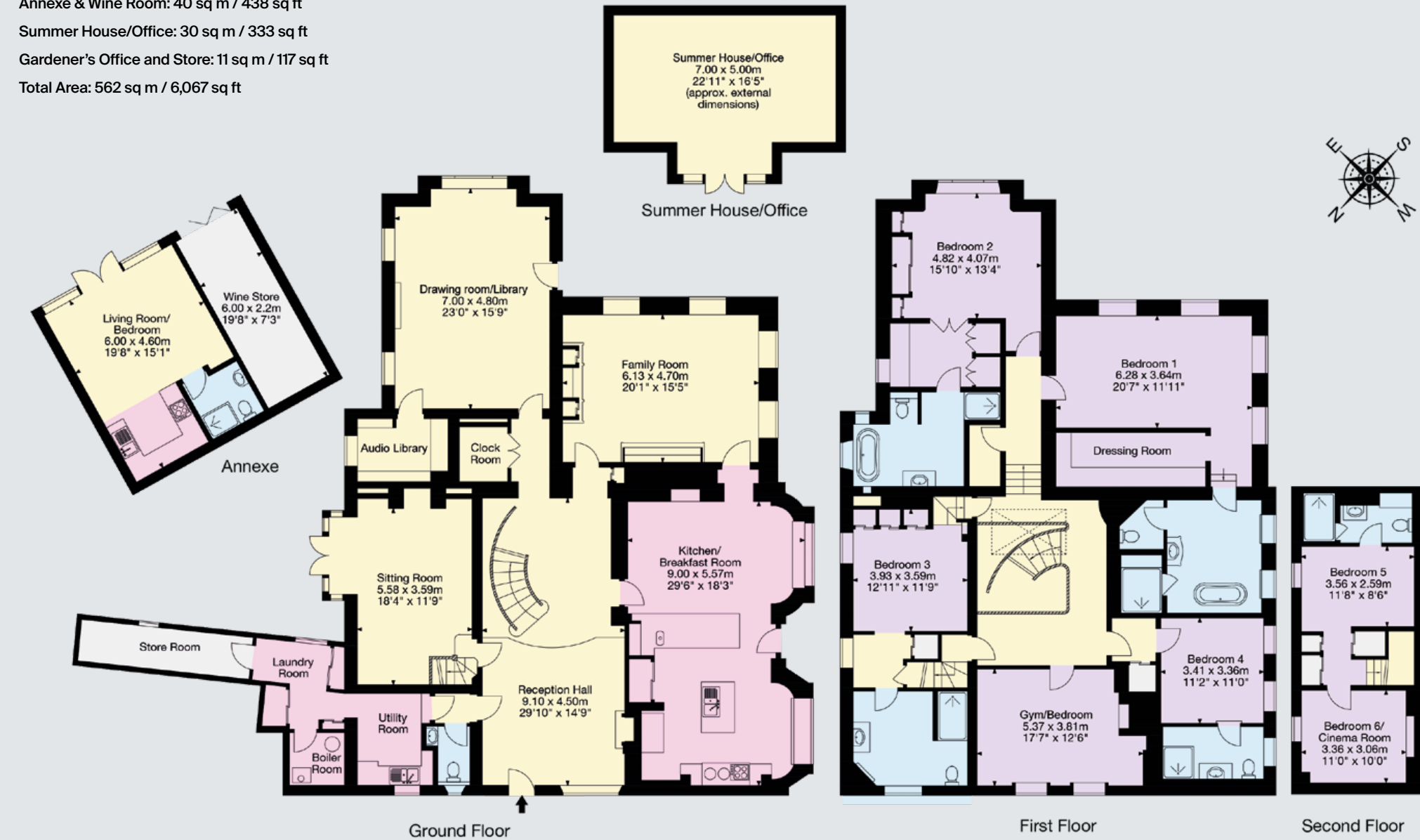
Main House: 481 sq m / 5,179 sq ft

Annexe & Wine Room: 40 sq m / 438 sq ft

Summer House/Office: 30 sq m / 333 sq ft

Gardener's Office and Store: 11 sq m / 117 sq ft

Total Area: 562 sq m / 6,067 sq ft



This plan is for guidance only and must not be relied upon as a statement of fact. Attention is drawn to the important notice on the last page of the text of the Particulars.

Property Information

Services:

Mains electricity and water, newly installed private drainage treatment plant, gas-fired central heating, and AGA.

Tenure:

Freehold.

Local Authority:

Three Rivers District Council

01635 551111

Council Tax:

Band H

EPC:

The Dower House - E

Annexe - D

Postcode:

WD17 3TU

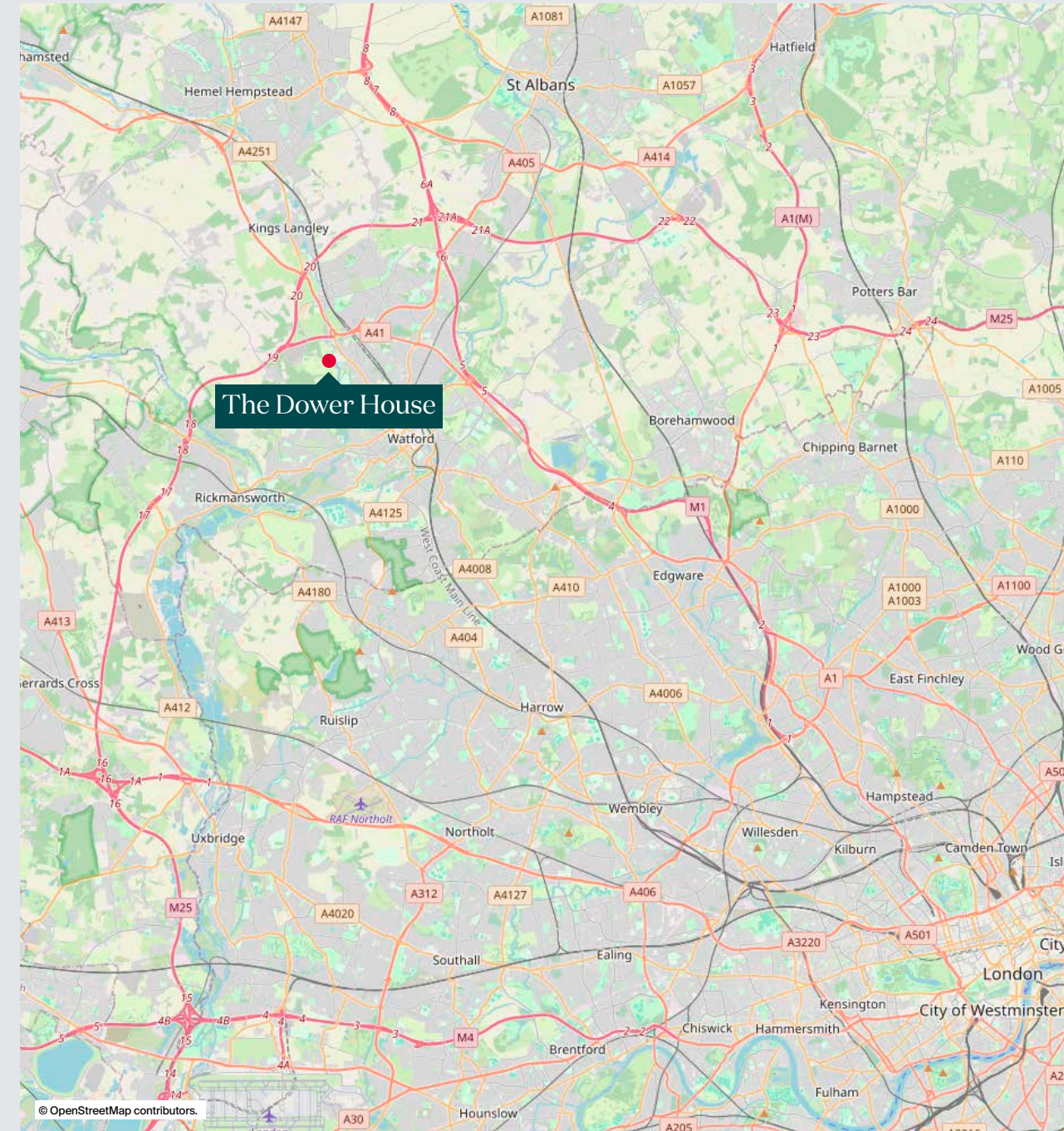
what3words:

//storm.shady.hails

Viewings:

Strictly by appointment with the joint sole selling agents

Knight Frank LLP and Savills.





Rickmansworth
11 Church Street
Rickmansworth
WD3 1BX

Steven Spencer
01923 773 171
steven.spencer@savills.com

Country Department
33 Margaret Street
London
W1G 0JD

Hugh Maconochie
020 7861 1114
hmaconochie@savills.com

savills.com



Bucks & Herts
St Marys Court
Amersham, Buckinghamshire
HP7 0UT

William Furniss
01494 675368
william.furniss@knightfrank.com

Country Department
55 Baker Street
London
W1U 8AN

Edward Welton
020 7861 1114
edward.welton@knightfrank.com

knightfrank.co.uk

Fixtures and fittings: A list of the fitted carpets, curtains, light fittings and other items fixed to the property which are included in the sale (or may be available by separate negotiation) will be provided by the Seller's Solicitors.

Important Notice: 1. Particulars: These particulars are not an offer or contract, nor part of one. You should not rely on statements by Knight Frank LLP in the particulars or by word of mouth or in writing ("information") as being factually accurate about the property, its condition or its value. Neither Knight Frank LLP nor any joint agent has any authority to make any representations about the property, and accordingly any information given is entirely without responsibility on the part of the agents, seller(s) or lessor(s). 2. Photos, Videos etc: The photographs, property videos and virtual viewings etc. show only certain parts of the property as they appeared at the time they were taken. Areas, measurements and distances given are approximate only. 3. Regulations etc: Any reference to alterations to, or use of, any part of the property does not mean that any necessary planning, building regulations or other consent has been obtained. A buyer or lessee must find out by inspection or in other ways that these matters have been properly dealt with and that all information is correct. 4. VAT: The VAT position relating to the property may change without notice. 5. To find out how we process Personal Data, please refer to our Group Privacy Statement and other notices at <https://www.knightfrank.com/legals/privacy-statement>. Particulars dated March 2025. Photographs and videos dated April and May 2024.

All information is correct at the time of going to print. Knight Frank is the trading name of Knight Frank LLP. Knight Frank LLP is a limited liability partnership registered in England and Wales with registered number OC305934. Our registered office is at 55 Baker Street, London W1U 8AN. We use the term 'partner' to refer to a member of Knight Frank LLP, or an employee or consultant. A list of members names of Knight Frank LLP may be inspected at our registered office. If you do not want us to contact you further about our services then please contact us by either calling 020 3544 0692, email to marketing.help@knightfrank.com or post to our UK Residential Marketing Manager at our registered office (above) providing your name and address.