



## BEECH RISE

St George's Hill, Weybridge, Surrey





# A LUXURIOUS FIVE BEDROOM FAMILY HOME FOR SALE ON ST. GEORGE’S HILL.

## Summary of accommodation

**Lower Ground Floor:** Pool room | Gym | Sauna | Steam room | Changing room | Wine store | Bar | Cinema | Plant room | Two WCs  
Staff accommodation including living room, two bedrooms, kitchen, bathroom, laundry room, courtyard

**Ground Floor:** Entrance hall | Dining hall | Drawing room | Study | WC | Kitchen/breakfast room | Utility | Family room | Walk in pantry | Garage

**First Floor:** Principal bedroom with dual dressing rooms and en suite shower rooms  
Four further bedrooms with en suite shower rooms (two with additional baths)

Lift to all floors

In all 1.04 acres

**Distances:** Weybridge 3 miles, Heathrow 13 miles, M25 (J10) 4 miles, Central London 24 miles  
(All distances are approximate)





## DESCRIPTION

This fabulous new residence of grand proportions extends to approximately 12,712 sq. ft. and has been built to the highest future proof specification by Consero London. This exceptional home features many bespoke finishes throughout. The property is cleverly arranged over three floors from the spacious galleried reception hall to the beautifully fitted Valcucine kitchen and utility room with Miele/Gaggenau appliances, this superb property exudes style and quality.

The reception rooms are spacious and well arranged for entertaining on a grand scale as well as being equally well suited for family living, the feeling of luxury continues through to the first floor including the spacious principal bedroom suite which has two dressing rooms along with two bathrooms. On this level there are four further bedroom suites all beautifully appointed. A particular feature of the property is the lower ground floor.

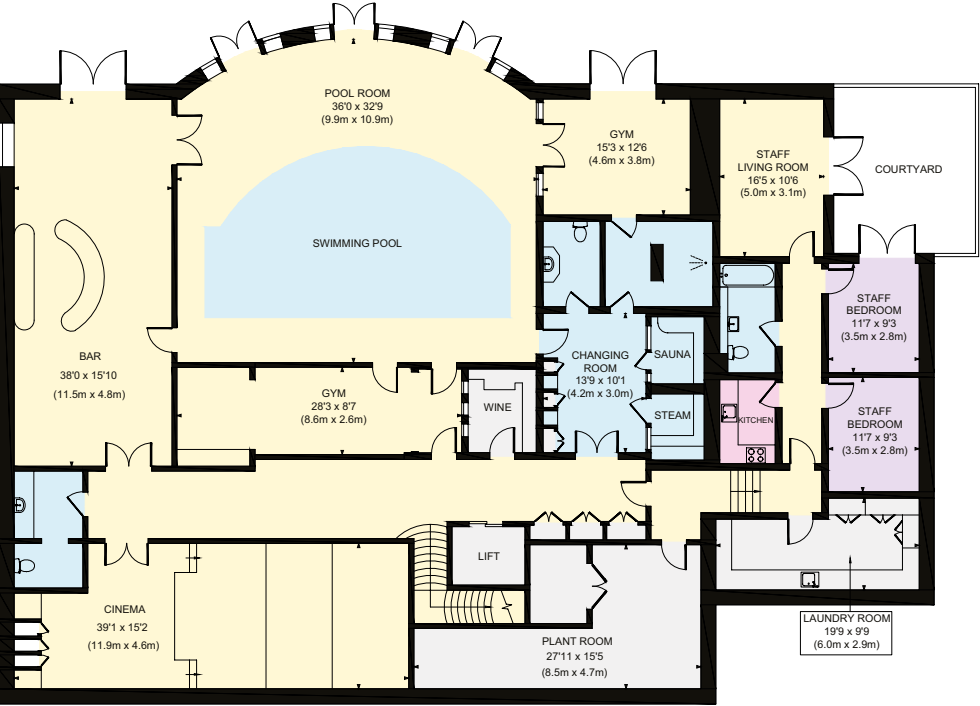






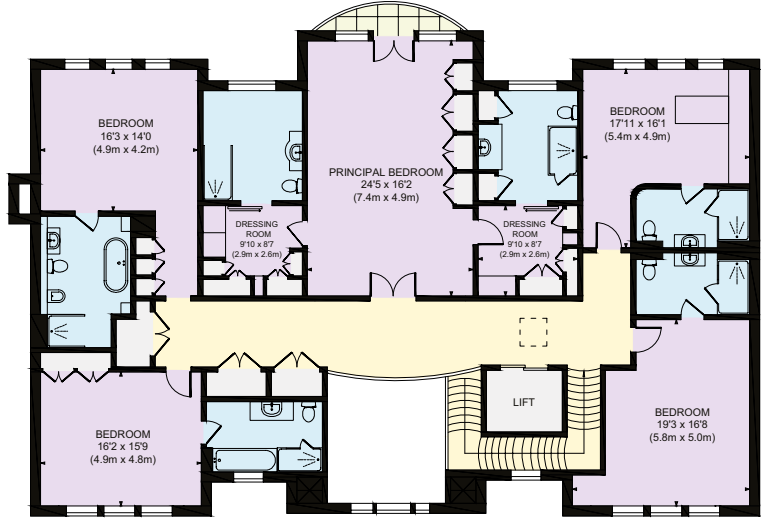


- Reception
- Bedroom
- Bathroom
- Kitchen/Utility
- Storage
- Outside

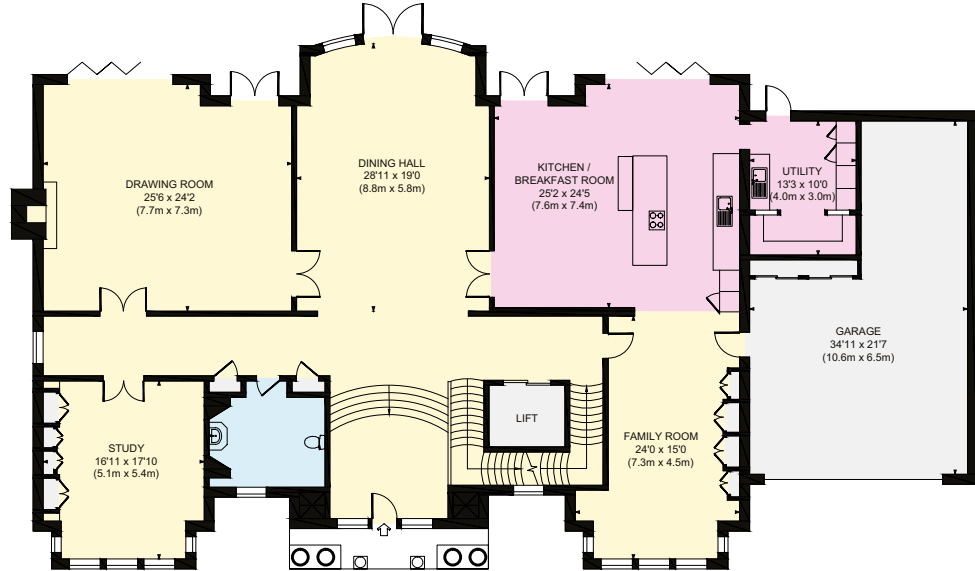


Lower Ground Floor

Approximate Gross Internal Area  
11731 Sq.Ft / 1089.81 Sq.M



First Floor

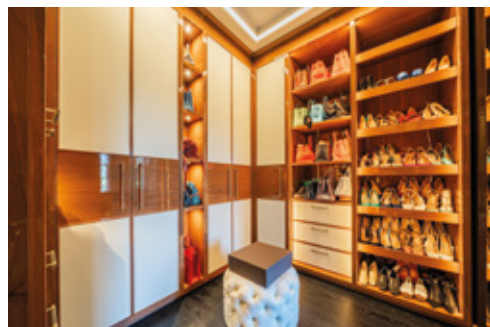


Ground Floor

This plan is for layout guidance only. Not drawn to scale unless stated. Windows and door openings are approximate. Whilst every care is taken in the preparation of this plan, please check all dimensions, shapes and compass bearings before making any decisions reliant upon them.













Positioned on this level is the stunning spa complex with indoor pool, gymnasium, changing facilities, spa bath, sauna and steam. Also on this level there is a large games/club room, fully equipped cinema with bar area, walk-in airconditioned wine cellar and two bedroom staff apartment. Combining all of these features, technologies and high quality materials, this is a truly magnificent home.

## LOCATION

St George’s Hill is set on approximately 900 acres and features a private championship-standard 18-hole golf course, 9-hole course and a separate private tennis and squash club. Close to the centre of Weybridge, the greens and fairways of St George’s Hill Golf Club meander through the Estate, whilst the Lawn Tennis, Squash and Croquet Club offers luxurious fitness and an indoor swimming pool. The Estate provides controlled gated security and privacy, offering an ideal community location. The A3 is a short driving distance giving access to London and the M25 which, in turn, leads to the national motorway network as well as Heathrow and Gatwick airports. Weybridge and Walton mainline rail stations are conveniently located nearby.

## PROPERTY INFORMATION

**Tenure:** Freehold

**Local Authority:** Elmbridge Borough Council

**Council Tax:** Band H

**EPC:** C





We would be delighted  
to tell you more.

**Matthew Scott**  
01932 548001  
matthew.scott@knightfrank.com

**Knight Frank Weybridge**  
20 High Street, Weybridge  
KT13 8AB

**Stuart Cole**  
020 7861 5101  
stuart.cole@knightfrank.com

**Knight Frank Country Department**  
55 Baker Street, London  
W1U 8AN

**knightfrank.co.uk**

**Your partners in property**

1. Particulars: These particulars are not an offer or contract, nor part of one. You should not rely on statements given by Knight Frank in the particulars, by word of mouth or in writing ("information") as being factually accurate about the property, its condition or its value. Neither Knight Frank nor any joint agent has any authority to make any representations about the property, and accordingly any information given is entirely without responsibility on the part of Knight Frank. 2. Material Information: Please note that the material information is provided to Knight Frank by third parties and is provided here as a guide only. While Knight Frank has taken steps to verify this information, we advise you to confirm the details of any such material information prior to any offer being submitted. If we are informed of changes to this information by the seller or another third party, we will use reasonable endeavours to update this as soon as practical. 3. Photos, Videos etc: The photographs, property videos and virtual viewings etc. show only certain parts of the property as they appeared at the time they were taken. Areas, measurements and distances given are approximate only. 4. Regulations etc: Any reference to alterations to, or use of, any part of the property does not mean that any necessary planning, building regulations or other consent has been obtained. A buyer must find out by inspection or in other ways that these matters have been properly dealt with and that all information is correct. 5. Fixtures and fittings: A list of the fitted carpets, curtains, light fittings and other items fixed to the property which are included in the sale (or may be available by separate negotiation) will be provided by the Seller's Solicitors. 6. VAT: The VAT position relating to the property may change without notice. 7. To find out how we process Personal Data, please refer to our Group Privacy Statement and other notices at <https://www.knightfrank.com/legals/privacy-statement>.

Particulars dated September 2025. Photographs and videos dated August 2025. All information is correct at the time of going to print. Knight Frank is the trading name of Knight Frank LLP. Knight Frank LLP is a limited liability partnership registered in England and Wales with registered number OC305934. Our registered office is at 55 Baker Street, London W1U 8AN. We use the term 'partner' to refer to a member of Knight Frank LLP, or an employee or consultant. A list of members names of Knight Frank LLP may be inspected at our registered office. If you do not want us to contact you further about our services then please contact us by either calling 020 3544 0692, email to [marketing.help@knightfrank.com](mailto:marketing.help@knightfrank.com) or post to our UK Residential Marketing Manager at our registered office (above) providing your name and address.