



EVENDINE COURT

Evendine, Worcestershire



AN IMMACULATE ARTS AND CRAFTS HOME, IN A TRANQUIL SETTING ON THE SLOPES OF THE MALVERN HILLS.

Summary of accommodation

The Court

Reception hall | Impressive double height drawing room | Dining room/snooker room | Sitting room | Family room | Study
Kitchen/breakfast room | Utility room | Boot room | Pantry | Cellar | Two cloakrooms

Principal bedroom with dressing room and bathroom | Guest bedroom with dressing room and bathroom
Four/five further bedrooms | Two further bathrooms

First Floor apartment

Separate access via external staircase or internally from the ground floor via a lift
Sitting/dining room | Kitchen | Bedroom | Dressing room | Bathroom

Outside

Landscaped gardens | Terraces and grounds with ornamental lake | Grassland paddock and fields

In all about 4.5 acres

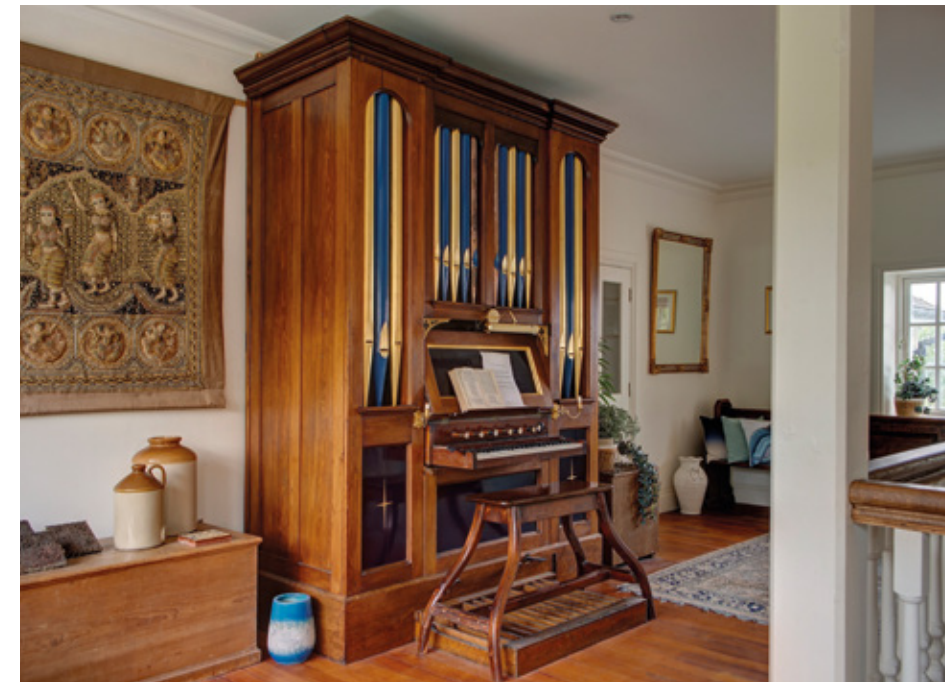


THE PROPERTY

Evendine Court is nestled in a tranquil setting on the western side of the Malvern Hills, an Area of Outstanding Natural Beauty. Built in 1902 in the Arts and Crafts style, the property was originally designed to emulate a classic

Victorian country house and served as a finishing school for young ladies to learn the art of managing such an estate.

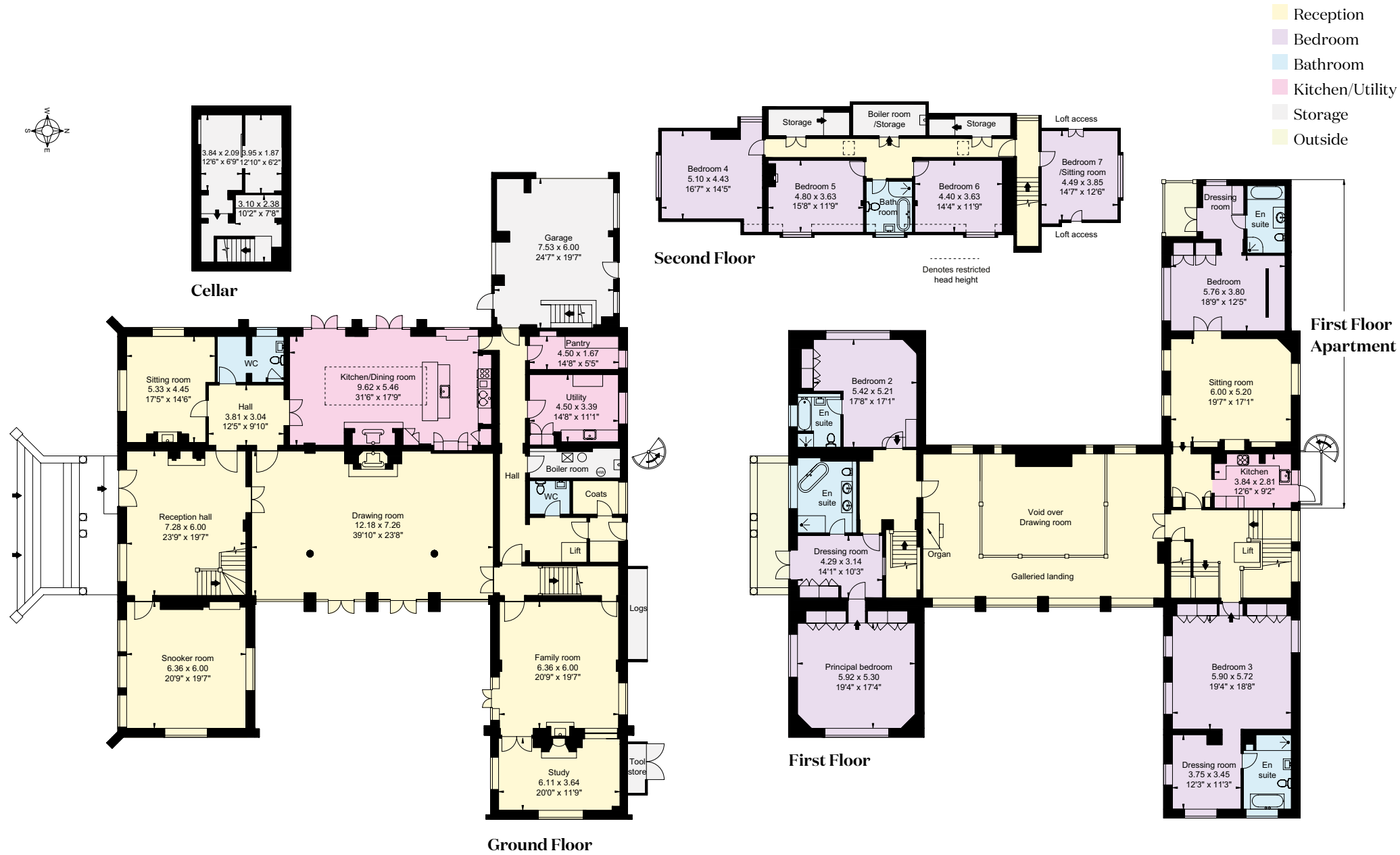
The current owners acquired the house approximately 15 years ago and embarked on an extensive restoration programme. Great care was taken to preserve and enhance the original architectural features while introducing exquisite interiors that celebrate the elegance of the period.











This plan is for layout guidance only. Not drawn to scale unless stated. Windows and door openings are approximate. Whilst every care is taken in the preparation of this plan, please check all dimensions, shapes and compass bearings before making any decisions reliant upon them.



Significant attention has also been devoted to the gardens and grounds. Beautiful sun terraces have been created to capture sunlight at various times of day, while thoughtfully planned vistas from the house overlook meticulously landscaped grounds. Enhancements include parkland fencing, tree planting, a water rill, and an ornamental lake, all contributing to the serene and picturesque setting.



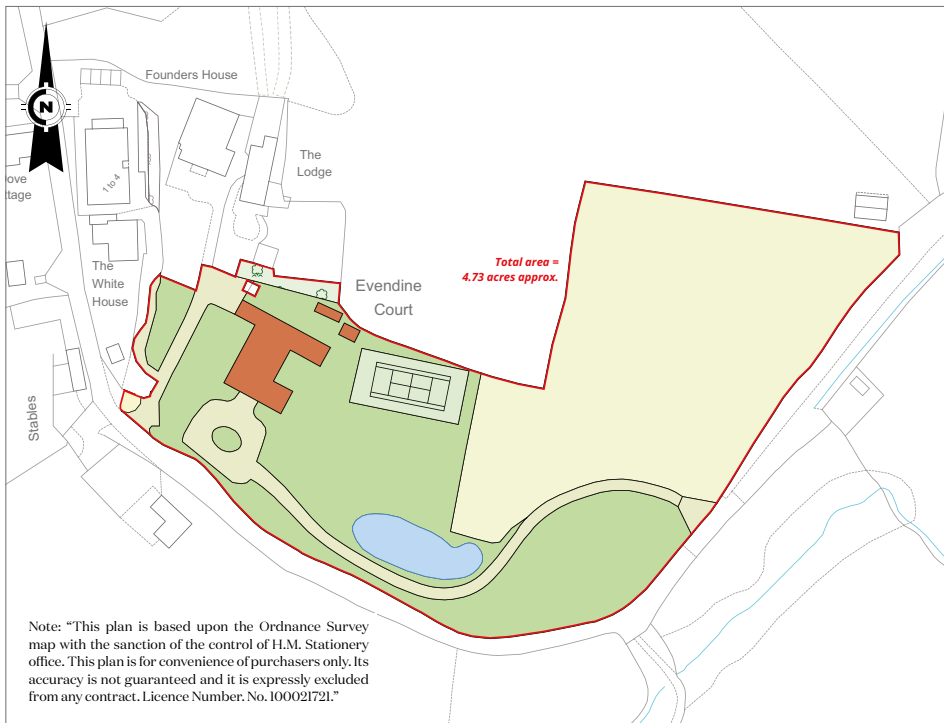


LOCATION

Evendine Court lies within the small and picturesque hamlet of Evendine, part of the parish of Colwall on the Herefordshire–Worcestershire border. Occupying a glorious, elevated position in the lea of the Malvern Hills.

The nearby village of Colwall caters to most day-to-day needs including a village shop and pharmacy, while the towns of Malvern and Ledbury about 4 miles away, offer a wider range of amenities.

Communications are excellent, with larger centres such as Cheltenham (26 miles), Worcester (12 miles), and London (145 miles) within easy reach. Regular train services to London Paddington are available from Malvern, with a journey time of approximately 2 hours and 30 minutes.



PROPERTY INFORMATION

Services: Underfloor heating via ground source heat pump. Mains gas radiator central heating. Solar panels (4kW). Shared private drainage.

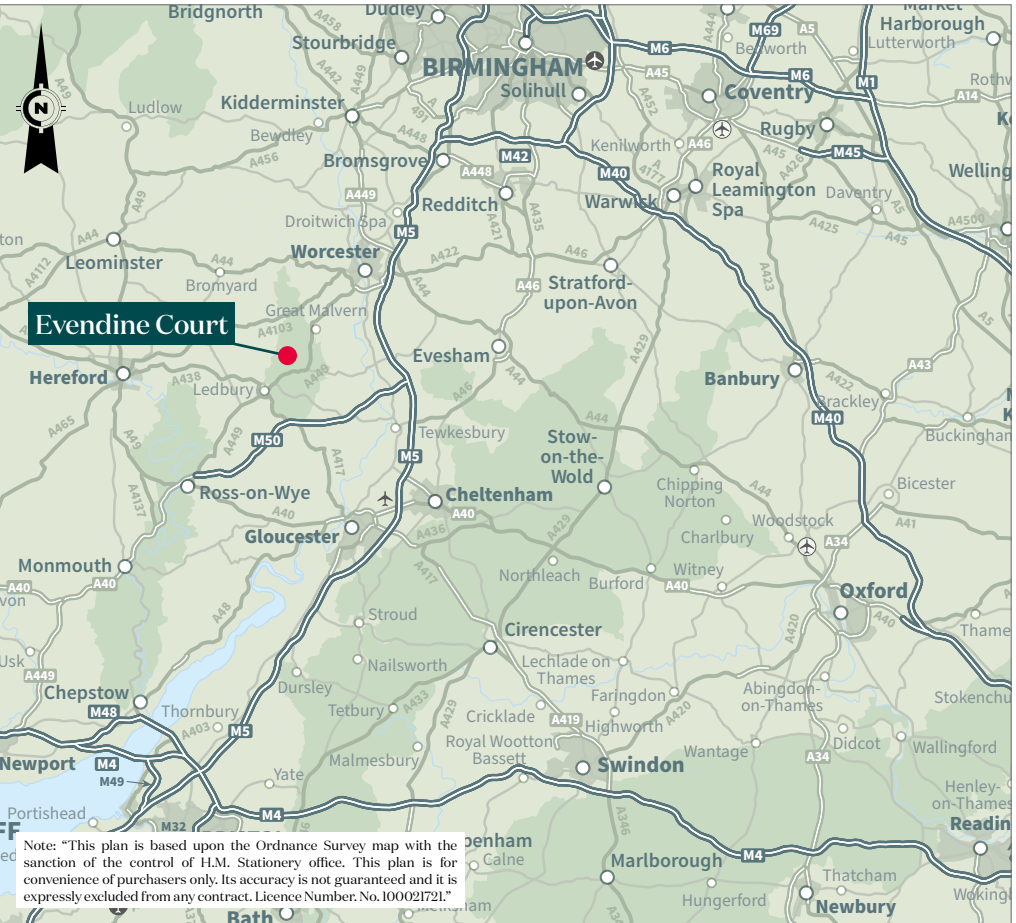
Local Authority: Herefordshire Council

Council Tax: House - Band G, Apartment - Band A

EPC Ratings: House - C, Apartment - C

Tenure: Freehold

Directions: what3words [///prepared.ridge.indulges](#) or WR13 6DP



We would be delighted
to tell you more.

Charles Probert
01905 746884
charles.probert@knightfrank.com

Knight Frank Worcester
Kingsway House, Worcester
WR1 1EE

Christopher Dewe
020 7861 1779
christopher.dewe@knightfrank.com

Charlotte Hall
020 3866 7826
charlotte.hall@knightfrank.com

Knight Frank Country Department
55 Baker Street, London
W1U 8AN

[knightfrank.co.uk](https://www.knightfrank.co.uk)

Your partners in property

Important Notice 1. Particulars: These particulars are not an offer or contract, nor part of one. You should not rely on statements given by KF West Midlands Ltd., in the particulars, by word of mouth or in writing ("information") as being factually accurate about the property, its condition or its value. Neither KF West Midlands Ltd, nor any joint agent has any authority to make any representations about the property, and accordingly any information given is entirely without responsibility on the part of KF West Midlands Ltd. 2. Material Information: Please note that the material information is provided to KF West Midlands Ltd, by third parties and is provided here as a guide only. While KF West Midlands Ltd, has taken steps to verify this information, we advise you to confirm the details of any such material information prior to any offer being submitted. If we are informed of changes to this information by the seller or another third party, we will use reasonable endeavours to update this as soon as practical. 3. Photos, Videos etc: The photographs, property videos and virtual viewings etc. show only certain parts of the property as they appeared at the time they were taken. Areas, measurements and distances given are approximate only. 4. Regulations etc: Any reference to alterations to, or use of, any part of the property does not mean that any necessary planning, building regulations or other consent has been obtained. A buyer must find out by inspection or in other ways that these matters have been properly dealt with and that all information is correct. 5. Fixtures and fittings: A list of the fitted carpets, curtains, light fittings and other items fixed to the property which are included in the sale (or may be available by separate negotiation) will be provided by the Seller's Solicitors. 6. VAT: The VAT position relating to the property may change without notice. 7. To find out how we process Personal Data, please refer to our Group Privacy Statement and other notices at <https://www.knightfrank.com/legals/privacy-statement>.

Particulars dated May 2025. Photographs and videos dated May 2025. All information is correct at the time of going to print. KF West Midlands Limited, a company registered in England and Wales with registered number 13144773. Our registered office is at 9 College Hill, Shrewsbury, Shropshire, SY1 1LZ. KF West Midlands Limited is an independently owned member of the Knight Frank Network operating under licence from Knight Frank LLP. Brochure by wordperfectprint.com