

Park House

Wentworth, Surrey





A luxury five bedroom house for sale on the Wentworth Estate

Virginia Water 0.3 miles, M3 3 miles, Ascot 3.5 miles, M4 (J4b) 7 miles
M25 (J13) 8 miles, Heathrow Airport 15 miles, Central London 28 miles
(All distances are approximate)


6


7


5

Summary of accommodation

Ground Floor: Entrance hall | Drawing room | Dining room | Family room | Study | Kitchen/breakfast room/orangery | Utility | Three WC's

Garage | Plant room

First Floor: Galleried landing | Principal bedroom suite | Three further bedroom suites

Annexe with living room | kitchenette | Bedroom | Bathroom

Second Floor: Fifth bedroom suite | Family bathroom | Games room | Cinema

Park House

Park House is a stunning, light-filled residence located on the sought-after Gorse Hill Road in Wentworth. Built in 2012 by Citigate Homes, this exceptional property spans approximately 8,428 square feet of luxurious accommodation, arranged over three spacious floors. Designed for modern living, Park House combines elegance, comfort, and contemporary style, with air conditioning throughout ensuring year-round comfort.

As you enter the property, a grand galleried entrance hall welcomes you, setting the tone for the rest of the home. The ground floor offers a selection of beautifully proportioned reception rooms, most of which enjoy views over the rear garden, creating a seamless connection between indoor and outdoor living. The family kitchen is both spacious and inviting, making it perfect for everyday family life as well as entertaining.







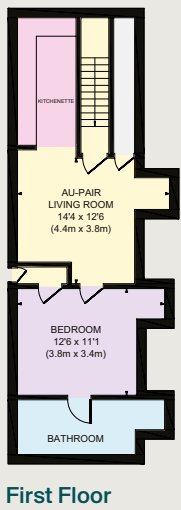
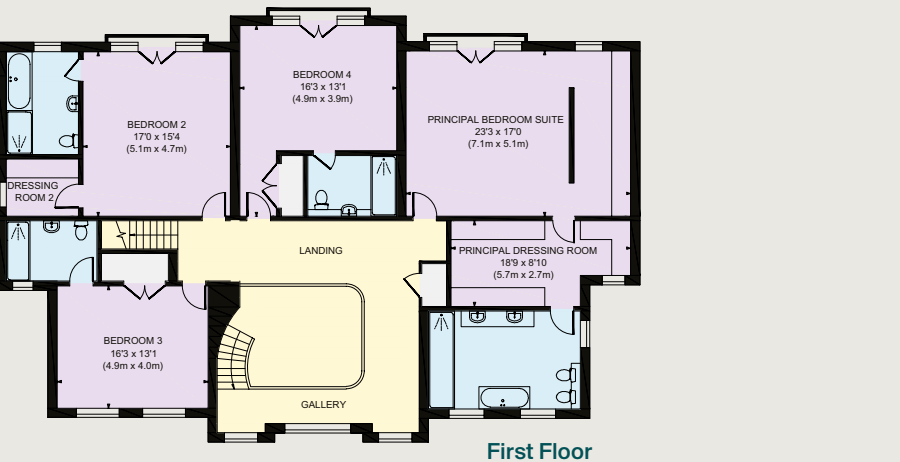
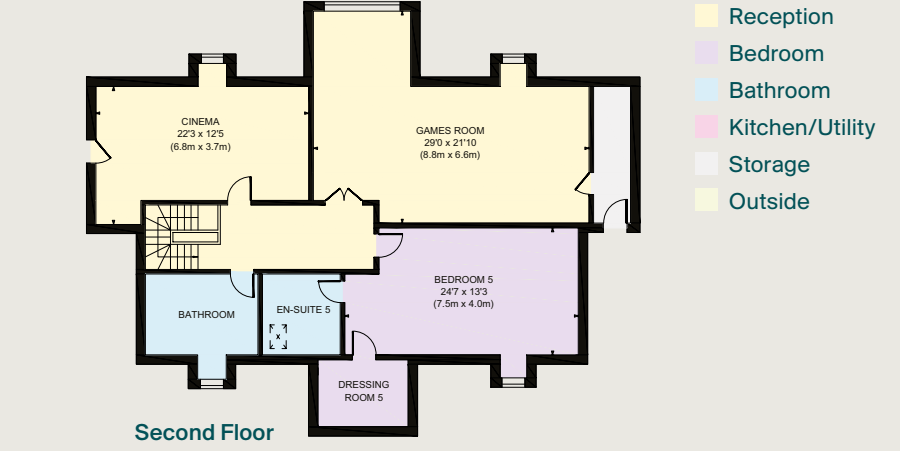
On the first floor, the principal bedroom suite offers a private sanctuary, complete with separate “his and hers” dressing rooms and an expansive en suite bathroom. Three further bedrooms, each with its own en suite bathroom, provide ample space and privacy for family members or guests.

The second floor is dedicated to leisure and entertainment, featuring a fifth bedroom suite with a dressing room and en suite, as well as a fully-equipped cinema room, a large games room, and a separate WC, perfect for family fun and relaxation.





Approximate Gross Internal Floor Area
8428 sq. ft / 783.00 sq. m



This plan is for guidance only and must not be relied upon as a statement of fact. Attention is drawn to the Important Notice on the last page of the text of the Particulars.

Gardens and grounds

Externally, the property boasts a well-maintained garden predominantly laid to lawn with mature trees and shrubs, providing a peaceful, private retreat. A large terrace spans the rear of the house, ideal for outdoor dining or simply enjoying the tranquil surroundings. The front of the property is equally impressive, with a sweeping driveway offering ample private parking and access to the integral triple garage. Above the garage, a one-bedroom annexe provides versatile accommodation for staff, guests, or extended family. Park House is a rare opportunity to acquire a spacious, beautifully appointed home in one of Wentworth's most prestigious locations, offering the perfect blend of luxury, practicality, and privacy.





Property Information

Tenure

Freehold

Local Authority

Runnymede Borough Council

Council Tax

Band H

EPC Rating

C

Directions

Postcode: GU25 4AS

What3words: ///

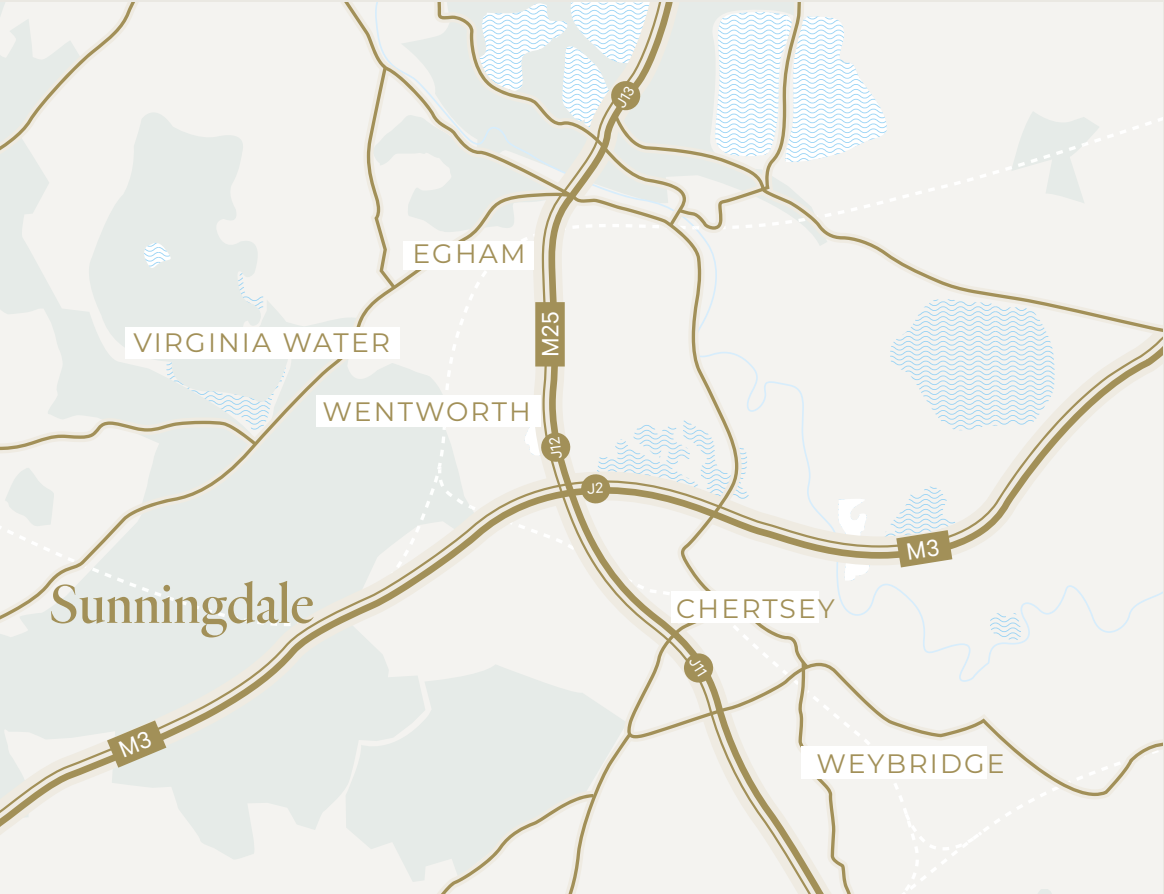
Viewings

Viewing is strictly by appointment through Knight Frank.



Situation

Park House is positioned on the prestigious Wentworth Estate, which extends to approximately 1,750 acres lying within the Green Belt. Its history dates back to the early 1920s when the visionary developer, W G Tarrant purchased an agricultural estate around which he created his rural dream of substantial mansion houses set in beautiful mature gardens surrounding a golf course. Today there are three 18-hole championship golf courses and a 9-hole executive course. In addition there is the Wentworth Club with swimming pools, restaurants, tennis courts and a health and leisure club.





Knight Frank Ascot & Virginia Water

59 High Street

Ascot

SL5 7HP

Edward Shaw

01344 293140

edward.shaw@knightfrank.com

Knight Frank Country Department

55 Baker Street

London

W1U 8AN

George Pratt

020 7861 1166

george.pratt@knightfrank.com

[knightfrank.co.uk](https://www.knightfrank.co.uk)

Important Notice: 1. Particulars: These particulars are not an offer or contract, nor part of one. You should not rely on statements given by Knight Frank in the particulars, by word of mouth or in writing ("information") as being factually accurate about the property, its condition or its value. Neither Knight Frank nor any joint agent has any authority to make any representations about the property, and accordingly any information given is entirely without responsibility on the part of Knight Frank. 2. Material Information: Please note that the material information is provided to Knight Frank by third parties and is provided here as a guide only. While Knight Frank has taken steps to verify this information, we advise you to confirm the details of any such material information prior to any offer being submitted. If we are informed of changes to this information by the seller or another third party, we will use reasonable endeavours to update this as soon as practical. 3. Photos, Videos etc: The photographs, property videos and virtual viewings etc. show only certain parts of the property as they appeared at the time they were taken. Areas, measurements and distances given are approximate only. 4. Regulations etc: Any reference to alterations to, or use of, any part of the property does not mean that any necessary planning, building regulations or other consent has been obtained. A buyer must find out by inspection or in other ways that these matters have been properly dealt with and that all information is correct. 5. Fixtures and fittings: A list of the fitted carpets, curtains, light fittings and other items fixed to the property which are included in the sale (or may be available by separate negotiation) will be provided by the Seller's Solicitors. 6. VAT: The VAT position relating to the property may change without notice. 7. To find out how we process Personal Data, please refer to our Group Privacy Statement and other notices at <https://www.knightfrank.com/legals/privacy-statement>.

Particulars dated May 2025. Photographs and videos dated April 2025. All information is correct at the time of going to print. Knight Frank is the trading name of Knight Frank LLP. Knight Frank LLP is a limited liability partnership registered in England and Wales with registered number OC305934. Our registered office is at 55 Baker Street, London W1U 8AN. We use the term 'partner' to refer to a member of Knight Frank LLP, or an employee or consultant. A list of members names of Knight Frank LLP may be inspected at our registered office. If you do not want us to contact you further about our services then please contact us by either calling 020 3544 0692, email to marketing.help@knightfrank.com or post to our UK Residential Marketing Manager at our registered office (above) providing your name and address. Brochure by [wordperfectprint.com](https://www.wordperfectprint.com)